

# TROYER AVENUE LIFT STATION REPLACEMENT

## TOWN OF PALISADE

June 2024

BID SET

### AGENCY CONTACTS

TOWN OF PALISADE – MATT BEEHLER, PUBLIC WORKS	970–464–5602 o. mbeehler@townofpalisade.org
J–U–B ENGINEERS – MATT FILLA, PROJECT ENGINEER	307–343–3440 m. mfilla@jub.com
XCEL – MIKE CASTRO, ELECTRICAL ENGINEER	970–244–2781 o. michael.a.castro@xcelenergy.com
CHARTER – JEFF VALDEZ, DESIGN ENGINEER	970–210–2550 o. jeff.valdez@charter.com
CLEARNETWORKX – SHAUNA LOCKWOOD, PROJECTS COORDINATOR	970–249–8848 shauna@deeplydigital.com

Sheet List Table	
Sheet Number	Sheet Title
G–001	GENERAL
G–002	GENERAL NOTES
G–003	LINE LEGEND AND DETAIL KEY
G–004	SYMBOL LEGEND AND ABBREVIATIONS
V–101	SURVEY CONTROL
C–101	PLAN AND PROFILE
C–102	PLAN AND PROFILE
C–501	DETAILS
C–502	DETAILS
C–503	DETAILS
M–501	LIFT STATION
M–502	LIFT STATION
M–503	LIFT STATION
E0–1	ELECTRICAL
E1–1	ELECTRICAL
E2–1	ELECTRICAL

PROJECT NO. 81-23-003



J-U-B ENGINEERS, INC.

305 Main Street, Palisade, CO 81526  
p 970 208 8508 w www.jub.com



THE  
LANGDON  
GROUP



GATEWAY  
MAPPING  
INC.

J-U-B FAMILY OF COMPANIES



### REUSE OF DOCUMENTS

J-U-B grants to CLIENT a nonexclusive, non-transferable license to use the Drawings, Specifications and/or Contract Documents (Documents) as follows:

CLIENT may make and retain copies of the Documents for reference, but J-U-B shall retain all common law, statutory and other reserved rights, including the copyright thereto, and the same shall not be reused on this Project or any other Project without J-U-B's prior written consent. Distribution of Documents to meet regulatory or permitting requirements, or for similar purposes, in connection with the Project, including but not limited to distribution to contractors or subcontractors for the performance of their work, is not to be construed as publication adversely affecting the reserved rights of J-U-B. The Documents are not intended for use in creating dtm for grading or earthwork, survey staking layout (unless specifically identified as such in the documents), or property boundary layouts.

Any reuse without written consent by J-U-B, or without verification or adoption by J-U-B for the specific purpose intended by the reuse, will be at CLIENT's sole risk and without liability or legal exposure to J-U-B. The CLIENT shall release, defend, indemnify, and hold J-U-B harmless from any claims, damages, actions or causes of action, losses, and expenses, including reasonable attorneys' and expert fees, arising out of or resulting from such reuse.

If the Documents are provided in electronic format, the electronic documents are subject to the provisions of J-U-B's "electronic document/data limited license" found at edocs.jub.com

LAST UPDATED: 6/17/2024

SHEET NUMBER:

G-001



AREA MAP

Plot Date: 9/19/2024 3:27 PM Plotted By: Matt Filla  
Date Created: 9/17/2024 10:11:41 AM Project: JUB TOWN OF PALISADE 18-003 TOWN ENGINEER: TROYER LIFT STATION DESIGN: GAD SHEET 01-23-003 G-002.DWG

GENERAL NOTES

1.

THE TOWN OF PALISADE AND THE ENGINEER HAVE JURISDICTION OVER THIS PROJECT. CONTRACTOR SHALL OBTAIN ALL NECESSARY PERMITS AND BUSINESS LICENSES PRIOR TO CONSTRUCTION.
2.

CONTRACTOR IS RESPONSIBLE FOR DUST ABATEMENT AND ANY LIABILITY ISSUES RELATED TO DUST AT ANY LOCATION WHICH MAY BE CAUSED BY THIS PROJECT.
3.

THE CONTRACTOR IS RESPONSIBLE FOR TRAFFIC CONTROL AND PROTECTION OF PEDESTRIANS IN AND AROUND THIS WORK. ALL TRAFFIC CONTROL, BARRICADES, ETC., SHALL BE IN ACCORDANCE WITH THE MANUAL ON UNIFORM TRAFFIC CONTROL DEVICES.
4.

ANY WORK DONE WITHIN A PUBLIC RIGHT-OF-WAY SHALL BE COORDINATED WITH THE APPROPRIATE TRANSPORTATION AGENCY AND SHALL MEET THE REQUIREMENTS OF THAT AGENCY AND, IN PARTICULAR, REQUIREMENTS OF ANY RIGHT-OF-WAY SPECIAL USE PERMIT, OR OTHER PERMIT. ALL WORK SHALL MEET CURRENT OSHA REQUIREMENTS.
5.

WHERE WORK IS PERFORMED ON EASEMENTS, THE CONTRACTOR SHALL TAKE EVERY PRECAUTION TO ELIMINATE ANY ADVERSE EFFECTS ON THE ADJACENT PROPERTY AND/OR TO RESTORE IT TO ITS ORIGINAL CONDITION.
6.

ALL DISTANCES AND DATA SHALL BE CHECKED BY THE CONTRACTOR PRIOR TO THE START OF CONSTRUCTION. IN CASE OF CONFLICT THE ENGINEER SHALL BE NOTIFIED IMMEDIATELY SO THAT CLARIFICATION MAY BE MADE PRIOR TO THE START OF THE WORK.
7.

THE CONTRACTOR SHALL ARRANGE FOR, SECURE AND PAY FOR DIRECTLY, ANY AND ALL TEMPORARY UTILITY SUPPLIES (E.G. WATER POWER, AND TELEPHONE) IT MAY REQUIRE FOR PROSECUTION OF ITS WORK. THE COST OF SUCH UTILITIES SHALL BE INCLUDED IN THE APPROPRIATE BID ITEM WITH WHICH IT IS ASSOCIATED.
8.

SHOULD CONSTRUCTION BE HALTED BECAUSE OF INCLEMENT WEATHER CONDITIONS, THE CONTRACTOR WILL COMPLETELY CLEAN UP ALL AREAS AND MAINTAIN THE SURFACE IN GOOD CONDITION DURING THE SHUT-DOWN PERIOD.
9.

THE CONTRACTOR’S PERSONNEL, EQUIPMENT, AND OPERATIONS SHALL COMPLY FULLY WITH ALL APPLICABLE STANDARDS, REGULATIONS, AND REQUIREMENTS OF EXISTING FEDERAL, COLORADO STATE, AND LOCAL GOVERNMENTAL AGENCIES.
10.

THE CONTRACTOR SHALL BE RESPONSIBLE FOR OBTAINING ALL LOCAL, STATE, AND FEDERAL PERMITS REQUIRED FOR STORMWATER POLLUTION PREVENTION AS A RESULT OF CONSTRUCTION ACTIVITIES. THE CONTRACTOR SHALL PREPARE A STORMWATER POLLUTION PREVENTION PLAN FOR APPROVAL BY THE ENGINEER. IF THE CONSTRUCTION WILL DISTURB MORE THAN ONE ACRE, THE CONTRACTOR SHALL OBTAIN A COPY OF THE U.S. ENVIRONMENTAL PROTECTION AGENCY’S NPDES GENERAL PERMIT FOR STORM WATER DISCHARGES ASSOCIATED WITH CONSTRUCTION ACTIVITY (OTHERWISE KNOWN AS THE CONSTRUCTION GENERAL PERMIT OR CGP) AND SUBMIT A “NOTICE OF INTENT” (NOI)[EPA FORM 3510-9 (6/03)] FOR PERMIT COVERAGE UNDER THE GENERAL PERMIT. THE CGP MAY BE FOUND ON THE INTERNET AT [<HTTP://WWW.EPA.GOV/NPDES/STORMWATER/CGP>](http://www.epa.gov/npdes/stormwater/cgp) OR BY CONTACTING THE U.S. EPA OFFICE OF WATER DIRECTLY AT (800) 424-4372. THE NOI MAY BE FILED ELECTRONICALLY AT THE FOLLOWING WEBSITE: [<HTTP://CFPUB.EPA.GOV/NPDES/STORMWATER/ENOI.CFM>](http://cfpub.epa.gov/npdes/stormwater/enoi.cfm). THE CGP DOES NOT RELIEVE THE CONTRACTOR FROM COMPLIANCE WITH OTHER REGULATIONS OR CONTRACT REQUIREMENTS REGARDING STORMWATER POLLUTION PREVENTION INCLUDING BUT NOT LIMITED TO: PROTECTION OF SURFACE WATERS, PREVENTION OF SOIL RUNOFF INTO DRAINS, DUST CONTROL, PREVENTION OF TRACKING SOILS TO ADJACENT STREETS, FUEL CONTAINMENT, SPILL CONTROL, ETC.
11.

ALL WORK SHALL BE CONTAINED IN OR LIMITED TO THE TOWN’S PROPERTY, EASEMENTS, OR APPROVED STAGING AREAS.
12.

CONTRACTOR TO PROVIDE, CONSTRUCT, MAINTAIN AND REMOVE A TEMPORARY FENCE AROUND THE CONSTRUCTION SITE USED TO PROTECT NEIGHBORING PROPERTIES FROM DAMAGE. CONTRACTOR IS ALSO RESPONSIBLE FOR PROTECTION TO SAFE GUARD WORK SITE. PAY ITEM TO BE INCLUDED IN MOBILIZATION.
13.

THE ENGINEER HAS PROVIDED VERTICAL AND HORIZONTAL CONTROLS ON THE PROJECT SITE. ANY ADDITIONAL CONSTRUCTION STAKING REQUIRED TO COMPLETE THE PROJECT SHALL BE THE RESPONSIBILITY OF THE CONTRACTOR.

14.

CONTRACTOR SHALL LOCATE AND PROTECT ALL EXISTING UTILITIES AND BE RESPONSIBLE FOR DAMAGES TO EXISTING UTILITIES AND EXISTING IMPROVEMENTS AS A RESULT OF THE CONTRACTOR’S CONSTRUCTION ACTIVITIES.
15.

SURVEY MARKERS AND LOT PINS (NOT SHOWN ON THE PLANS) SHALL BE PROTECTED. IF DISTURBED, THEY SHALL BE RESET BY A LICENSED SURVEYOR AT THE CONTRACTOR’S EXPENSE.
16.

THE CONTRACTOR SHALL PROVIDE A SANITARY FACILITY AT THE JOB SITE.
17.

EXCESS EXCAVATED MATERIALS, ASPHALT, AND CONCRETE SHALL BECOME THE PROPERTY OF THE CONTRACTOR, WHO IS RESPONSIBLE FOR DISPOSAL AT LOCATIONS APPROVED OF BY THE ENGINEER.
18.

SEE SPECIFICATIONS FOR ADDITIONAL INFORMATION REGARDING CONCRETE MATERIAL, PLACEMENT, TEMPERATURE, CONSIDERATIONS, JOINTS, SEALING, ETC.
19.

LANDSCAPE RESTORATION NOT LISTED IN THE BID SCHEDULE SHALL BE CONSIDERED INCIDENTAL TO OTHER ITEMS OF WORK AND WILL NOT BE PAID FOR SEPARATELY.
20.

ALL MATERIALS AND WORKMANSHIP SHALL BE SUBJECT TO INSPECTION BY THE TOWN OF PALISADE. THE TOWN RESERVES THE RIGHT TO ACCEPT OR REJECT ANY MATERIALS AND WORKMANSHIP THAT DOES NOT CONFORM TO THE STANDARDS AND SPECIFICATIONS OF THE TOWN.
21.

ALL CONSTRUCTION TO BE PERFORMED IN ACCORDANCE WITH THE CITY OF GRAND JUNCTION STANDARD CONTRACT DOCUMENTS FOR CAPITAL IMPROVEMENTS CONSTRUCTION.
22.

THE CONTRACTOR SHALL HAVE A COPY OF THE CITY OF GRAND JUNCTION STANDARD CONTRACT DOCUMENTS FOR CAPITAL IMPROVEMENT CONSTRUCTION AT THE JOB SITE AT ALL TIMES.
23.

SEWER SERVICES AND LIFT STATION SHALL REMAIN OPERATIONAL DURING CONSTRUCTION.
24.

THE CONTRACTOR SHALL PROVIDE FINAL CCTV CAMERA INSPECTION OF THE GRAVITY SEWER LINES FOR INSPECTION BY THE ENGINEER. ANY SUSPECTED SAGS, FOUND DURING LAMPING OF THE SEWER LINE, WILL BE MEASURED WITH A GRADUATED DEVICE IN FRONT OF THE CAMERA SO AS TO ELIMINATE ANY DISTORTIONS THAT MAY BE CAUSED BY THE OPTICS OF THE CAMERA. THIS WORK IS INCIDENTAL TO THE INSTALLATION OF GRAVITY SEWER LINES.

EXISTING UTILITIES

1. APPROXIMATE LOCATIONS OF UTILITIES ARE SHOWN ON THE PLANS. THEY ARE TO BE USED FOR GENERAL INFORMATION ONLY. IT IS THE RESPONSIBILITY OF THE CONTRACTOR TO NOTIFY THE APPROPRIATE UTILITY COMPANIES WHEN CONSTRUCTION MIGHT INTERFERE WITH NORMAL OPERATION OF ANY UTILITIES. IT SHALL ALSO BE THE CONTRACTOR’S RESPONSIBILITY TO HAVE THE APPROPRIATE UTILITY COMPANY FIELD-LOCATE ANY UTILITY INSTALLATIONS WHICH MIGHT BE AFFECTED BY CONSTRUCTION PRIOR TO BEGINNING WORK IN THAT AREA. THE CONTRACTOR SHALL BE RESPONSIBLE FOR MAINTAINING SERVICE OF EXISTING UTILITIES AND FOR RESTORING ANY UTILITIES DAMAGED DUE TO CONSTRUCTION AT NO ADDITIONAL COST TO THE OWNER. DEPTHS AND ELEVATIONS OF UTILITIES ARE UNKNOWN UNLESS OTHERWISE SHOWN. CONTRACTOR SHALL FIELD VERIFY UTILITY DEPTHS, ELEVATIONS, ANY DISCREPANCIES AND/OR CONFLICTS SHALL BE BROUGHT TO THE ATTENTION OF THE ENGINEER IMMEDIATELY.

INSPECTION AND TESTING

1.

THE CONTRACTOR SHALL BE RESPONSIBLE FOR MATERIALS TESTING INCLUDING BUT NOT LIMITED TO CONCRETE, FLUSHING, DISINFECTION, LEAK, PRESSURE, BACTERIOLOGICAL, AND COMPACTION. ALL TESTS SHALL MEET MINIMUM ENGINEER REQUIREMENTS. SEE THE CONTRACT DOCUMENTS AND DRAWINGS FOR FREQUENCY OF TESTING. RESULTS ARE TO BE DELIVERED TO OWNER AND ENGINEER.
2.

THE CONTRACTOR IS RESPONSIBLE TO COORDINATE WITH ENGINEER FOR INSPECTIONS OF WORK AT APPROPRIATE INTERVALS. IT SHALL BE THE CONTRACTOR’S RESPONSIBILITY TO PAY FOR ADDITIONAL INSPECTIONS THAT ARE THE RESULT OF HIS WORKMANSHIP.



Know what's below.  
Call before you dig.

CALL 2 BUSINESS DAYS IN ADVANCE BEFORE  
YOU DIG, GRADE, OR EXCAVATE FOR THE  
MARKING OF UNDERGROUND MEMBER  
UTILITIES



J-U-B ENGINEERS, INC.

J-U-B ENGINEERS, INC.  
305 S. Main Street  
Unit 6  
Palisade, CO 81526  
Phone: 970.208.8508  
www.jub.com

BID SET

JUB SHALL RETAIN ALL COMMON LAW, STATUTORY, COPYRIGHT AND OTHER RIGHTS IN ANY DRAWINGS OR DOCUMENTS. NO PARTS SHALL BE REUSED WITHOUT WRITTEN CONSENT BY JUB. ANY REUSE WITHOUT WRITTEN CONSENT BY JUB WILL BE AT CLIENT'S SOLE RISK AND WITHOUT LIABILITY OR LEGAL EXPOSURE TO JUB.	REVISION		BY		DATE
	NO.	DESCRIPTION			

TROYER AVENUE LIFT STATION REPLACEMENT  
TOWN OF PALISADE

GENERAL NOTES

FILE: 81-23-003_G-002
JUB PROJ. #: 81-23-003
DRAWN BY: MWf
DESIGN BY: MWf
CHECKED BY: MWf
AT FULL SIZE, IF NOT ONE INCH, SCALE ACCORDINGLY
LAST UPDATED: 6/17/2024
SHEET NUMBER:

G-002





SYMBOL DESCRIPTION	EXISTING SYMBOL	PROPOSED SYMBOL
SURVEY		
CAP (ALUMINUM)		
CAP (BRASS)		
CHISELED X		
CTRL PT GENERIC		
CTRL PT 1/2" REBAR		
CTRL PT 5/8" REBAR		
CTRL PT 60D NAIL		
CTRL PT HUB & TACK		
CTRL PT PK NAIL		
CTRL PT TEMP BENCH MARK		
NAIL		
NAIL AND TAG		
NAIL (PK)		
BOLT		
DRILL STEEL		
REBAR (1/2")		
REBAR (5/8")		
STAINLESS STEEL ROD		
IRON PIPE		
RAILROAD SPIKE		
R/W MONUMENT		
STONE		
SECTION CORNER. MON.		
SECTION QUARTER MON.		
SITE		
BOLLARD		
BOULDER		
DRINKING FOUNTAIN		
FLAGPOLE		
GATE		
MAIL BOX		
PARKING METER		
POST		
SIGN		
SPOT ELEVATION		
TREE (SHRUB)		
TREE (STUMP)		
TREE (CONIFEROUS)		
TREE (DECIDUOUS)		
TEST HOLE		
WELL		
WELL (MONITORING)		

SYMBOL DESCRIPTION	EXISTING SYMBOL	PROPOSED SYMBOL
UTILITIES		
MANHOLE (GENERIC)		
PRESSURE CLEAN OUT AT GRADE		
THRUST BLOCK		
VAULT		
COMMUNICATION		
TELE. MANHOLE		
TELE. PEDESTAL		
TELE. POLE		
TV PEDESTAL		
GUY WIRE		
DOMESTIC WATER		
FIRE HYDRANT		
SPIGOT		
YARD HYDRANT		
WATER MANHOLE		
WATER METER		
WATER VALVE		
ELECTRIC		
ELEC. MANHOLE		
ELEC. METER		
ELEC. TRANS.		
JUNCTION BOX		
POWER POLE		
POWER STUB		
STREET LIGHT		
TRAFFIC SIGNAL POLE		
IRRIGATION		
IRRIGATION VALVE		
IRRIGATION VALVE BOX		
SPRINKLER		
NATURAL GAS		
GAS METER		
GAS VALVE		
SANITARY SEWER		
CLEANOUT		
SEWER STUB		
SS MANHOLE		
STORM DRAIN		
CATCH BASIN		
DRY WELL		
FLARE END		
GREASE TRAP		
SD MANHOLE		

SYMBOL DESCRIPTION	EXISTING SYMBOL	PROPOSED SYMBOL
FITTINGS		
BEND (11.25°)		
BEND (22.5°)		
BEND (45°)		
BEND (90°)		
CAP		
COUPLING		
CROSS		
REDUCER (CONCENTRIC)		
REDUCER (ECCENTRIC)		
TEE		
TRUE UNION		
WYE		
VALVES		
AIR VALVE		
BLOW OFF		
COMBO VALVE		
BALL VALVE (N.C.)		
BALL VALVE (N.O.)		
BUTTERFLY VALVE		
CHECK VALVE		
CHECK VALVE (FLANGE)		
CHECK VALVE (MJ)		
GATE VALVE		
PLUG VALVE (N.C.)		
PLUG VALVE (N.O.)		
ROAD MARKINGS		
TURN ARROW		
ARROW STRAIGHT		
ARROW STRAIGHT/TURN		
BICYCLE ROUTE		
CAR		
HANDICAP SYMBOL		
ROADWAY		
INTERSTATE ROUTE		
MAST ARM		
PEDESTRIAN SIGNAL		
STATE ROUTE		
TRAFFIC LIGHT		

SYMBOL DESCRIPTION	EXISTING SYMBOL	PROPOSED SYMBOL
ROADWAY (CONT.)		
TYPE 2 BARRICADE		
US ROUTE		
TRAFFIC ATTENUATOR		
JERSEY BARRIER		

ABBREVIATIONS	
ASSY	ASSEMBLY
>	ANGLE
@	AT (MEASUREMENTS)
BLDG	BUILDING
BM	BENCH MARK
BSC	BITUMINOUS SURFACE COURSE
BSW	BACK OF SIDEWALK
BW	BOTH WAYS
C	CHANNEL (STRUCTURAL)
C/L	CENTER LINE
CMP	CORRUGATED METAL PIPE
CO	CLEANOUT
CONC	CONCRETE
CONT	CONTINUOUS
CPLG	COUPLING
CU FT	CUBIC FEET
CU YD	CUBIC YARD
DEG OR °	DEGREE
DET	DETAIL
DIA OR Ø	DIAMETER
DIP	DUCTILE IRON PIPE
DIST	DISTRIBUTION
DWG	DRAWING
EA	EACH
ELB	ELBOW
ELEV	ELEVATION
EW	EACH WAY
EXIST	EXISTING
FG	FINISH GRADE
FH	FIRE HYDRANT
FLG	FLANGE
FT OR '	FEET
GV	GATE VALVE
HORIZ	HORIZONTAL
ID	INSIDE DIAMETER
IN OR "	INCH
LB OR #	POUND
LF	LINEAL FEET
LN	LINEAL
MAX	MAXIMUM
MIN	MINIMUM
NO OR #	NUMBER
PE	POLYETHYLENE
PL	PLATE
PL	PROPERTY LINE
PVC	POLYVINYL –CHLORIDE
R	RADIUS
RP	RADIUS POINT
R&R	REMOVE & REPLACE
REM	REMOVE
REQ'D	REQUIRED
REV	REVISION
R/W	RIGHT–OF–WAY

S	SLOPE
SPEC	SPECIFICATION
STA	STATION
STD	STANDARD
STL	STEEL
ST STL	STAINLESS STEEL
TBC	TOP BACK OF CURB
TYP	TYPICAL
TFC	TOP FACE OF CONCRETE
W/	WITH
W/O	WITHOUT
W/REQ'D	WHERE REQUIRED

REUSE OF DRAWINGS JUB SHALL RETAIN ALL COMMON LAW, STATUTORY, COPYRIGHT AND OTHER RIGHTS IN THESE DRAWINGS AND ANY INFORMATION CONTAINED HEREIN. THESE DRAWINGS AND ANY INFORMATION CONTAINED HEREIN SHALL NOT BE REUSED WITHOUT WRITTEN CONSENT BY JUB. ANY REUSE WITHOUT WRITTEN CONSENT BY JUB WILL BE AT CLIENT'S SOLE RISK AND WITHOUT LIABILITY OR LEGAL EXPOSURE TO JUB.		NO.	DESCRIPTION	BY	DATE

TROYER AVENUE LIFT STATION REPLACEMENT  
TOWN OF PALISADE

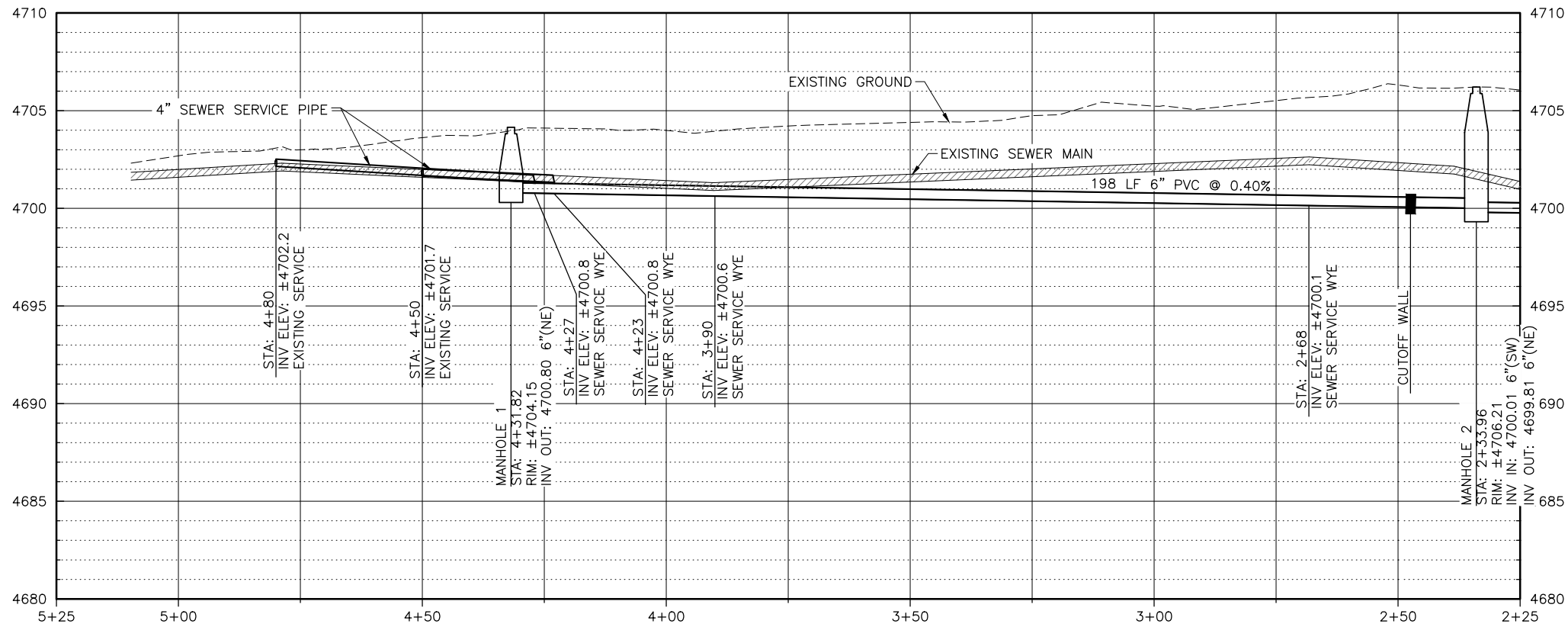
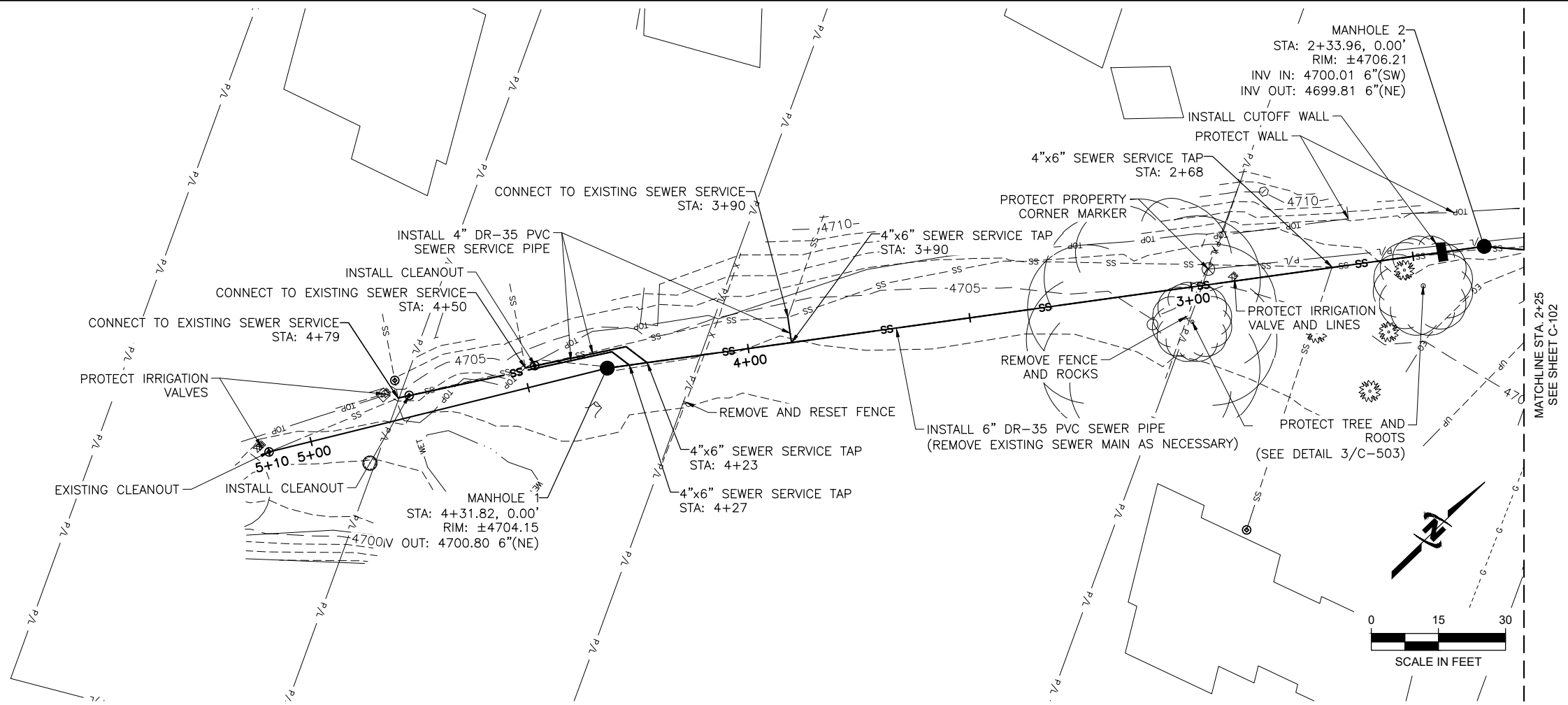
SYMBOL LEGEND AND ABBREVIATIONS







Plot Date: 9/19/2024 3:28 PM Plotted By: Matt Filla  
Date Created: 9/17/2024 10:11 AM Project: JUB TOWN OF PALISADE 18-003 TOWN ENGINEER TROYER LIFT STATION DESIGN AND SHEET 01-23-003 C-101.DWG



#### CONSTRUCTION NOTES

1. ALL CONSTRUCTION TO BE PERFORMED IN ACCORDANCE WITH THE CITY OF GRAND JUNCTION STANDARD CONTRACT DOCUMENTS FOR CAPITAL IMPROVEMENTS CONSTRUCTION.
2. EXISTING SEWER MAIN SHALL BE REMOVED AS NECESSARY TO COMPLETE THE WORK. WHERE REMOVAL OF EXISTING SEWER MAIN BECOMES UNNECESSARY, PIPE SHALL BE ABANDONED BY PLUGGING REMAINING END WITH CONCRETE PER DETAIL 3 SHEET C-501.
3. ALL SERVICE LINE CONNECTIONS TO NEW MAIN SHALL BE ACCOMPLISHED WITH FULL BODY WYES OR TEES. TAPPING SADDLES WILL NOT BE ALLOWED. SEE CITY OF GRAND JUNCTION STANDARD DETAIL SS-06.
4. MANHOLES SHALL BE SANITARY SEWER BASIC MANHOLES (48" I.D.) AND INCLUDE CONNECTION TO ADJACENT SEWER LINE, FORMING INVERTS, AND ADJUSTING TO FINAL GRADE. SEE CITY OF GRAND JUNCTION STANDARD DETAIL SS-02.
5. A CLAY CUT-OFF WALL SHALL BE PLACED 10 FEET UPSTREAM FROM ALL NEW MANHOLES UNLESS OTHERWISE NOTED. THE CUT-OFF WALL SHALL EXTEND FROM 6 INCHES BELOW TO 6 INCHES ABOVE GRANULAR BACKFILL IMPORT MATERIAL APPROVED BY THE ENGINEER.
6. WHERE SEWER CROSSES POTABLE WATER LINES, SEWER TO BE ENCASED PER CITY OF GRAND JUNCTION STANDARD DETAIL GU-04 (NOTE: ENCASEMENT NOT REQUIRED IF SEWER CROSSES UNDERNEATH WATER LINE BY GREATER THAN 18").
7. ALL GROUND COVER MATERIAL SHALL BE REPLACED TO MATCH EXISTING. GRAVEL SHALL BE STOCKPILED AND RESET UPON COMPLETION OF THE WORK. DISTURBED GRASS SHALL BE REPLACED WITH SOD.



J-U-B ENGINEERS, INC.

J-U-B ENGINEERS, INC.

305 S. Main Street

Unit 6

Palisade, CO 81526

Phone: 970.208.8508

www.jub.com

#### BID SET

REUSE OF DRAWINGS  
JUB SHALL RETAIN ALL COMMON LAW, STATUTORY, COPYRIGHT AND OTHER RIGHTS IN THIS DRAWING. NO PART OF THIS DRAWING SHALL BE REPRODUCED OR TRANSMITTED IN ANY FORM OR BY ANY MEANS, ELECTRONIC OR MECHANICAL, INCLUDING PHOTOCOPYING, RECORDING, OR BY ANY INFORMATION STORAGE AND RETRIEVAL SYSTEM, WITHOUT THE WRITTEN CONSENT OF JUB. ANY REUSE WITHOUT WRITTEN CONSENT BY JUB WILL BE AT CLIENT'S SOLE RISK AND WITHOUT LIABILITY OR LEGAL EXPOSURE TO JUB.

NO.	REVISION	DESCRIPTION	BY	DATE

#### TROYER AVENUE LIFT STATION REPLACEMENT TOWN OF PALISADE

#### PLAN AND PROFILE

FILE: 81-23-003 C-10X

JUB PROJ. #: 81-23-003

DRAWN BY: MWF

DESIGN BY: MWF

CHECKED BY: MWF

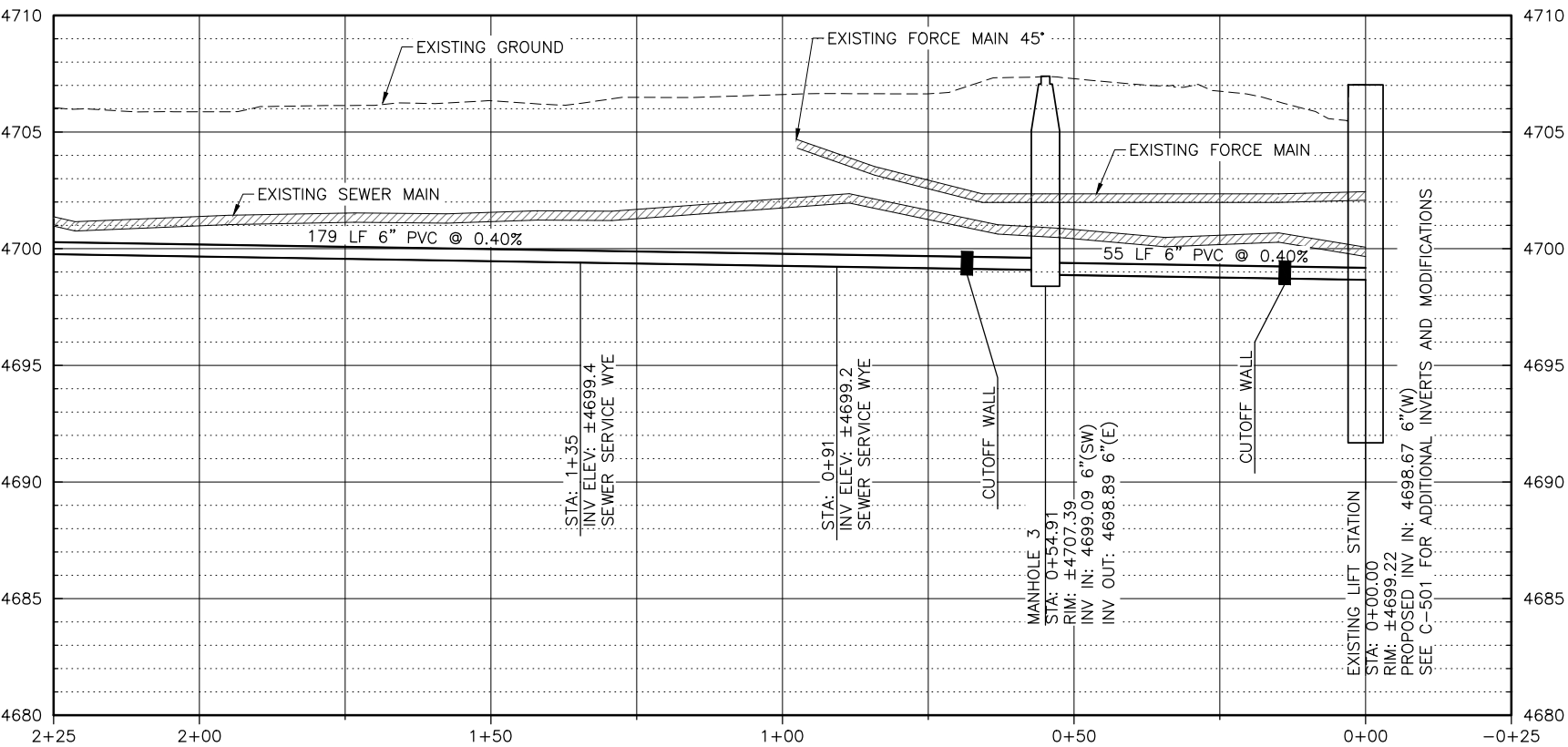
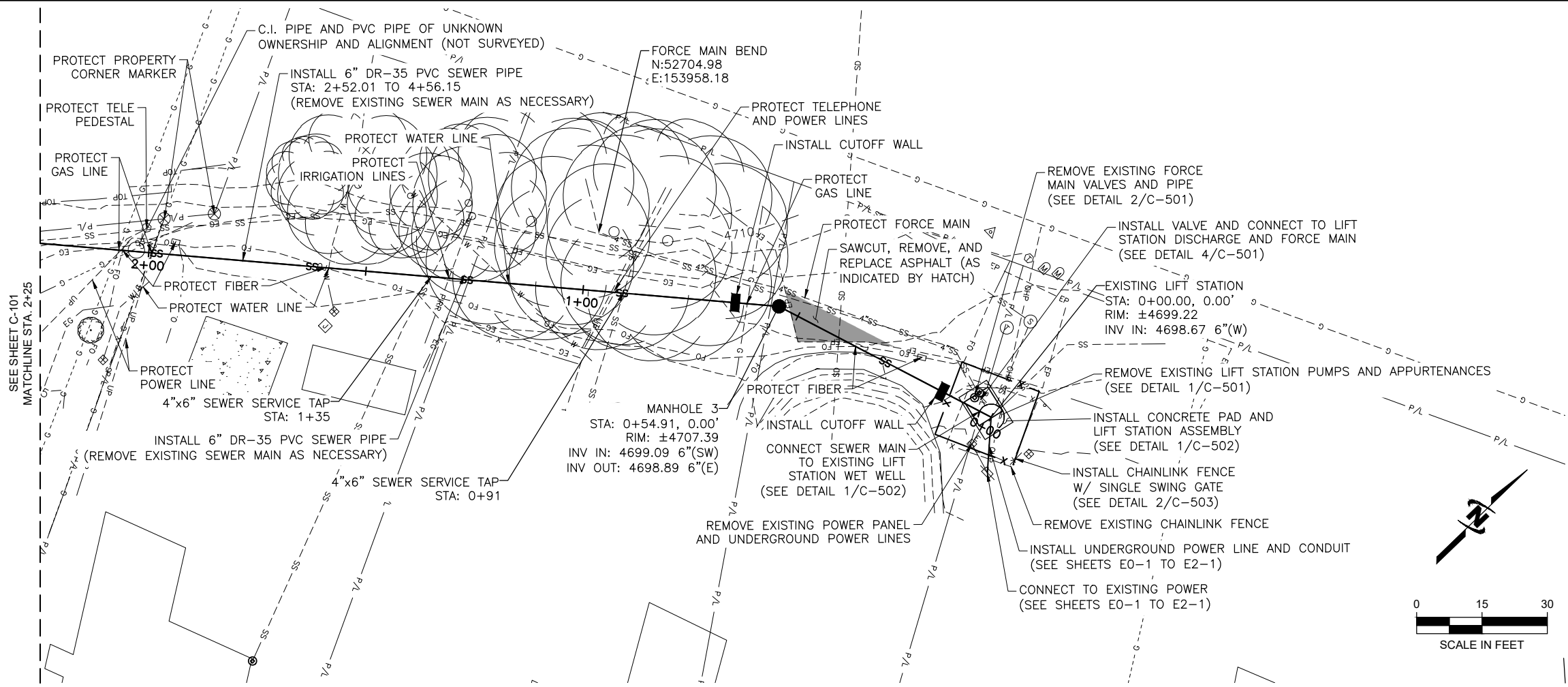
AT FULL SIZE, IF NOT ONE  
INCH, SCALE ACCORDINGLY

LAST UPDATED: 6/19/2024

SHEET NUMBER:

C-101

Plot Date: 9/19/2024 3:28 PM Plotted By: Matt Filla  
Date Created: 5/17/2024 10:11 AM Project: JUB TOWN OF PALISADE 18-003 TOWN ENGINEER: TROYER LIFT STATION DESIGN: C-102.DWG



CONSTRUCTION NOTES

- ALL CONSTRUCTION TO BE PERFORMED IN ACCORDANCE WITH THE CITY OF GRAND JUNCTION STANDARD CONTRACT DOCUMENTS FOR CAPITAL IMPROVEMENTS CONSTRUCTION.
- EXISTING SEWER MAIN SHALL BE REMOVED AS NECESSARY TO COMPLETE THE WORK. WHERE REMOVAL OF EXISTING SEWER MAIN BECOMES UNNECESSARY, PIPE SHALL BE ABANDONED BY PLUGGING REMAINING END WITH CONCRETE PER DETAIL 3 SHEET C-501.
- ALL SERVICE LINE CONNECTIONS TO NEW MAIN SHALL BE ACCOMPLISHED WITH FULL BODY WYES OR TEES. TAPPING SADDLES WILL NOT BE ALLOWED. SEE CITY OF GRAND JUNCTION STANDARD DETAIL SS-06.
- MANHOLES SHALL BE SANITARY SEWER BASIC MANHOLES (48" I.D.) AND INCLUDE CONNECTION TO ADJACENT SEWER LINE, FORMING INVERTS, AND ADJUSTING TO FINAL GRADE. SEE CITY OF GRAND JUNCTION STANDARD DETAIL SS-02.
- A CLAY CUT-OFF WALL SHALL BE PLACED 10 FEET UPSTREAM FROM ALL NEW MANHOLES UNLESS OTHERWISE NOTED. THE CUT-OFF WALL SHALL EXTEND FROM 6 INCHES BELOW TO 6 INCHES ABOVE GRANULAR BACKFILL IMPORT MATERIAL APPROVED BY THE ENGINEER.
- WHERE SEWER CROSSES POTABLE WATER LINES, SEWER TO BE ENCASED PER CITY OF GRAND JUNCTION STANDARD DETAIL GU-04 (NOTE: ENCASEMENT NOT REQUIRED IF SEWER CROSSES UNDERNEATH WATER LINE BY GREATER THAN 18").
- ALL GROUND COVER MATERIAL SHALL BE REPLACED TO MATCH EXISTING. GRAVEL SHALL BE STOCKPILED AND RESET UPON COMPLETION OF THE WORK. DISTURBED GRASS SHALL BE REPLACED WITH SOD.



J-U-B ENGINEERS, INC.

J-U-B ENGINEERS, INC.

305 S. Main Street

Unit 6

Palisade, CO 81526

Phone: 970.208.8508

www.jub.com

BID SET

REUSE OF DRAWINGS  
JUB SHALL RETAIN ALL COMMON LAW, STATUTORY, COPYRIGHT AND OTHER RIGHTS IN THIS DRAWING. NO PART OF THIS DRAWING SHALL BE REPRODUCED OR TRANSMITTED IN ANY FORM OR BY ANY MEANS, ELECTRONIC OR MECHANICAL, INCLUDING PHOTOCOPYING, RECORDING, OR BY ANY INFORMATION STORAGE AND RETRIEVAL SYSTEM, WITHOUT THE WRITTEN CONSENT OF JUB. ANY REUSE WITHOUT WRITTEN CONSENT BY JUB WILL BE AT CLIENTS' SOLE RISK AND WITHOUT LIABILITY OR LEGAL EXPOSURE TO JUB.

NO.	REVISION	DESCRIPTION	BY	DATE

TROYER AVENUE LIFT STATION REPLACEMENT  
TOWN OF PALISADE

PLAN AND PROFILE

FILE: 81-23-003 C-10X

JUB PROJ. #: 81-23-003

DRAWN BY: MWF

DESIGN BY: MWF

CHECKED BY: MWF

AT FULL SIZE, IF NOT ONE  
INCH SCALE ACCORDINGLY

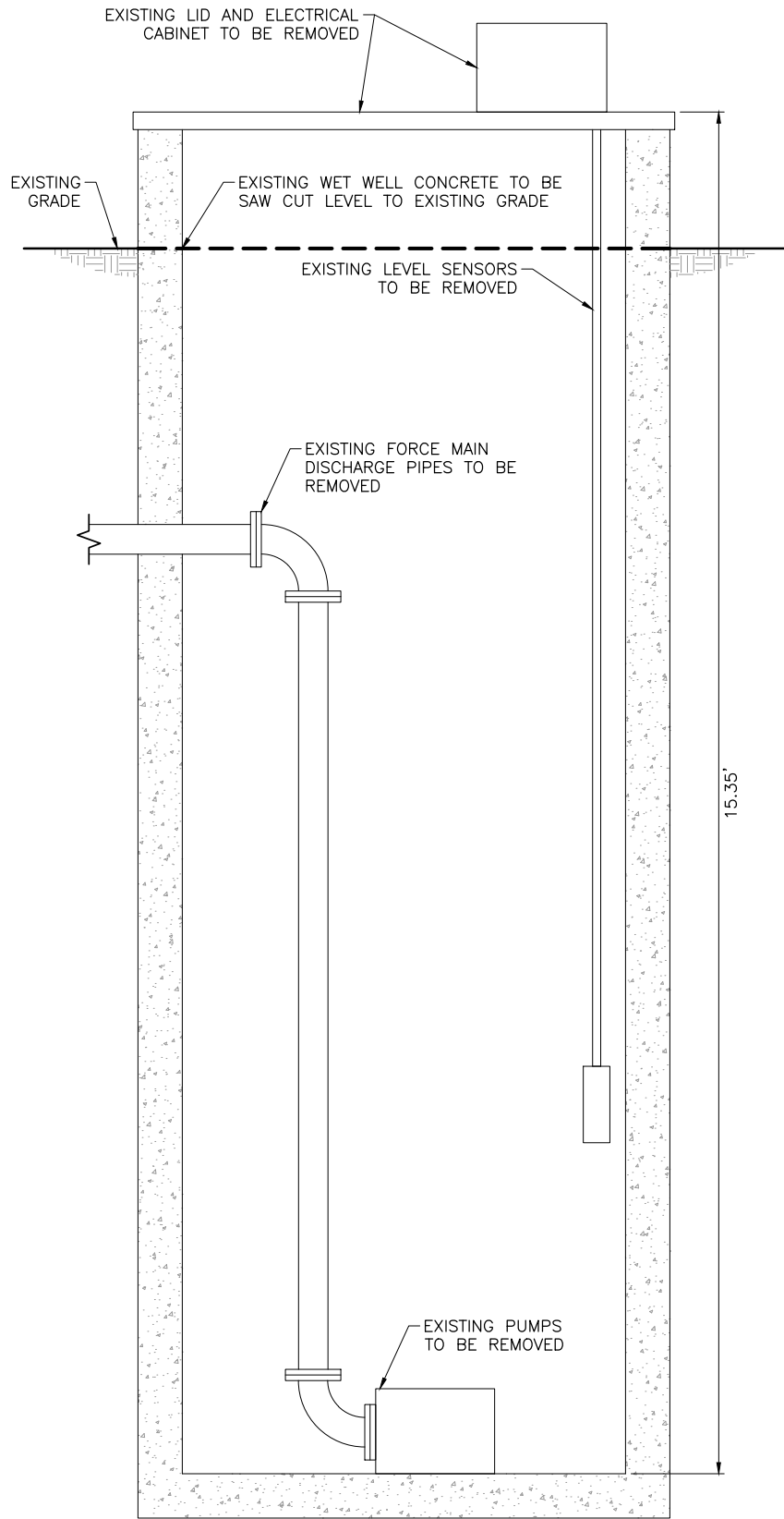
LAST UPDATED: 6/19/2024

SHEET NUMBER:

C-102

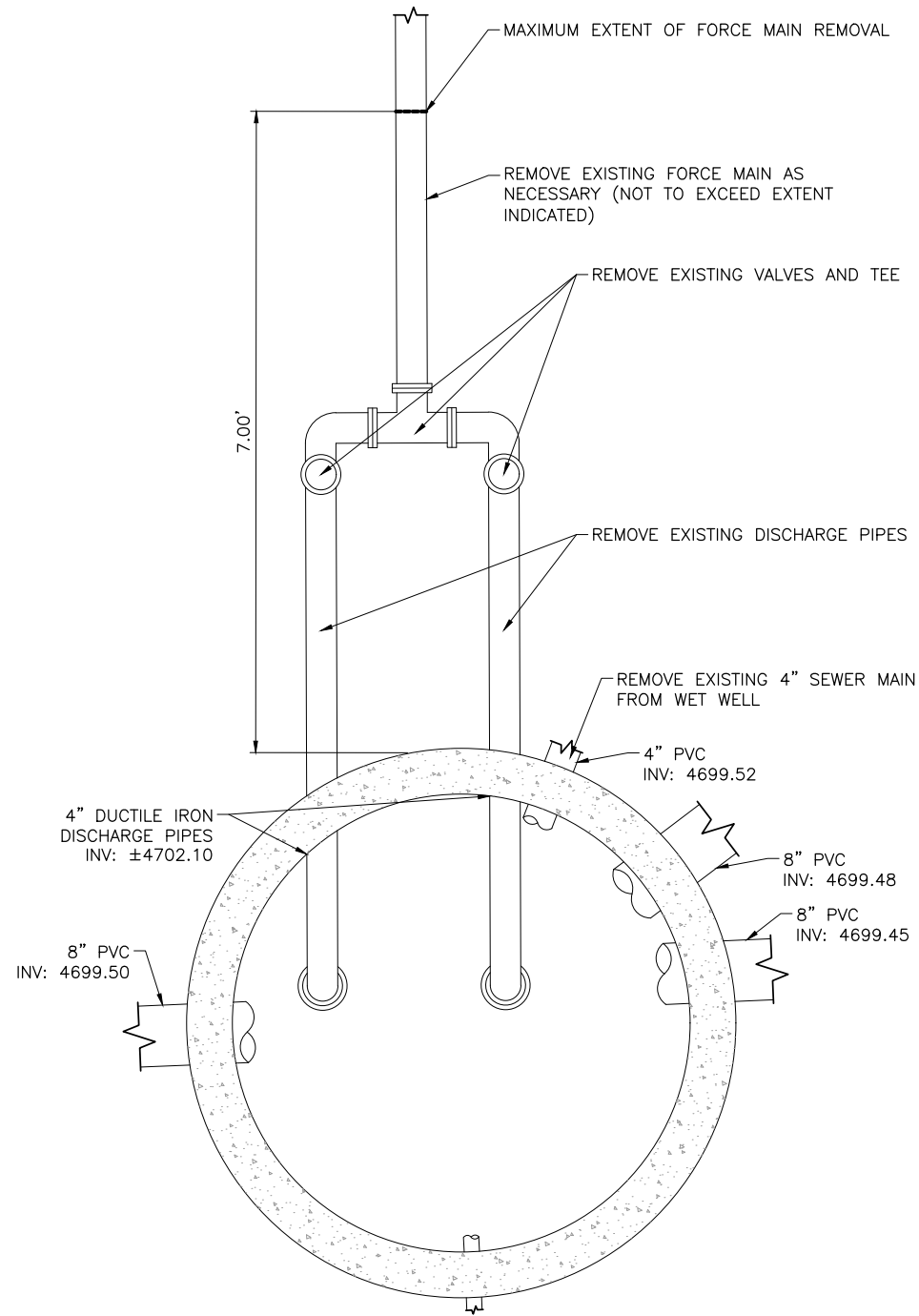


Plot Date: 9/19/2024 3:28 PM Plotted By: Matt Filla  
Date Created: 9/17/2024 10:14 PALISADE-GPUBLICPROJECTS\JUBTOWN OF PALISADE\18-003 TOWN ENGINEER TROYER LIFT STATION\DESIGN\AD\Sheet 01-23-003 C-501.DWG

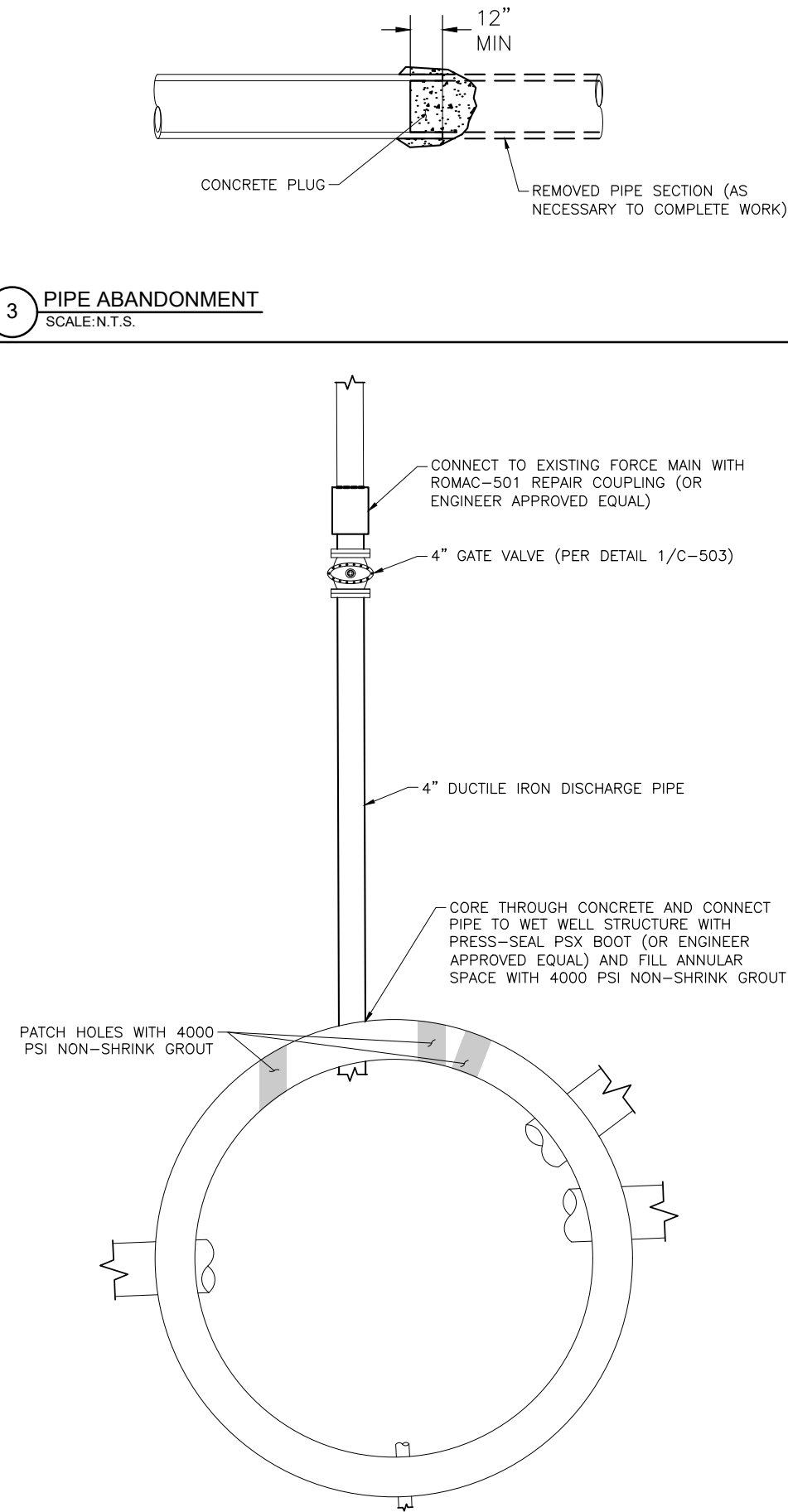


NOTES:  
1. INFLUENT SEWER LINES NOT DEPICTED.

1 EXISTING LIFT STATION REMOVALS - PROFILE  
SCALE: N.T.S.



2 EXISTING LIFT STATION REMOVALS - PLAN CROSS SECTION  
SCALE: N.T.S.



3 PIPE ABANDONMENT  
SCALE: N.T.S.

4 LIFT STATION IMPROVEMENTS - PLAN CROSS SECTION  
SCALE: N.T.S.

J-U-B ENGINEERS, INC.

J-U-B ENGINEERS, INC.  
305 S. Main Street  
Unit 6  
Palisade, CO 81526  
Phone: 970.208.8508  
www.jub.com

BID SET

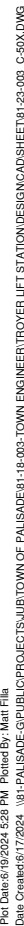
REUSE OF DRAWINGS  
JUB SHALL RETAIN ALL COMMON LAW, STATUTORY, COPYRIGHT AND OTHER RIGHTS IN THIS DRAWING. NO PART OF THIS DRAWING SHALL BE REPRODUCED OR TRANSMITTED IN ANY FORM OR BY ANY MEANS, ELECTRONIC OR MECHANICAL, INCLUDING PHOTOCOPYING, RECORDING, OR BY ANY INFORMATION STORAGE AND RETRIEVAL SYSTEM, WITHOUT THE WRITTEN CONSENT OF JUB. ANY REUSE WITHOUT WRITTEN CONSENT BY JUB WILL BE AT CLIENT'S SOLE RISK AND WITHOUT LIABILITY OR LEGAL EXPOSURE TO JUB.

NO.	REVISION	DESCRIPTION	BY	DATE

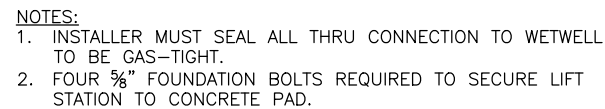
TROYER AVENUE LIFT STATION REPLACEMENT  
TOWN OF PALISADE

DETAILS

FILE: 81-23-003\_C-50X  
JUB PROJ. #: 81-23-003  
DRAWN BY: MWF  
DESIGN BY: MWF  
CHECKED BY: MWF  
AT FULL SIZE, IF NOT ONE INCH, SCALE ACCORDINGLY  
LAST UPDATED: 6/17/2024  
SHEET NUMBER:  
C-501



LIFT STATION IMPROVEMENTS - PROFILE  
SCALE: N.T.S.



CONCRETE PAD - PLAN  
SCALE:N.T.S.



**J-U-B ENGINEERS, INC.**  
305 S. Main Street

305 S. Main Street  
Unit 6  
Palisade, CO 81526

Phone: 970.208.8508  
www.jub.com

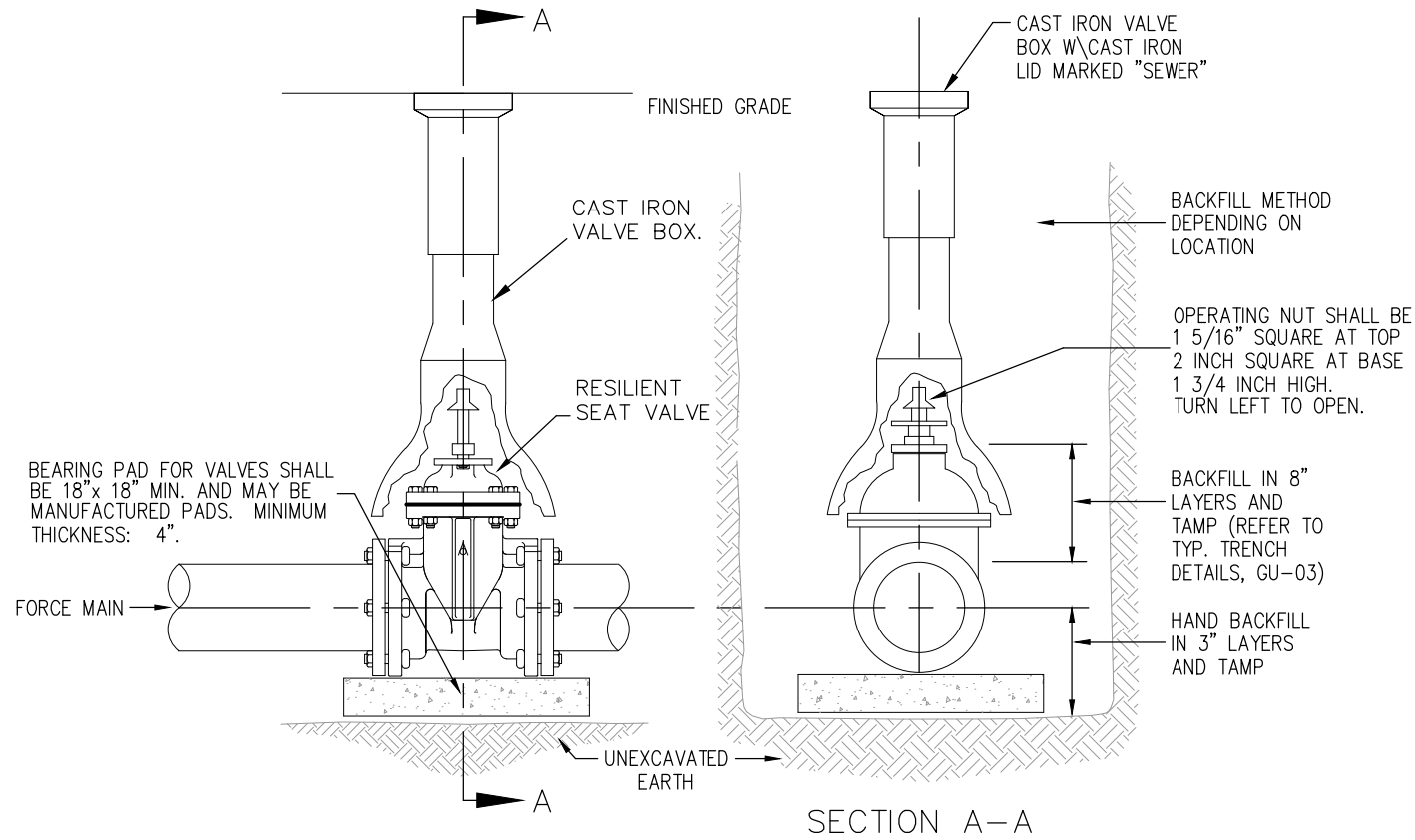
BID SET

ALL VALVES TO BE RESILIENT SEAT, EPOXY COATED INSIDE AND OUT CITY OF GRAND JUNCTION AND AWWA SPECS.

ALL VALVE BOXES TO BE OF CAST IRON CONSTRUCTION, TWO PIECE SLIDE CASING ADJUSTABLE DESIGN PER CITY OF GRAND JUNCTION SPECS.

ALL PACKING BOLTS AND VALVE BONNET BOLTS SHALL BE STAINLESS STEEL.  
ALL BOLTS FOR MECHANICAL JOINTS SHALL BE COR-BLUE OR APPROVED EQUAL.  
ALL BOLTS FOR FLANGE CONNECTIONS SHALL BE STAINLESS STEEL BOLTS  
COATED WITH ANTI-SEIZE.

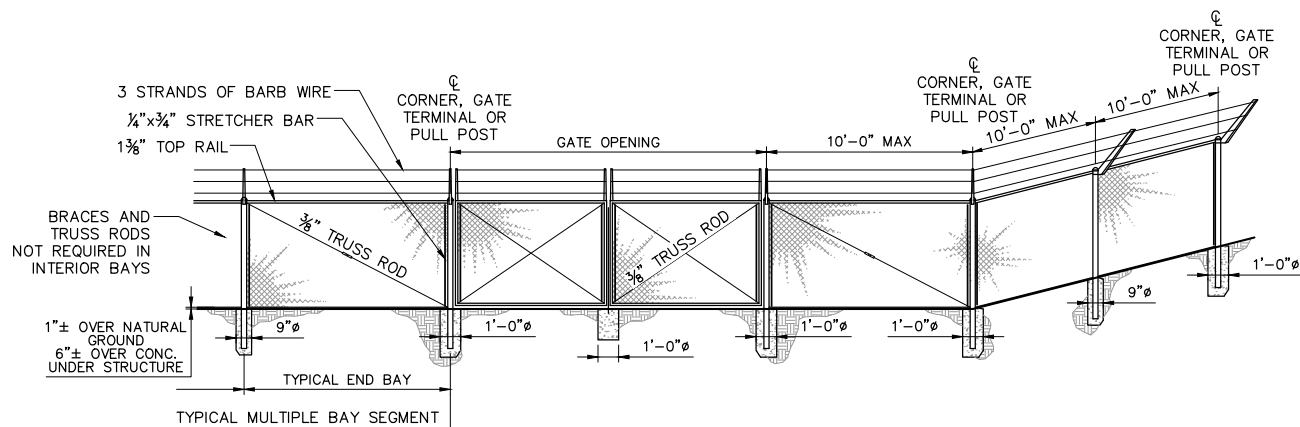
VALVE BOX BASE IS NOT TO BE SUPPORTED BY THE VALVE BODY OR THE PIPE.



1 VALVE BOX ASSEMBLY  
SCALE: N.T.S.

NOTES:

1. ALL FABRIC SHALL BE 6 FEET HIGH CHAIN LINK OF 2 INCH GALVANIZED MESH OF 9-GAUGE.
2. ALL STEEL PIPE MEMBERS SHALL CONFORM TO THE REQUIREMENTS OF A.S.T.M. DESIGNATION A-120, SCHEDULE 40, HOT DIPPED ZINC COATED STEEL PIPE.
3. ALL POSTS SHALL BE SET IN CONCRETE AND SHALL BE TOPPED WITH BALL TYPE OR OTHER APPROVED ORNAMENT.
4. ALL END, CORNER OR PULL POST SHALL BE 9 FEET IN LENGTH WITH A MINIMUM DIAMETER OF 2½ INCHES. ALL LINE POSTS SHALL BE 8 FEET 8 INCHES IN LENGTH WITH A MINIMUM DIAMETER OF 2½ INCHES.
5. AT EACH LOCATION WHERE AN ELECTRIC TRANSMISSION, DISTRIBUTION, OR SECONDARY LINE CROSSES A FENCE, THE CONTRACTOR SHALL FURNISH AND INSTALL A GROUND CONFORMING TO ARTICLE 250 OF THE NATIONAL ELECTRIC CODE. A GROUND SHALL ALSO BE INSTALLED A MAXIMUM OF EVERY 500 FT. ALONG THE FENCE. THE GROUND ROD SHALL BE A MINIMUM DIAMETER OF ½ IN. AND 8 FT. IN LENGTH, AND DRIVEN AT LEAST 7 ½ FT. INTO THE GROUND. THE ROD SHALL BE CONNECTED TO EACH WIRE WITH A MINIMUM AWG NO. 8 STRANDED COPPER WIRE. GROUNDING WILL NOT BE PAID FOR SEPARATELY BUT SHALL BE INCLUDED IN THE COST OF THE FENCE.



HEIGHT OF FABRIC	DEPTH OF POST	LENGTH OF END, CORNER OR PULL POSTS	LENGTH OF LINE POSTS	SIZE OF POSTS		
				END, CORNER AND PULL PIPE OPTION	LINE POST (MIN. SIZE) PIPE OPTION	GATE POSTS
6'	3'+	9'+	8'-8"	2 7/8"	2 3/8"	2 7/8"

GATES			
GATE POSTS AND GATE FRAMES			
HEIGHT	GATE OPENING		
6 FEET AND OVER	SINGLE TO 6' OR DOUBLE TO 12'		2 7/8"
	SINGLE OVER 6' TO 13' OR DOUBLE OVER 12' TO 24'		4"
	SINGLE OVER 13' TO 18' OR DOUBLE OVER 24' TO 36'		8 1/2"
	SINGLE OVER 18' OR DOUBLE OVER 36'		8 3/4"

2) SECURITY FENCE  
SCALE: N.T.S.

SCALE:N.T.S.

1. TRENCHING SHALL BE KEPT TO MINIMUM EXTENT POSSIBLE WITHIN TREE DRIPLINE ZONE.
2. EXCAVATED SOIL SHALL BE STORED ON THE OPPOSITE SIDE OF THE TRENCH FROM THE TREE.
3. ROOTS 2" Ø OR LARGER THAT CAN NOT BE AVOIDED SHALL BE SAW CUT PERPENDICULAR TO DIRECTION OF GROWTH. WHEN ROOTS 2" Ø OR LARGER ARE ACCIDENTALLY BROKEN, DIG OUT ENOUGH OF THE TRENCH SIDE TO SAW THROUGH AN UNDAMAGED PORTION OF THE ROOT.
4. IN TRENCHES WHERE ROOTS HAVE BEEN CUT, KEEP ALL ROOT ENDS MOIST WITH WET BURLAP AND BACKFILL AS SOON AS POSSIBLE.
5. WHEN COMPACTING BACKFILL, DO NOT EXCEED ORIGINAL FIRMNESS.
6. BACKFILL SHALL BE WATERED IMMEDIATELY AFTER PLACEMENT.
7. FURTHER SOIL COMPACTION SHALL BE PREVENTED BY MINIMIZING HEAVY EQUIPMENT TRAFFIC AND EXCESSIVE FOOT TRAFFIC WITHIN DRIPLINE ZONE. METHODS OF LIMITING COMPACTION INCLUDE THE "MULCH METHOD" (PLACING 4" TO 12" OF WOOD CHIPS) OR THE "BRIDGE METHOD" (PLACING RAILROAD TIES IN A RADIAL ORIENTATION AROUND TREE AND COVERING WITH STEEL PLATES), AND SHALL BE REMOVED AFTER WORK IS COMPLETE.

3) TREE ROOT PROTECTION  
SCALE: N.T.S.

SCALE:N.T.S.

TROYER AVENUE LIFT STATION REPLACEMENT  
TOWN OF PALISADE

1  
2  
3  
4  
5  
6

LE : 81-23-003\_C-50X

IB PROJ. # : 81-23-003

RAWN BY: MWF

DESIGN BY: MWF

CHECKED BY: MWF

ONE INCH  
AT FULL SIZE IF NOT

INCH, SCALE ACCORDING TO

LAST UPDATED: 6/17/202

SHEET NUMBER

C-501

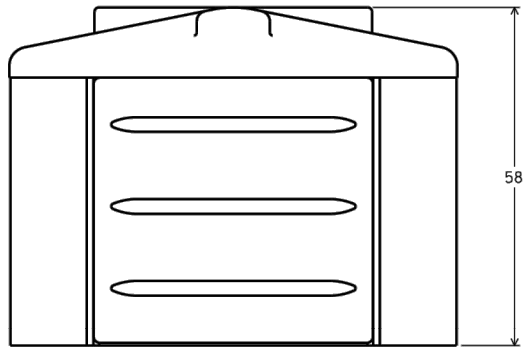
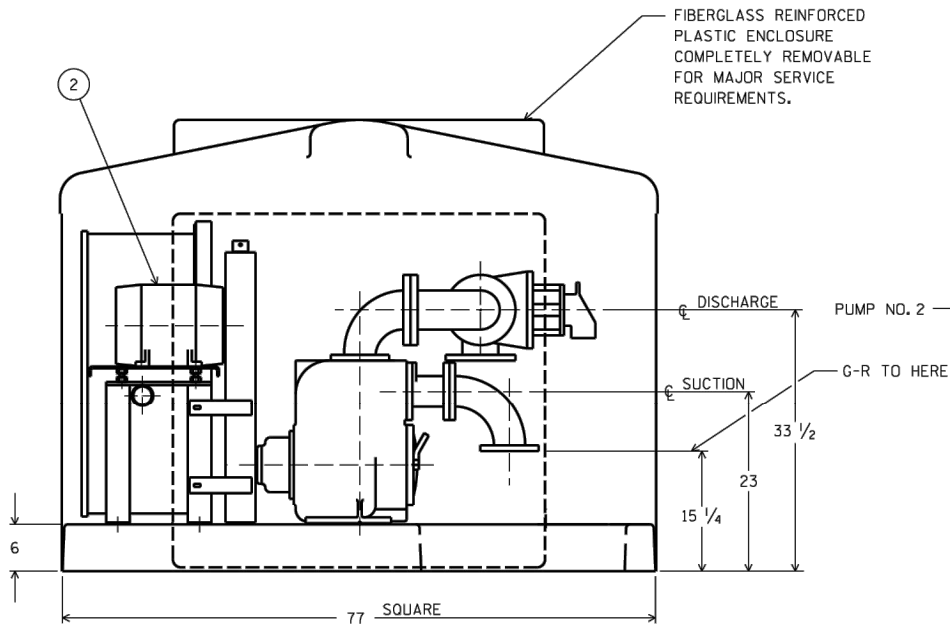
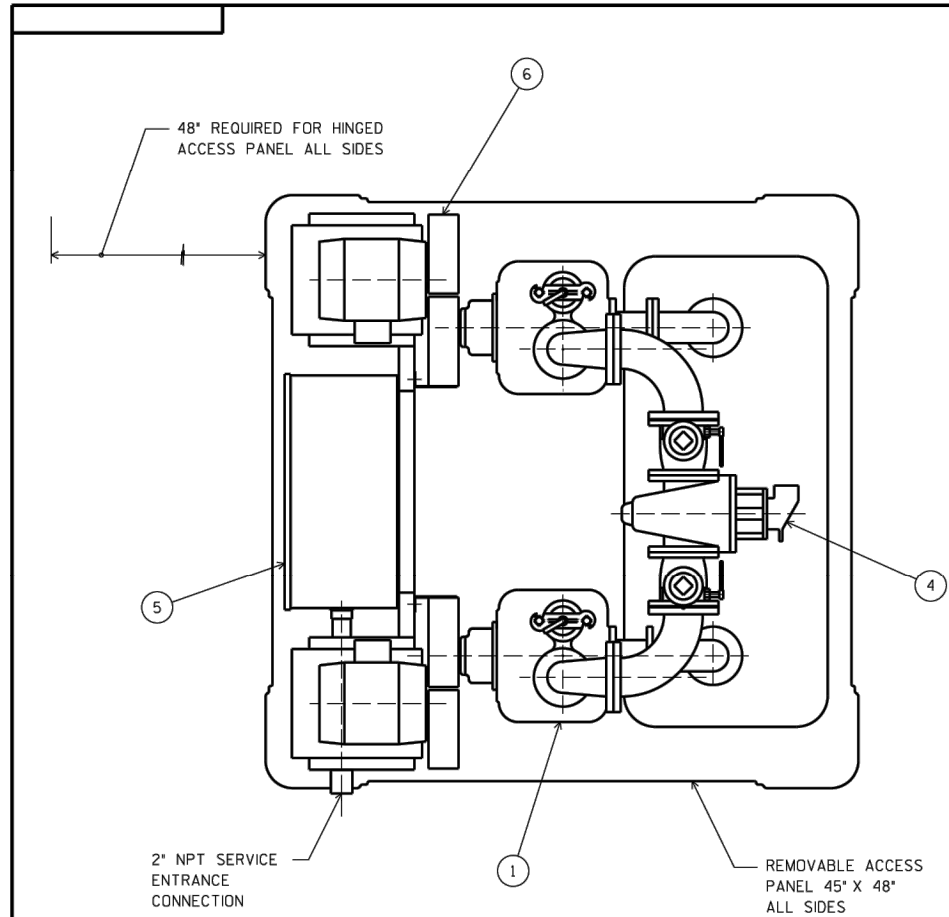
0-50.

---

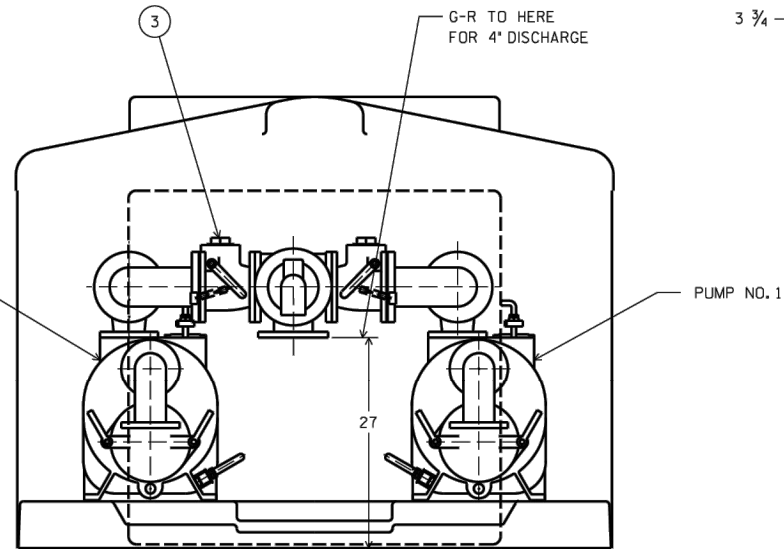
---



Plot Date: 9/19/2024 3:28 PM Plotted By: Matt Filla  
Date Created: 5/17/2024 10:41 PALISADE-GPJUBPROJECTS\JUB TOWN OF PALISADE\18-003 TOWN ENGINEER TROYER LIFT STATION\DESIGN\AD\Sheet18-23-003 C-50X.DWG



ELEVATION VIEW



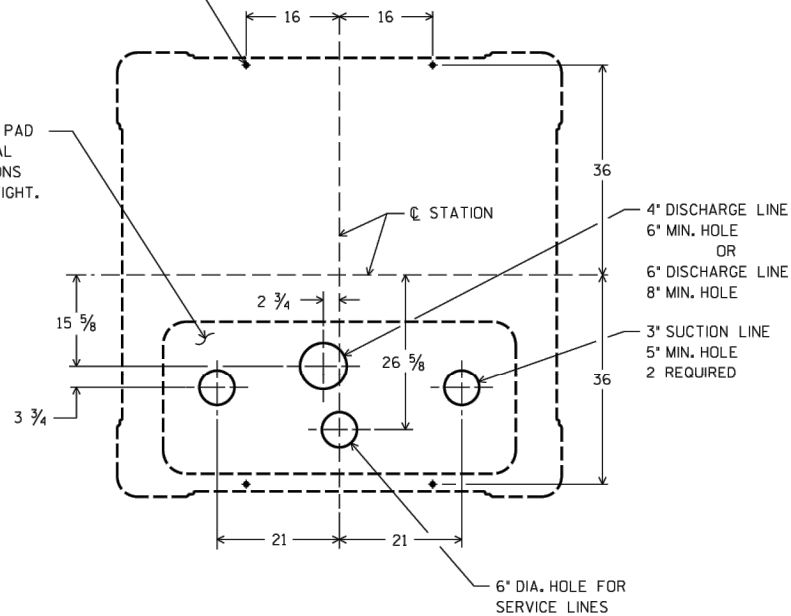
NOTE: CUSTOMER SUCTION AND DISCHARGE CONNECTIONS ARE 125" FLANGE

REVISIONS			
SYM.	DATE	RECORD	4398
DR.	CL.		

ITEM	DESCRIPTION	MAT'L & SIZE
1	PUMP	CAST IRON T3C-B
2	MOTOR	CAST IRON
3	CHECK VALVE	CAST IRON 4"
4	PLUG VALVE	CAST IRON 4"
5	MOTOR CONTROL PANEL	STEEL
6	BELT GUARD	STEEL

5/8" FOUNDATION BOLTS  
4 REQ'D (BY OTHERS)  
4" BOLT PROJECTION  
FROM PAD

THIS AREA OPEN TO PAD  
INSTALLER MUST SEAL  
ALL THRU CONNECTIONS  
TO WET WELL GAS TIGHT.



3 X 4 X 4 AS SHOWN

TROYER LIFT STATION  
PALISADES, COLORADO  
STATION NO.: 23-8998-AM

238998AM.S01	
THE GORMAN-RUPP CO. MANSFIELD, OHIO ST. THOMAS, ONTARIO	
NAME 6' X 6' ABOVEGROUND SEWAGE LIFT STATION W/DUPLEX T3C-B PUMPS	
DRN. KAL	CHK. BM
APP. BM	DATE 8-12-96
D 45113-023	SERIAL NO. 23-8998-AM

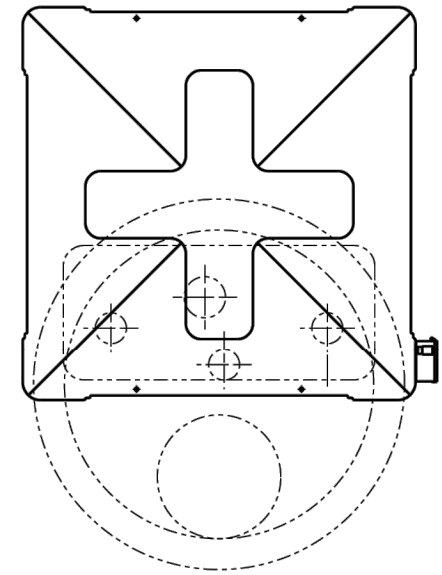
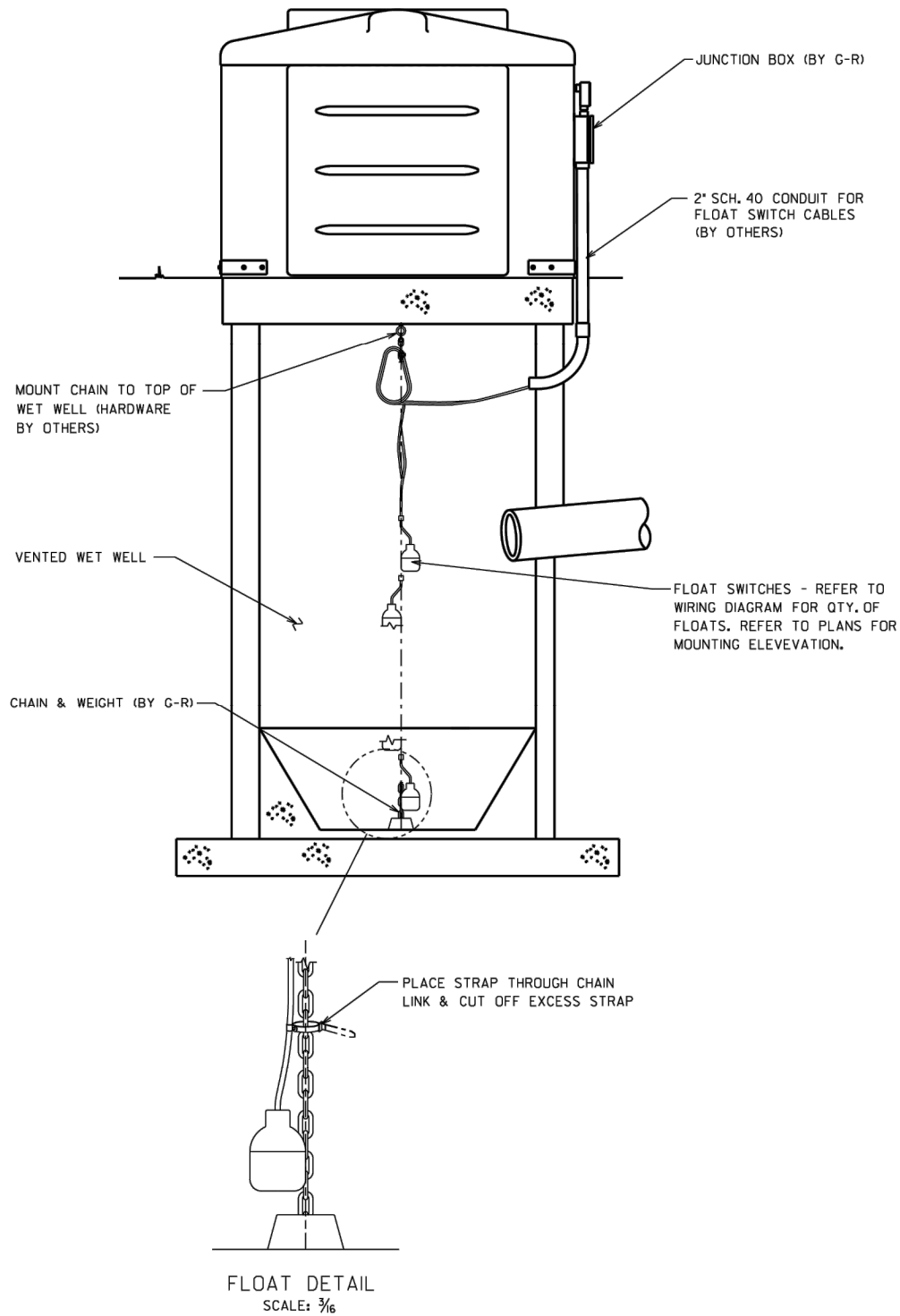
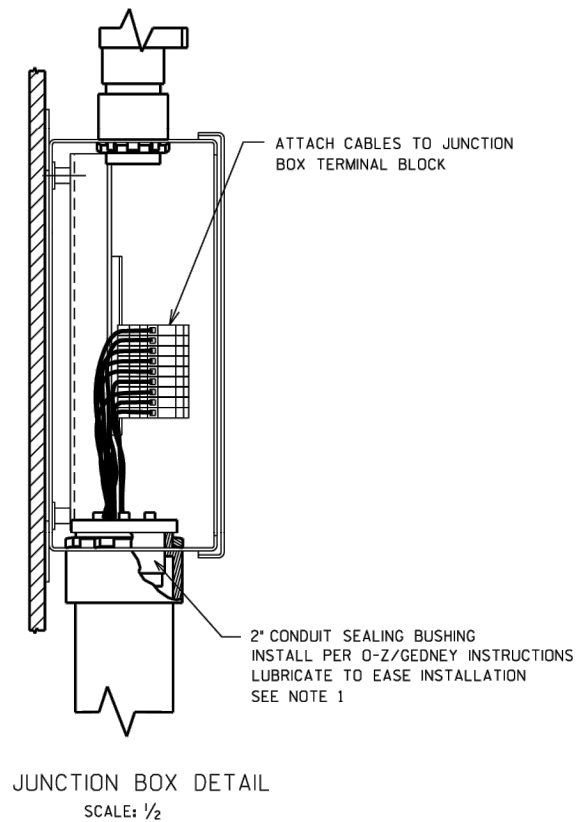
BID SET

REUSE OF DRAWINGS			
JUB SHALL RETAIN ALL COMMON LAW, STATUTORY, COPYRIGHT AND TRADE SECRET RIGHTS IN THIS DRAWING. NO PART OF THIS DRAWING SHALL BE REPRODUCED OR TRANSMITTED IN ANY FORM OR BY ANY MEANS, ELECTRONIC OR MECHANICAL, INCLUDING PHOTOCOPYING, RECORDING, OR BY ANY INFORMATION STORAGE AND RETRIEVAL SYSTEM, WITHOUT THE WRITTEN CONSENT OF JUB. ANY REUSE WITHOUT WRITTEN CONSENT BY JUB WILL BE AT CLIENT'S SOLE RISK AND WITHOUT LIABILITY OR LEGAL EXPOSURE TO JUB.			
REVISION	NO.	DESCRIPTION	BY
			APR
			DATE

TROYER AVENUE LIFT STATION REPLACEMENT  
TOWN OF PALISADE

LIFT STATION

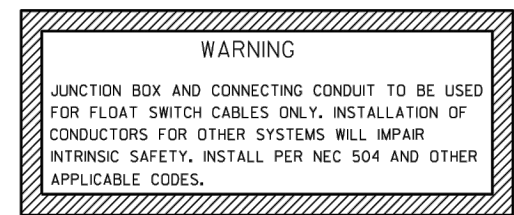
Plot Date: 9/19/2024 3:28 PM Plotted By: Matt Filla  
Date Created: 5/17/2024 10:47:41 AM Project: JUB TOWN OF PALISADES 18-003 TOWN ENGINEER TROYER LIFT STATION DESIGN AND SHEET 01-23-003 C-50X.DWG



PLAN VIEW

NOTES:

- IF FEWER THAN 5 FLOAT SWITCH CABLES ARE INSTALLED, RUBBER PLUGS IN REMAINING HOLES OF SEALING BUSHING MUST BE LEFT IN PLACE TO PREVENT PASSAGE OF WET WELL GASES.
- ALL WET WELL BRACKETS, SUPPORTS, AND HARDWARE TO BE CORROSION-RESISTANT



6' X 6' ABOVE GROUND

WW00938.s01

		THE GORMAN-RUPP CO.					
MANSFIELD, OHIO		ST. THOMAS, ONTARIO					
NAME: EXTERNAL JUNCTION BOX INSTALLATION FOR FLOAT SWITCH CONTROL (INTRINSICALLY SAFE)							
DRN.	JMR	CHK.	BM	APP.	BM	DATE	4-27-99
D		WW-00938		SERIAL NO.			



J-U-B ENGINEERS, INC.

J-U-B ENGINEERS, INC.

305 S. Main Street

Unit 6

Palisade, CO 81526

Phone: 970.208.8508

www.jub.com

BID SET

REUSE OF DRAWINGS  
JUB SHALL RETAIN ALL COMMON LAW, STATUTORY, COPYRIGHT AND PATENT RIGHTS IN THIS DOCUMENT. NO PART OF THIS DOCUMENT SHALL BE REPRODUCED OR TRANSMITTED IN ANY FORM OR BY ANY MEANS, ELECTRONIC OR MECHANICAL, INCLUDING PHOTOCOPYING, RECORDING, OR BY ANY INFORMATION STORAGE AND RETRIEVAL SYSTEM, WITHOUT THE WRITTEN CONSENT OF JUB. ANY REUSE WITHOUT WRITTEN CONSENT BY JUB WILL BE AT CLIENT'S SOLE RISK AND WITHOUT LIABILITY OR LEGAL EXPOSURE TO JUB.

REVISION	NO.	DESCRIPTION	BY	DATE

TROYER AVENUE LIFT STATION REPLACEMENT  
TOWN OF PALISADE

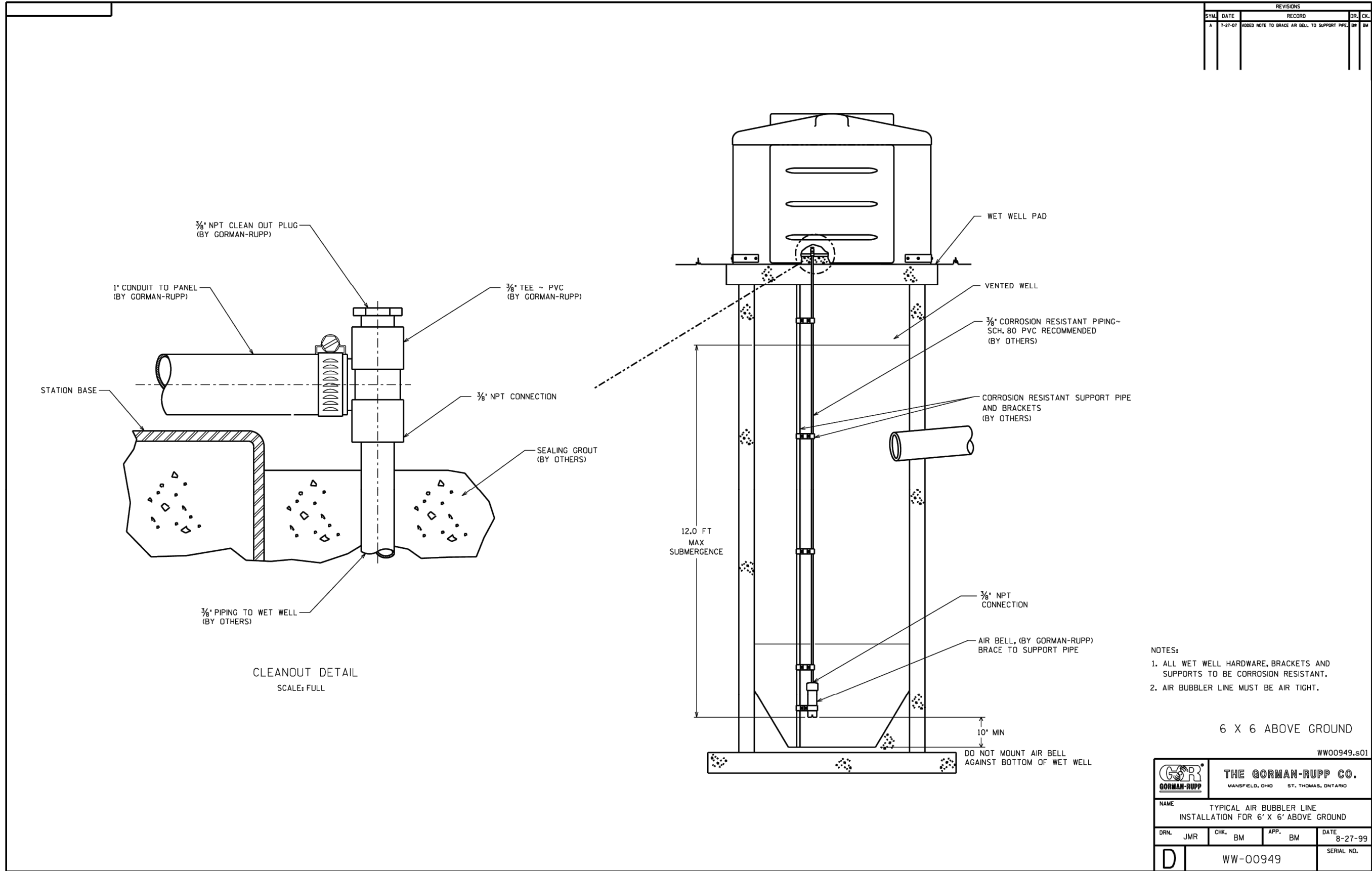
LIFT STATION

FILE: 81-23-003\_C-50X  
JUB PROJ. #: 81-23-003  
DRAWN BY: ---  
DESIGN BY: ---  
CHECKED BY: MWF  
AT FULL SIZE, IF NOT ONE INCH, SCALE ACCORDINGLY  
LAST UPDATED: 6/17/2024

SHEET NUMBER:

M-502

Plot Date: 9/19/2024 3:28 PM Plotted By: Matt Filla  
Date Created: 17/2024 18:14 PALISADE-GPUBLICPROJECTS\JUB\TOWN OF PALISADE\18-003-TOWN ENGINEER\TROYER LIFT STATION\DESIGN\DWG\81-23-003\_C-503.DWG



J-U-B ENGINEERS, INC.

J-U-B ENGINEERS, INC.  
305 S. Main Street  
Unit 6  
Palisade, CO 81526  
Phone: 970.208.8508  
www.jub.com

BID SET

REUSE OF DRAWINGS				
J-U-B SHALL RETAIN ALL COMMON LAW, STATUTORY, COPYRIGHT AND OTHER RIGHTS IN THIS DRAWING. NO PART OF THIS DRAWING SHALL BE REPRODUCED OR TRANSMITTED IN ANY FORM OR BY ANY MEANS, ELECTRONIC OR MECHANICAL, INCLUDING PHOTOCOPYING, RECORDING, OR BY ANY INFORMATION STORAGE AND RETRIEVAL SYSTEM, WITHOUT THE WRITTEN CONSENT OF J-U-B ENGINEERS, INC. ANY REUSE WITHOUT WRITTEN CONSENT BY J-U-B WILL BE AT CLIENT'S SOLE RISK AND WITHOUT LIABILITY OR LEGAL EXPOSURE TO J-U-B.				
REVISION				

TROYER AVENUE LIFT STATION REPLACEMENT  
TOWN OF PALISADE






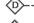








LIFT STATION





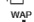

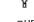







FILE: 81-23-003\_C-50X  
JUB PROJ. #: 81-23-003  
DRAWN BY: ---  
DESIGN BY: ---  
CHECKED BY: MWF  
ONE INCH  
AT FULL SIZE, IF NOT ONE  
INCH, SCALE ACCORDINGLY  
LAST UPDATED: 6/17/2024




SHEET NUMBER:

M-503

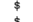
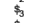
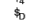
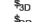

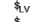
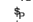
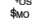
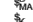



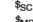


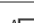

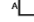






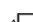
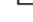
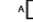




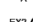



FIRE ALARM EQUIPMENT LEGEND	
	FIRE ALARM CONTROL PANEL
	FIRE ALARM PULL STATION
	FIRE ALARM HORN
	FIRE ALARM STROBE
	FIRE ALARM HORN/STROBE
	CEILING MOUNTED SPEAKER
	DUCT DETECTOR
	REMOTE LAMP
	SMOKE DETECTOR - PHOTOELECTRIC
	135° STANDARD HEAT DETECTOR
	PIR DETECTOR
	DOOR HOLD - MAGNETIC HOLD
	FLOW SWITCH
	TAMPER SWITCH

COMMUNICATION LEGEND	
	CLOCK ONLY
	CLOCK / PA SPEAKER WALL MOUNTED
	ROUND CEILING MOUNTED SPEAKER
	SQUARE SPEAKER
	INTERCOM PUSH TO CALL SWITCH
	WIRELESS ACCESS POINT ABOVE THE CEILING
	PROJECTOR
	ABOVE THE CEILING PROJECTOR CONNECTION
	WALL MOUNTED HDMI
	PLAIN DATA OUTLET
	PLAIN DATA OUTLET WITH MOUNTING HEIGHT
	COMBINATION DATA/TELEPHONE
	CEILING MOUNTED COMBINATION DATA/TELEPHONE
	TELEVISION OUTLET

SECURITY SYSTEM LEGEND	
	SECURITY CAMERA
	ADA DOOR OPERATOR PUSH BUTTON
	ELECTRIC DOOR STRIKE
	CARD READER FOR DOOR OPERATOR

LIGHTING LEGEND	
<b>NOTES:</b>	
SYMBOLS SHOWN ARE STANDARD. VARIATION AND/OR COMBINATIONS MAY BE USED ON THE PLANS. THIS LIST SHOWS STANDARD SYMBOLS AND ALL MAY NOT APPEAR ON THE PROJECT DRAWINGS; HOWEVER, WHENEVER THE SYMBOL ON THE PROJECT DRAWINGS OCCUR, THE ITEM SHALL BE PROVIDED AND INSTALLED.	
VARIATION AND/OR COMBINATION MAY BE USED ON THE PLANS.	
A NUMBER NEXT TO A RECEPTACLE OR DEVICE INDICATES A CIRCUIT NUMBER.	
AN UPPER CASE LETTER NEXT TO A SWITCH INDICATES THE FUNCTION OF THE SWITCH. A LOWER CASE LETTER INDICATES THE SWITCH CIRCUIT.	
AN UPPER CASE LETTER NEXT TO A LIGHT FIXTURE INDICATES THE TYPE OF FIXTURE. REFER TO THE LUMINAIRE SCHEDULE FOR FIXTURE SPECIFICATIONS. A LOWER CASE LETTER NEXT TO A LIGHT CORRESPONDS TO THE SWITCH DESIGNATION.	

SWITCHES	
	S SINGLE POLE SWITCH
	S2 TWO POLE SWITCH
	S3 THREE-WAY SWITCH
	S4 FOUR-WAY SWITCH
	S5 DIMMER SWITCH
	S6 3 WAY DIMMER SWITCH - (4D INDICATES A 4WAY DIMMER)
	S7 DOOR ACTIVATED SWITCH
	S8 WALL MOUNTED DUAL TECHNOLOGY MANUAL ON / AUTO OFF VACANCY SENSOR SWITCH
	S9 LOW VOLTAGE LIGHT SWITCH
	S10 MANUAL MOTOR STARTER
	S11 PILOT LIGHT SWITCH
	S12 AUTO ON / AUTO OFF LIGHT SWITCH
	S13 DUAL TECHNOLOGY MOTION / OCCUPANCY SENSOR LIGHT SWITCH
	S14 MANUAL ON / AUTO OFF DIMMING LIGHT SWITCH
	S15 KEY OPERATED LIGHT SWITCH
	S16 MANUAL ON - TIMED OFF LIGHT SWITCH
	S17 CEILING MOUNTED DUAL TECHNOLOGY OCCUPANCY SENSOR SWITCH
	S18 CEILING MOUNTED DUAL TECHNOLOGY MANUAL ON / AUTO OFF VACANCY SENSOR
	S19 CEILING MOUNTED DAYLIGHT HARVESTING SENSOR
	S20 SCENE CONTROL STATION
	S21 UNIT LIGHTING MANAGEMENT CONTROL STATION,










LIGHT FIXTURES	
	A1 1"x4" LED TROFFER OR DIRECT/INDIRECT TYPE FIXTURE GRID, FLANGE OR SURFACE MOUNTED
	A2 2"x4" LED TROFFER OR DIRECT/INDIRECT TYPE FIXTURE GRID, FLANGE OR SURFACE MOUNTED
	A3 2"x2" LED TROFFER OR DIRECT/INDIRECT TYPE FIXTURE GRID, FLANGE OR SURFACE MOUNTED
	A4 OPEN STRIP FIXTURE
	A5 WALL BRACKET LINEAR FIXTURE
	A6 WALL MOUNTED SCONCE LIGHT FIXTURE
	A7 RECESSED DOWNLIGHT CAN FIXTURE
	A8 SURFACE CEILING OR PENDANT MOUNTED FIXTURE
	A9 EX2 DOUBLE FACE EXIT SIGN, WALL AND CEILING MOUNTED
	A10 EX1 SINGLE FACE EXIT SIGN, WALL AND CEILING MOUNTED
	A11 EM WALL MOUNTED EMERGENCY LIGHT
	A12 EMR EMERGENCY EXTERIOR EGRESS FIXTURE




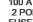


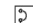
**GENERAL ELECTRICAL NOTES:**



















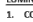
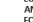
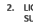
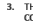
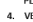
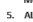
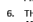
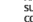
1. ALL ELECTRICAL WORK TO COMPLY WITH LATEST EDITION OF NEC, IECC AND ALL APPLICABLE GOVERNING CODES.
2. FIELD COORDINATION DURING CONSTRUCTION IS IMPERATIVE. CONTRACTORS BIDDING THIS WORK MUST MAKE REASONABLE ALLOWANCES FOR UNFORESEEN CONTINGENCIES.
3. ELECTRIC UTILITY TO ADVISE OWNER AND/OR THE ELECTRICAL ENGINEER PRIOR TO SERVICE MODIFICATION REQUIRING COST TO THE OWNER.

**WIRING:**

1. ALL WIRING IS SHOWN DIAGRAMMATICALLY ON DRAWING. FIELD VERIFY ALL CONDITIONS PRIOR TO ROUGH IN.
2. ALL CONDUITS AND CONVEYANCES SHALL BE CONCEALED. IN THE EVENT THAT A NEW DEVICE IS BEING INSTALLED IN AN EXISTING DRYWALL PARTITION, PROVIDE A CUT IN TYPE BOX AND FISH FLEXIBLE CONDUIT DOWN INSIDE THE WALL FROM ABOVE THE CEILING AND REPAIR THE DRYWALL AROUND THE CONDUIT. TRANSITION TO EMT ONCE ABOVE THE CEILING.
3. SIZES OF WIRE AND CABLES ARE BASED UPON COPPER CONDUCTORS, UNLESS OTHERWISE INDICATED. ALL CIRCUITS SHALL CONTAIN (2) #12 AWG WITH (1) #12 GND IN 1/2" CONDUIT UNLESS NOTED OTHERWISE.
4. ALL BRANCH CIRCUITS WITH HOME RUNS OVER 50 FEET, WILL BE SIZED ONE SIZE LARGER.
5. ALL PENETRATIONS IN OR THROUGH FIRE RATED PARTITIONS SHALL BE FIRE STOPPED IN SUCH A WAY THAT THE PENETRATION MATCHES THE FIRE RATING OF THE WALL.
6. THE ELECTRICAL CONTRACTOR IS RESPONSIBLE FOR ALL COORDINATION BETWEEN THE APPROPRIATE DISCIPLINES AND CONTRACTORS.
7. COORDINATE ALL DEVICE, FIXTURE AND HARDWARE COLOR SELECTIONS WITH THE ARCHITECT PRIOR TO MAKING SHOP DRAWING SUBMITTALS.
8. COORDINATE THE MOUNTING HEIGHTS OF ALL RECEPTACLES MOUNTED ABOVE COUNTERS, CASEWORK AND APPLIANCE RECEPTACLES WITH ARCHITECTURAL ELEVATIONS.
9. BRANCH CIRCUIT AND SPECIAL SYSTEMS WIRING FOR DEVICES ON WALLS IN FINISHED AREAS WHICH CANNOT BE CONCEALED SHALL BE INSTALLED IN SURFACE MOUNTED RACEWAY.
10. ALL EXPOSED CONDUITS, BOXES, ETC. IN ROOMS TO BE PAINTED SHALL BE PAINTED TO MATCH THE SURROUNDING SURFACE. EXPOSED CONDUITS, BOXES, ETC. ON THE EXTERIOR OF BUILDINGS SHALL BE PAINTED TO MATCH THE SURROUNDING SURFACE AS CLOSELY AS POSSIBLE.
11. THE CONTRACTOR IS RESPONSIBLE FOR PATCHING, PAINTING, REPAIRING OR REPLACEMENT OF ALL WALLS, CEILING OR OTHER BUILDING ELEMENTS WHICH ARE DISTURBED AS PART OF THE DEMOLITION AND/OR INSTALLATION OF ELECTRICAL WORK.
12. PROVIDE ELECTRICAL CONNECTION TO ALL FIRE, SMOKE, AND FIRE / SMOKE DAMPERS INCLUDING POWER AND FIRE ALARM. VERIFY EXACT SIZE AND FINAL LOCATION OF ALL DAMPERS WITH THE MECHANICAL CONTRACTOR. ALL ROOFTOP UNITS RATED AT MORE THAN 2000 CFM WILL BE OUTFITTED WITH A DUCT DETECTOR IN THE RETURN DUCT. ALL ROOFTOP UNITS RATED AT MORE THAN 15000 CFM WILL BE OUTFITTED WITH A DUCT DETECTOR IN BOTH THE SUPPLY AND RETURN DUCT AT ROOFTOP LEVEL AND IN THE RETURN DUCT AT EVERY LEVEL THAT IS SERVED. ELECTRICAL CONTRACTOR WILL PROVIDE A REMOTE TEST STATION AND ALL WIRING NECESSARY TO COMPLETE INSTALLATION.
13. REFER TO THE MECHANICAL SCHEDULE FOR ADDITIONAL REQUIREMENTS ASSOCIATED WITH PLUMBING AND HVAC EQUIPMENT AND OWNER/GENERAL CONTRACTOR FURNISHED EQUIPMENT.

ELECTRICAL EQUIPMENT LEGEND	
	BRANCH CIRCUIT PANEL BOARD
	TELEPHONE TERMINAL BOARD
	ELECTRIC MOTOR
	FUSED SAFETY SWITCH / DISCONNECT COMBINATION
	MOTOR STARTER
	CONTACTOR
	CIRCUITRY HOMERUN: PANEL LA - CIR. #7
	CONDUIT OR WIRE CONCEALED IN WALL/CLG. (SOLID LINE TYPE)
	CONDUIT OR WIRE UNDER FLOOR/UNDER GND. (CENTER LINE TYPE)

MAIN DISTRIBUTION GEAR	
	CIRCUIT BREAKER IN A PANEL BOARD
	PAD MOUNTED UTILITY TRANSFORMER
	FUSED DISCONNECT 100A = AMP RATING 2P = NUMBER OF POLES
	ELECTRICAL METER SHOWN ON ONE-LINE DIAGRAMS
	ELECTRICAL POWER PANEL WITH MAIN LUG OR MAIN BREAKER PPT= PANEL NAME 225A MLO = MAIN LUG OR BREAKER SIZE 120/208V = PANEL VOLTAGE 3PH, 4 WIRE = PANEL PHASE, DISTRIBUTION TYPE
	PPT 225A MCB 3PH, 4W
	PPT 225A MLO 120/208V 3PH, 4W

ELECTRICAL DEVICE LEGEND	
	CEILING JUNCTION BOX - SURFACE/FLUSH
	WALL JUNCTION BOX - SURFACE/FLUSH
	DUPLEX RECEPTACLE
	FLOOR MOUNTED RECEPTACLE
	SPLIT WIRED DUPLEX RECEPTACLE
	CEILING MOUNTED DUPLEX RECEPTACLE
	FLOOR MOUNTED FOURPLEX RECEPTACLE
	APPLIANCE RECEPTACLE - 3 WIRE
	DUPLEX RECEPTACLE
	FOURPLEX RECEPTACLE
	ABBREVIATIONS PERTAIN TO ALL DUPLEX AND FOURPLEX RECEPTACLES:
	AC ABOVE COUNTER
	AC GF ABOVE COUNTER - GROUND FAULT CIRCUIT INTERRUPTER
	AC USB ABOVE COUNTER WITH USB PORT
	AF GF ARC FAULT PROTECTED WITH USB PORT
	D DEDICATED RECEPTACLE
	D USB DEDICATED RECEPTACLE WITH USB PORT
	EM RECEPTACLE CIRCUITED TO THE EMERGENCY PANEL WITH RED COVER PLATE
	GF GROUND FAULT CIRCUIT INTERRUPTER
	GF WP WEATHER PROOF GROUND FAULT CIRCUIT INTERRUPTER
	PL PLUG LOAD
	PZ GENERAL PURPOSE WITH MOUNTING HEIGHT.
	ELECTRIC HAND DRYER
	THERMOSTAT
	OPEN/CLOSE/STOP PUSH BUTTON
	DRAWING KEY NOTES
	ROOM DESIGNATION

**LUMINAIRES:**

1. COORDINATE THE LOCATION OF ALL LIGHTING EQUIPMENT INCLUDING BUT NOT LIMITED TO THE LUMINAIRES, SWITCHES WITH THE ARCHITECTURAL, STRUCTURAL AND MECHANICAL DRAWINGS AND ALL OTHER TRADES AS REQUIRED. REFER TO THE ARCHITECTURAL REFLECTED CEILING PLANS FOR DIMENSIONAL LOCATION OF LIGHT FIXTURES.
2. LIGHTING FIXTURES SHALL BE SUPPORTED FROM THE STRUCTURE ABOVE AND SHALL NOT BE SUPPORTED FROM THE T-BAR CEILING GRID.
3. THE ELECTRICAL CONTRACTOR IS TO CONFIRM THE LIGHT FIXTURES ORDERED WILL BE COMPATIBLE WITH THE CEILING TYPES AS SHOWN ON THE ARCHITECTURAL REFLECTED CEILING PLANS. NOTIFY THE ENGINEER OF ANY DISCREPANCIES PRIOR TO ORDERING THE FIXTURES.
4. VERIFY LUMINAIRE MOUNTING REQUIREMENTS AND OVERALL HEIGHT OF ALL PENDANT MOUNTED FIXTURES PRIOR TO ORDERING.
5. ALL LIGHT FIXTURES NEED TO BE COMPATIBLE WITH THE SWITCHES AND CONTROLS BEING PROVIDED.
6. THE LIGHTING PACKAGE SHALL BE APPROVED BY BOTH THE ARCHITECT AND ENGINEER AS APPROVED EQUAL BEFORE BID. NO LIGHT FIXTURE SHALL BE ORDERED UNTIL THE LIGHT FIXTURE SUBMITTAL PACKAGE HAS BEEN APPROVED IN WRITING BY THE ARCHITECT, GENERAL CONTRACTOR AND ELECTRICAL ENGINEER.
7. COORDINATE LUMINAIRE MOUNTING REQUIREMENTS PRIOR TO PLACING ORDER.

**RESPONSIBLE DIVISION:**

UNLESS OTHERWISE INDICATED ALL HEATING, VENTILATING, AIR CONDITIONING, PLUMBING, AND OTHER MECHANICAL EQUIPMENT, MOTORS, AND CONTROLS SHALL BE FURNISHED, SET IN PLACE AND WIRED AS FOLLOWS:

EQUIPMENT	FURNISHED	SET	POWER WIRED	CONTROL WIRED
COMBINATION MAGNETIC MOTOR STARTERS, MAGNETIC MOTOR STARTERS, VFD'S AND CONTACTORS	23(1)	26	26(2)	23
FUSED AND UNFUSED DISCONNECT SWITCHES, THERMAL OVERLOAD SWITCHES AND HEATERS, MANUAL MOTOR STARTERS	26	26	26	-
MANUAL-OPERATING AND MULTI-SPEED SWITCHES	23	26	26	26
CONTROLS, RELAYS, TRANSFORMERS	23	23	26	23
THERMOSTATS (LOW VOLTAGE) AND TIME SWITCHES	23	23	26	23
THERMOSTATS (LINE VOLTAGE)	23	23	26	26
TEMPERATURE CONTROL PANELS	23	23	26	23
MOTOR AND SOLENOID VALVES, DAMPER MOTORS, PE & EP SWITCHES	23	23(2)	-	23(2)
PUSH-BUTTON STATIONS AND PILOT LIGHTS	23	23(2)	-	23(2)
HEATING, COOLING, VENTILATION AND AIR CONDITIONING CONTROLS	23	23	26	23
EXHAUST FAN SWITCHES	23	26	26	23(2)

**SUBSCRIPT FOOTNOTES:**

1. MOTOR STARTER TO INCLUDE CONTROL TRANSFORMER, HOA SWITCH, (1) NO AND (1) NC AUXILIARY CONTACT, AND "ON" AND "OFF" PILOT LIGHTS.
2. IF ITEM IS FOR LINE VOLTAGE, SET IN PLACE AND CONNECT UNDER DIVISION 26. WHERE FACTORY MOUNTED ON EQUIPMENT OR ATTACHED TO PIPING OR DUCTS AND USING LINE VOLTAGE FURNISH AND SET UNDER DIVISION 23, CONNECT UNDER DIVISION 26.

**ABBREVIATIONS:**

44" FINISHED FLOOR TO CENTER OF DEVICE	DIA DIAMETER	HP HORSEPOWER
A AMP	DIAG DIAGRAM	HR HOUR
A.D. ACCESS DOOR	DIFF DIFFERENTIAL	HT HEIGHT
AAV AIR ADMITTANCE VALVE	DISCH DISCHARGE	HTR HEATER
ABV ABOVE	DIV DIVISION	HWR HEATING WATER RETURN
AC AIR CONDITIONING UNIT	DN DOWN	HWS HEATING WATER SUPPLY
AC ABOVE COUNTER	DS DUCT SILENCER	HZ HEAT EXCHANGER
AD AREA DRAIN (SEE SYMBOLS)	DWG DRAWING	HZ HERTZ
A.F.C. ABOVE FINISHED CEILING	DX DIRECT EXPANSION	ID INSIDE DIAMETER
A.F.G. ABOVE FINISHED GRADE	EX EXISTING	IG ISOLATED GROUND
AC AMPERE INTERRUPTING CAPACITY	EA EXHAUST AIR GRILLER/REGISTER	IN INCHES
AFCI ARC FAULT CIRCUIT INTERRUPTERS	EAT ENTERING AIR TEMPERATURE	INV INVERT
ECG ECCENTRIC	ECC ELECTRICAL CONTRACTOR	JBOX JUNCTION BOX
EFF EFFICIENCY	ECG ECCENTRIC	K KELVIN
AHU AIR HANDLING UNIT	EFF EFFICIENCY	KW KILOWATT
ALUM ALUMINUM	EL ELEVATION	KVA KILLO VOLT - AMPS
AP ACCESS PANEL OR DOOR	ELEC ELECTRIC	L LENGTH
ATS AUTOMATIC TRANSFER SWITCH	ELEV ELEVATOR	LAT LEAVING AIR TEMPERATURE
AV AUDIO / VIDEO	EM EMERGENCY FUNCTION	LV LAVATORY
AVG AVERAGE	ENT ENTERING	LB POUND
AWG AMERICAN WIRE GAGE	EMT ELECTRIC METALLIC TUBE	LD LINEAR DIFFUSER
BAS BUILDING AUTOMATION SYSTEM	EQ EQUAL	LF LINEAR FEET
BB BASEBOARD	EQUIP EQUIPMENT	LN LINEAR
BD BACK DRAFT DAMPER	EQUIV EQUIVALENT	LQ LIQUID
BFP BACK FLOW PREVENTOR	ES END SWITCH	LM LUMEN
BL BOILER	ESP EXTERNAL STATIC PRESSURE	LRA LOCKED ROTOR AMPS
BLDG BUILDING	EX EXPANSION TANK	LV LOUVER
BLW BELOW	EW ELECTRIC WATER COOLER	LVS LEAVING
BOS BOTTOM OF BEAM	LWT LEAVING WATER TEMPERATURE	LVS LEAVING
BOD BOTTOM OF DUCT	MBH THOUSANDS OF BTU PER HOUR	LWT LEAVING WATER TEMPERATURE
BOP BOTTOM OF PIPE	MC MECHANICAL CONTRACTOR	MEH THOUSANDS OF BTU PER HOUR
BSMT BASEMENT	MCA MINIMUM CIRCUIT AMPACITY	MC SPECIFICATION
BTU BRITISH THERMAL UNIT	MCB MAIN CIRCUIT BREAKER	MC SQUARE
C CHILLER	MD MAIN DISTRIBUTION PANEL	MC STAINLESS STEEL
CAFCCI COMBINATION ARC FAULT CIRCUIT INTERRUPTERS	MED MEDIUM	MC SAFETY SHOWER
CAP CAPACITY	MFR MANUFACTURER	MC STANDARD
CB CIRCUIT BREAKER	TEMP TEMPERATURE	MC STL STEEL
CBV CIRCUIT BALANCING VALVE	TR TRANSFER GRILLE / REGISTER	MC SYS SYSTEM
CCT CORRELATED COLOR TEMPERATURE	TR TAMPER RESISTANT	MC TEMP TEMPERATURE
CKT CIRCUIT	TT TEMPERATURE TRANSMITTER	MC TTB TELECOMMUNICATIONS
CFH CUBIC FEET PER HOUR	TERMINAL BACKBOARD	MC TYP TYPICAL
CFM CUBIC FEET PER MINUTE	TX TRANSFORMER	MC UC UNDERCUT DOOR
CHWR CHILLED WATER RETURN	UNO UNLESS NOTED OTHERWISE	MC UH UNIT HEATER
CHWS CHILLED WATER SUPPLY	NEG NEGATIVE	MC UNOC UNOCCUPIED
CI CAST IRON	NOT IN CONTRACT	MC UR URINAL
CL CENTER LINE	NIGHT / SECURITY LIGHT - DO NOT SWITCH	MC V VOLTS
CLG CEILING	NO NORMALLY OPEN	MC VA VOLT AMPERE
CMU CONCRETE MASONRY UNIT	NOM NOMINAL	MC VAV VARIABLE AIR VOLUME UNIT
CO CLEAN OUT	NTS NOT TO SCALE	MC VFD VARIABLE FREQUENCY DRIVE
COL COLUMN	OA OUTSIDE AIR	MC VRF VARIABLE REFRIGERANT FLOW
COMP COMPRESSOR	OP OPPOSED BLADE DAMPER	MC VOLT VOLTAGE
CONC CONCRETE	OC ON CENTER	MC VTR VENT THROUGH ROOF
COND CONDENSATE	OCC OCCURRED	MC W WIDTH
CONN CONNECTION	OC OVER CURRENT PROTECTION	MC WATTS
CONT CONTRADICTION	OD OUTSIDE DIAMETER	MC W WITH
CONTR CONTRACTOR	OL OVERLOAD	MC WO WITHOUT
CRI COLOR RENDERING INDEX	ORD OVERFLOW ROOF DRAIN	MC WB WET BULB
CT COOLING TOWER	OZ OUNCE	MC WC WATER COLUMN
CT CURRENT TRANSFORMER	PBD PARALLEL BLADE DAMPER	MC WC WATER CLOSET
CU CONDENSING UNIT	PD PRESSURE DROP	MC WG WATER CAUSE
CU COPPER	PH PHASE	MC WP WEATHERPROOF
CUH CABINET UNIT HEATER	POS POSITIVE PRESSURE	MC WPU WEATHERPROOF IN USE
CVB CONSTANT VOLUME BOX	POS POINT OF SALES	MC WSR WITHSTAND RATING
CWR CONDENSER WATER RETURN	PRV PRESSURE REDUCING VALVE	MC XFMR TRANSFORMER
CWS CONDENSER WATER SUPPLY	PS PRESSURE SWITCH	
DB DRY BULB	PSI POUNDS PER SQUARE INCH	
DEPT DEPARTMENT	PT PRESSURE TRANSMITTER	
DF DRINKING FOUNTAIN		

**SUBSTITUTIONS:**

A. SUBSTITUTIONS, SUBSTITUTION OF SPECIFIED EQUIPMENT WILL BE ALLOWED THROUGH A PRIOR APPROVAL PROCESS INITIATED BY THE CONTRACTOR. CONTRACTOR SHALL SUBMIT INTENDED SUBSTITUTION AT LEAST FIVE DAYS PRIOR TO BID FOR APPROVAL FROM ENGINEER. SUBMITTAL SHALL INCLUDE CAPACITIES, DIMENSIONS AND OPERATING INSTRUCTIONS FOR EACH PIECE OF EQUIPMENT. SUBSTITUTION SHALL OCCUR AT NO COST TO THE OWNER. CONTRACTOR IS RESPONSIBLE FOR COORDINATION OF APPROVED SUBSTITUTION AND SHALL INCLUDE ALL COSTS ASSOCIATED WITH THE SUBSTITUTION INCLUDING STRUCTURAL MODIFICATIONS, SPACE LAYOUT AND REDESIGN COSTS. SEE ALSO DIVISION I GENERAL REQUIREMENTS.

**EXAMINATION OF SITE, DRAWINGS, SPECIFICATIONS:**

A. EXAMINE CAREFULLY THE SITE AND CONDITIONS OF THE SITE. PROVIDE ALL NECESSARY EQUIPMENT AND LABOR TO INSTALL A COMPLETE WORKING SYSTEM WITHIN THE SITE CONDITIONS.

B. EXAMINE THE DRAWINGS AND SPECIFICATIONS AND 5 DAYS PRIOR TO BIDDING REPORT ANY ERRORS, OMISSIONS, INCONSISTENCIES, AND CONFLICTS TO THE ENGINEER TO BE REMEDIED IN AN ADDENDUM TO THE PROJECT PRIOR TO BID TIME.

C. DRAWINGS ARE DIAGRAMMATIC AND CATALOG NUMBERS GIVEN ARE FOR REFERENCE ONLY. THE CONTRACTOR SHALL BE RESPONSIBLE FOR VERIFYING THE CAPACITY OF THE EQUIPMENT MEETS THE DRAWING REQUIREMENTS AND SHALL NOT DIMENSION FROM THE MECHANICAL, PLUMBING, OR PIPING DRAWINGS.

D. THE LATEST ADOPTED VERSIONS OF THE INTERNATIONAL BUILDING CODES SHALL BE USED AS REQUIRED. THIS WILL ALSO INCLUDE THE LATEST ADOPTED VERSIONS OF THE MECHANICAL, PLUMBING, AND ENERGY CONSERVATION CODES. ALL METHODS AND MATERIALS REQUIRED BY THESE CODES SHALL BE REQUIRED BY THESE SPECIFICATIONS UNLESS INDICATED OTHERWISE. OTHER APPLICABLE LOCAL CODES AND ORDINANCES SHALL BE AS REQUIRED AND IT SHALL BE THE CONTRACTOR'S RESPONSIBILITY TO BE KNOWLEDGEABLE OF THESE REQUIREMENTS.

E. WHERE INSTALLATION PROCEDURES OR ANY PART THEREOF ARE REQUIRED TO BE IN ACCORDANCE WITH THE RECOMMENDATIONS OF THE MANUFACTURER OF THE MATERIAL BEING INSTALLED, PRINTED COPIES OF THESE RECOMMENDATIONS SHALL BE FURNISHED TO THE ENGINEER PRIOR TO INSTALLATION. INSTALLATION OF THE ITEM WILL NOT BE ALLOWED TO PROCEED UNTIL THE RECOMMENDATIONS ARE RECEIVED. FAILURE TO FURNISH THESE RECOMMENDATIONS CAN BE CAUSE FOR REJECTION OF THE MATERIAL.

**P**





