



AGENDA
for the Board of Trustees
of the Town of Palisade, Colorado
341 W 7th Street (Palisade Civic Center BOARD ROOM)

July 22, 2025

6:00 pm Regular Meeting

A live stream of the meeting may be viewed at:

<https://us06web.zoom.us/j/3320075780>

Work Session to Follow
****OFF-SITE at Cameo Sport Shooting Complex****

- I. REGULAR MEETING CALLED TO ORDER AT 6:00 pm**
- II. PLEDGE OF ALLEGIANCE**
- III. ROLL CALL**
- IV. AGENDA ADOPTION**
- V. ANNOUNCEMENTS**
 - A. GET INVOLVED WITH OUR COMMUNITY! UPCOMING PUBLIC MEETINGS (Palisade Civic Center, 341 W 7th Street):**
 - 1. **Planning Commission** – Tuesday, August 5, 2025, at 6:00 pm
 - 2. **Board of Trustees**– Tuesday, August 12, 2025, at 6:00 pm
 - B. PALISADE PEACH DAYS – ICE CREAM SOCIAL will be in downtown Palisade on Thursday, August 7, 2025, from 5:30 pm – 8:00 pm.**
 - C. PALISADE PEACH DAYS – JUST PEACHY PARADE AND PEACHY 5K & 10K RUN will be Saturday, August 9, 2025. The 5k/10k Run begins at 8:30 am, with the parade to follow at 9:00 am. For more information or to sign up for the Just Peachy Run, visit <https://www.grandjunctionsports.org/justpeachy>**
 - D. PALISADE PEACH DAYS – PEACH FESTIVAL in Riverbend Park is on Saturday, August 16, 2025. Visit palisadepeachfest.com for a complete list of events and times.**
- VI. TOWN MANAGER REPORT**
- VII. CONSENT AGENDA**

The Consent Agenda is intended to allow the Board to spend its time on more complex items. These items are generally perceived as non-controversial and can be approved by a single motion. The

public or any Board Member may ask that an item be removed from the Consent Agenda for individual consideration.

A. Expenditures

- Approval of Bills from Various Town Funds – June 25, 2025 – July 8, 2025

B. Minutes

- Minutes from July 1, 2025, Special Board of Trustees Meeting
- Minutes from July 8, 2025, Regular Board of Trustees Meeting

VIII. NEW BUSINESS

A. Letter Regarding the Wildcat Loadout Facility Environmental Assessment

The Board of Trustees will consider directing the Mayor to sign and send a letter regarding the Wildcat Loadout Facility Environmental Assessment to the United States Department of the Interior Bureau of Land Management.

1. Staff Presentation
2. Board Discussion
3. Decision – Motion, Second, and Rollcall Vote to: Approve or deny directing the Mayor to sign and send a letter regarding the Wildcat Loadout Facility Environmental Assessment to the United States Department of the Interior Bureau of Land Management **as presented / as amended**.

IX. PUBLIC COMMENT

All those who wish to speak during public comment must sign up on the sheet provided outside the boardroom doors. Please keep comments to 3 MINUTES OR LESS and state your name and address. Neither the Board of Trustees nor staff will respond to comments at this time. The Board may direct staff to look into specific comments to bring back as an Agenda item at a future meeting; however, the Board reserves the right to clarify information from comments that are factually incorrect.

All emails sent to the Town Clerk for public comment will be forwarded to the Board of Trustees. Any member of the public who wishes to have a statement or email read into the Minutes is required to appear in person and make said statements to the Board directly.

X. COMMITTEE REPORTS

XI. ADJOURNMENT

XII. WORK SESSION ** OFF-SITE **

- A. Tour Cameo Sport Shooting Complex - *No official action for the Town of Palisade will be conducted during the work session.***



PALISADE BOARD OF TRUSTEES Staff Report

Meeting Date: July 22nd, 2025
Department: Police Department
Department Director: Chief of Police

Stats for June 2025:

In the month of June, we had 429 calls for service.

This is an increase of over 50% from last month.

Case Reports: 20 Supplement Reports: 13 Arrests: 4
141 traffic citations were issued this month.

Investigations:

- PPD investigations have been working diligently on multiple cases, including the Arson/Homicide in 2024, the shooting incident in 2024, and the ATM burglary in 2024. These remain active until final dispositions can be reached in each case.

Significant Events:

- The agency also continues to grow the foundation for operations with the talented staff we have. We are building policies and procedures to better handle and accommodate the needs of the town and agency.
- Palisade PD was recently awarded approximately \$ 4,300 in in-service grant training funds to continue building up equipment needs for annual in-service training. We will soon begin using these funds to purchase training items.
- The Colorado Bureau of Investigation provided the Police Department with 4 fingerprint readers to help in identifying subjects.

Code Compliance:

- Focus on building without permits, illegal short term vacation rentals, signs that do not meet the new sign code and yard maintenance. Next month, we will provide a reporting summary update on the program.

Message from the Chief:

I am grateful for the community support, and I am very proud of the men and women who work for the police department in sworn and non-sworn positions. The team is doing a great job and is instrumental to the overall success of all the services we are providing. I am pleased to report that the Bluegrass Festival and Lavender Festival, from a public safety standpoint, went exceptionally well. I credit the staff and community for working together to make the Town of Palisade a safe and welcoming place for all to enjoy. Summer has been bringing very hot days for the staff, so I am focused on promoting good hydration, sleep cycles, and teamwork to maintain the high standards we are building moving forward. My door is always open for questions, comments, or concerns regarding a great community.



PALISADE BOARD OF TRUSTEES

Meeting Date: July 22, 2025

Re: Consent Agenda

The Consent Agenda has been attached as a separate document for ease of reading.

Included in the consent agenda are:

A. Expenditures

- Approval of Bills from Various Town Funds – June 25, 2025 – July 8, 2025

B. Minutes

- Minutes from July 1, 2025, Special Board of Trustees Meeting
- Minutes from July 8, 2025, Regular Board of Trustees Meeting



175 E 3rd Street
P.O. Box 128
Palisade, CO 81526

Phone: (970) 464-5602
Fax: (970) 464-5609
palisade.colorado.gov

TOWN OF PALISADE, COLORADO

United States Department of the Interior
Bureau of Land Management
Price Field Office
120 South 600 West
Price, Utah 84501
showard@blm.gov
mhocanson@blm.gov
dkauffman@blm.gov

Re: Wildcat Loadout Facility Environmental Assessment

Dear Sirs and Madams:

The purpose of this letter is to address the lack of public process the Bureau of Land Management (the "Bureau" or "BLM") used to engage the public before releasing the Environmental Assessment ("EA") and Finding of No Significant Impact ("FONSI") for the Wildcat Loadout Facility Right-of-Way Amendment (the "Proposed Action") on July 3, 2025.

As a local government, the Town of Palisade relies on the procedural protections in place under the National Environmental Policy Act ("NEPA") to inform itself and its residents of projects that may impact quality of life in the Town, Town property and infrastructure, and other municipal interests that may be impacted by such proposals. To demonstrate this point, the Town Board of Trustees only held a single regular meeting between when the Proposed Action was noticed on June 17, 2025 and when it was approved on July 3, 2025. While BLM did not solicit public comment on the EA, the two weeks between notice and decisions did not even provide us with an opportunity to digest and review how this project may impact a small town through which the Union Pacific mainline runs, located on the banks of western Colorado's most precious resource – the Colorado River. The Bureau's decision deprives our community of the important task of assessing and commenting on if and how significant additional oil train traffic through our town will impact our community. Approving an EA with no public input sets a dangerous precedent that is at odds with the values of transparency and public trust that our town holds dear and itself follows when reviewing and rendering decisions on proposals under our jurisdiction.

Courts have consistently emphasized the importance of involving the public in the decision-making process regarding decisions that impact the environment. The Bureau, "when preparing an EA, must provide the public with sufficient environmental information, considered in the totality of circumstances, to permit members of the public to weigh in with their views and thus inform the

agency decision-making process.”¹ To adequately involve the public, “the participation period offered for comment must be sufficiently long to permit members of the public to weigh in on the decision in an informed manner.”² NEPA may provide the Bureau discretion in how to involve the public; however, courts have held that providing previous opportunities for public involvement are insufficient if the federal agency subsequently fails to provide a public comment period prior to publishing the final NEPA documents.³ Additionally, an agency’s own conclusion that agency action would not significantly affect the environment “cannot itself prove that there is no objective controversy regarding the subject matter.”⁴

These examples support “the Supreme Court’s admonition that the purpose of ‘the broad dissemination of information mandated by NEPA’ is to ‘permit[] the public and other government agencies to react to the effects of a proposed action at a meaningful time,’ and not ‘after it is too late to correct.’”⁵ NEPA provides procedural safeguards in the decision-making process surrounding the environment and yet, such “‘procedural’ injury is tied to a substantive ‘harm to the environment’ – ‘the harm consists of added risk to the environment that takes place when governmental decisionmakers make up their minds without having before them an analysis (with public comment) of the likely effects of their decision on the environment.’”⁶

In preparing the July 7, 2025, EA for the Proposed Action, the Bureau failed to satisfy NEPA’s public involvement requirements. The public interest in this project is strong, as evidenced by the submittal of several letters of interest following the BLM’s posting of the Proposal on June 5, 2023.⁷ Among the public interest submittals were multiple requests for the agency to include a public comment period.⁸ NEPA requires providing the public sufficient information and time to weigh in on a decision in an informed manner. The Bureau’s conclusion that the Proposal will not significantly affect the quality of the human environment is based on its own assessment and does not prove that there is no objective controversy regarding the subject matter of the Proposal. The publication of the EA on an accelerated timeline disregards the Supreme Court’s directive to allow the public to react to the effects of a proposed action at a *meaningful* time and not after it is too late to correct. The Bureau’s failure to provide any public comment period over the past two years demonstrates that the release of the EA falls woefully short of NEPA’s public participation requirements.

Further, the CEQ’s authorization to use alternative process in response to EO 14156 cannot unilaterally discard decades of established regulatory and case law safeguarding NEPA’s public involvement requirements. Because the Bureau entirely neglected to involve the public in the EA publication for the Proposal, it could not have completed a thorough analysis sufficient to satisfy NEPA’s procedural requirements, and as noted above, such procedural injury is linked to a

¹ [Mont. Wildlife Fedn v. Haaland](#), 127 F.4th 1 (9th Cir. 2025) (quoting *Bering Strait Citizens for Responsible Resource Development v. U.S. Army Corps of Engineers*, 524 F.3d 938, 953 (9th Cir. 2008)).

² *Id.* at 38.

³ See [Brotsky v. United States NRC](#), 704 F.3d 113, 121 (2d Cir. 2013).

⁴ *Id.* at 123.

⁵ *Id.* at 123 (quoting [Marsh v. Or. Natural Res. Council](#), 490 U.S. 360, 371, 109 S. Ct. 1851, 104 L. Ed. 2d 377 (1989)).

⁶ [Citizens for Better Forestry v. United States Dep’t of Agric.](#), 341 F.3d 961, 970 (9th Cir. 2003).

⁷ U.S. Dep’t of the Interior, Bureau of Land Mgmt., Environmental Assessment for Wildcat Loadout Facility Right-of-Way Amendment (DOI-BLM-UT-2025-0015-EA, July 3, 2025), https://eplanning.blm.gov/public_projects/2039088/200657441/20137832/251037812/Final%20Final%20Wildcat%20EA%207.3.25.pdf, at § 4.1.

⁸ *Id.*

substantive harm to the environment resulting from the agency's failure to include public comment in its decision-making process.

Alternatively, if the Bureau had utilized NEPA's procedural safeguards of involving the public, the process would have revealed that multiple stakeholders, including the communities endorsing this letter, have interests at stake that are impacted by the Proposal. The Bureau's dismissal of certain alternatives to the EA, including the argument that train transport and hazardous materials transportation are out of the scope of the agency's consideration, is evasive and conclusory given that the Proposal as approved would inevitably result in such train and hazardous materials transportation directly affecting the public in the Town of Palisade.

We call on the Bureau to vacate its decision to approve the Proposed Action and provide a meaningful opportunity for public involvement with an adequate public comment period as required by NEPA.

TOWN OF PALISADE, COLORADO

By: _____
Greg Mikolai, Mayor

ATTEST:

Keli Frasier, CMC
Town Clerk

Cameo Shooting Sports and Education Complex Proposal

Colorado Parks and Wildlife

711 Independent Avenue

Grand Junction CO 81505

April 2012



www.wildlife.state.co.us

www.parks.state.co.us

Executive Summary

Colorado Parks and Wildlife proposes to build a first rate education and shooting facility on lands currently owned by Xcel Energy and Snowcap Coal Company. This facility would help meet the ever growing need for clean, safe, and fun places to shoot, and would draw users from all over the region and the nation. In addition to the recreational benefits, Colorado Parks and Wildlife hopes to use this facility to help meet its education and outreach goals, and to inspire the next generation of conservationists.

Agency Description and Vision

The mission of the Colorado Division of Parks and Wildlife is to perpetuate the wildlife resources of the state, to provide a quality state park system, and to provide enjoyable outdoor recreation opportunities including hunting, angling, and wildlife viewing that educate and inspire current and future generations to serve as active stewards of Colorado's natural resources.

Colorado Parks and Wildlife manages Colorado's 960 species of wildlife, more than 330 state wildlife areas, 43 state parks, and a host of associated recreational programs. The natural resources managed by Colorado Parks and Wildlife generate an estimated annual impact of \$4.7 billion in economic activity in the state. Colorado's State Parks consistently attract more than 12 million visitors a year, and the state's 1.6 million licensed hunters and anglers spend 12.7 million days a year in the field.

Colorado Parks and Wildlife has evolved and adapted to overcome a myriad of challenges during the 135 years since the state's wildlife agency was first created in 1877. Today, Colorado Parks and Wildlife is an agency with more than 900 employees, and an annual budget of nearly \$200 million. As an enterprise agency Parks and Wildlife does not receive, and is not dependent on revenue from the state's general fund. Colorado Parks and Wildlife is a national leader in research, wildlife management, outdoor recreation, law enforcement, education, and habitat protection. Colorado Parks and Wildlife will continue to adaptively manage the public resources in its trust so that Colorado's residents and visitors can continue to enjoy them for the next 135 years.

Market

The shooting sports are a vibrant and growing sector in the US economy. Even during the recent recession the firearms industry continued to grow, with a nationwide economic impact of \$27.8 billion in 2009, supporting 183,000 jobs in the same year. Today more than one million youth participate annually in competitive shooting contests. The NRA sanctions more than 10,000 shooting tournaments and sponsors over 50 national championships every year. Sporting clays, one of the fastest growing shooting sports, now boasts more than three million participants annually.

Several other states have built shooting and education complexes similar in scope to the proposed Cameo project. The Ben Avery Shooting Facility, operated by the Arizona Department of Game and Fish, first opened in 1960, and has become a world renowned destination for shooters. The facility has continued to grow since it first opened, and has led to significant economic development in the surrounding area. (www.azgfd.gov/basf) The NRA's Whittington Center in New Mexico opened its doors in 1973, and hosts a variety of competitions annually (<http://www.nrawc.org/>).

Mesa County, Colorado is home to nearly 150,000 people, and is the most populous area on Colorado's Western Slope. Mesa County is roughly equidistant from the major metropolitan areas of Denver and Salt Lake City. The area is served by the Grand Junction Regional Airport, which has daily flights from five airlines. Additional access to the area from Interstate 70 and major rail lines help to make Mesa County a destination for tourism and business.

While not as populous as some areas, Mesa county is home to a large and active community of sportsmen and shooters, which is one of the reasons that Cabela's was able to open a thriving retail outlet in the community during the peak of the recent recession. The county consistently hosts Colorado's largest banquets put on by national conservation organizations like Ducks Unlimited and the National Wild Turkey Federation. The Rocky Mountain Elk Foundation banquet held in Mesa County is consistently the largest event for that organization held anywhere in the nation.

Currently in Colorado there are no education and shooting complexes similar in scope to the one being proposed for this location. In Mesa county, and the surrounding area there are no indoor shooting ranges open to the general public. Colorado Parks and Wildlife operates an indoor range for their hunter education classes in Grand Junction, and this range also gets some use by organizations teaching carry and conceal and personal protection classes. Colorado Parks and Wildlife manages a 300 yard rifle range at the Plateau Creek State Wildlife Area, and there are small outdoor rifle and pistol ranges on BLM lands near the Grand Junction Airport. The Orchard Mesa Gun Club and the Grand Junction Trap Club south of Grand Junction also provide shooting opportunities in the area. In the project area there are a large number of people who engage in dispersed shooting on BLM and Forest Service lands.

Proposed Action

Colorado Parks and Wildlife proposes to develop a first class education and shooting complex on lands currently owned by Xcel Energy and Snowcap Coal Company. Colorado Parks and Wildlife would work to acquire these private lands, and would work with the current landowners to avoid inappropriate development near sensitive areas like transmission lines, substations and ash piles.

The educational component of the facility would include indoor and outdoor classrooms and ranges, and would be utilized by hunter education instructors, NRA instructors, law enforcement and military personnel, school district staff, and many others. In addition to instruction on hunting and shooting sports the facilities could also be used for instruction in environmental education and other forms of outdoor recreation.

The complex would include a variety of pistol and rifle ranges. Ranges would be built large enough to accommodate competitive events in addition to traditional target practice by the public. In addition to traditional target ranges, some ranges would be built to accommodate popular action shoots including cowboy action shoots. Ranges would be built for the full range of shotgun shooting sports, including trap, skeet, and sporting clays. In addition to traditional archery target ranges, courses with 3D targets would be developed.

The Cameo location provides several advantages for this type of development when compared to other sites being considered. The location is easily accessed from Grand Junction via Interstate 70, and previous development on the site means that some amenities like power, water, and roads are already developed on the site. The location in the Debeque Canyon and the presence of the Colorado River, Rocky Mountain Bighorn Sheep, Wild Horses, and a variety of plant communities nearby provides unique opportunities for education, recreation, and outreach. Further, the prior use of the property for power generation and coal extraction would provide opportunities for education about energy topics, and would provide a showcase for reclamation. Additionally the Cameo location is in close proximity to the Island Acres section of the James M. Robb Colorado River State Park. The nearby state park would allow for expanded recreational and educational opportunities to be added to the proposed development. The state park has a number of ponds that are routinely stocked with catchable trout, allowing a variety of angling education topics to be incorporated. The state park also has a developed campground that would be able to accommodate users of the Cameo complex wanting to camp nearby. Camping opportunities may need to be expanded as the Cameo complex is developed.

Colorado Parks and Wildlife would work with a professional firm to design the complex to meet the needs of the agency, its partners and constituents, and of the current landowners. After acquiring the land Parks and Wildlife would develop the area in a phased program over a period of several years. Parks and Wildlife would look for a private concessionaire to run many aspects of the operation and maintenance of the complex. The development of the proposed project would constitute a significant investment by Colorado Parks and Wildlife, and as such the use of all ranges and facilities would be supervised to protect that investment, and to prevent damage to infrastructure and property both on project lands and on neighboring properties.

Colorado Parks and Wildlife has already begun to reach out to partners and affected parties, and as this proposal progresses will continue to work with interested parties to build support for the proposal, and to reduce or eliminate conflicts as they are identified. Colorado Parks and Wildlife has received statements of support for its proposal from numerous conservation organizations like the Colorado Mule Deer Association. Parks and Wildlife has also received support of its proposal from various elected officials from the Town of Palisade, City of Grand Junction, and Mesa County, and will continue to partner with local governments to build broad support for the proposed development. Parks and Wildlife has talked with staff from Mesa County about the need to receive a special use permit from the county, or to have the land rezoned to meet the proposed use. Colorado Parks and Wildlife is a division of Colorado's Department of Natural Resources, and the action outlined in this proposal has support from our parent agency, and its Executive Director, Mike King.

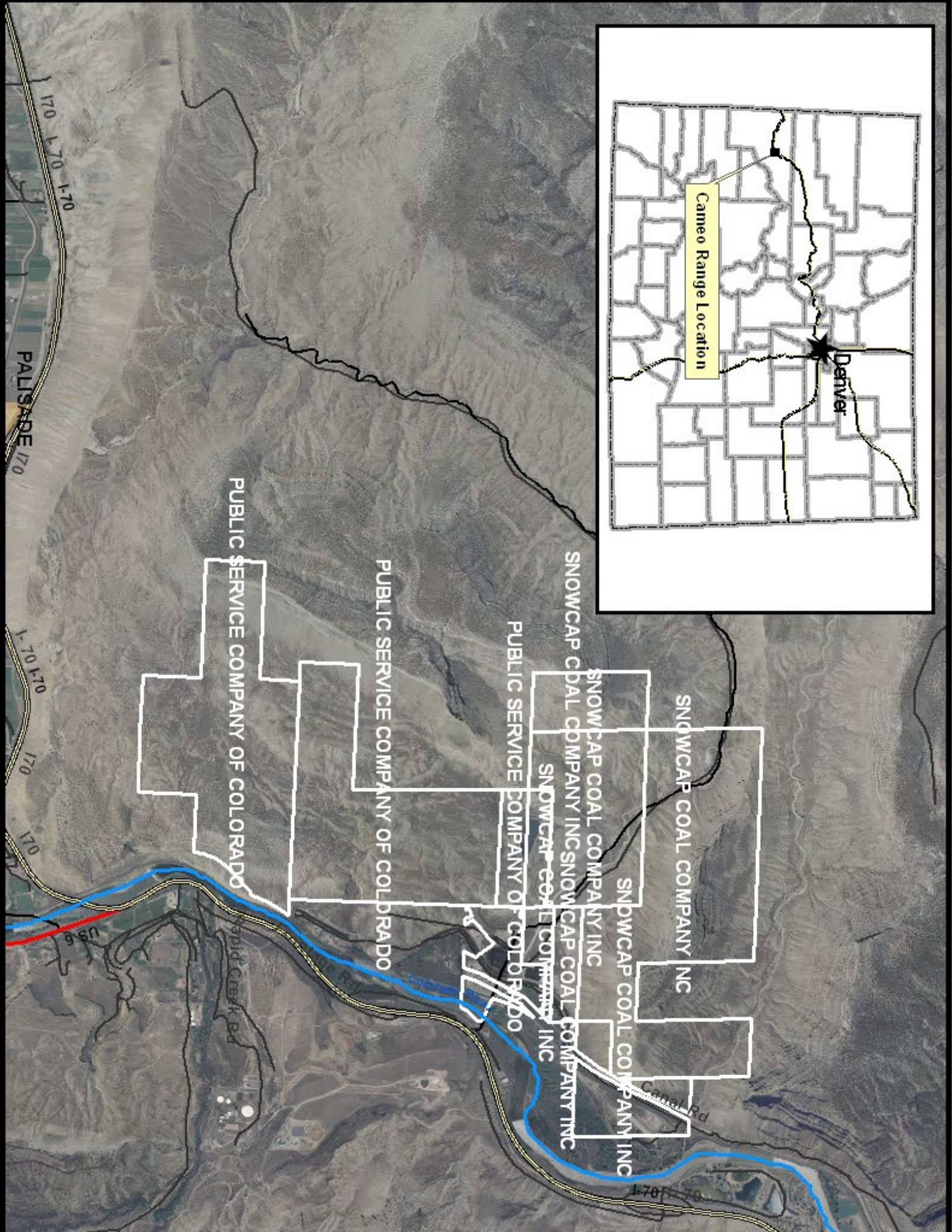
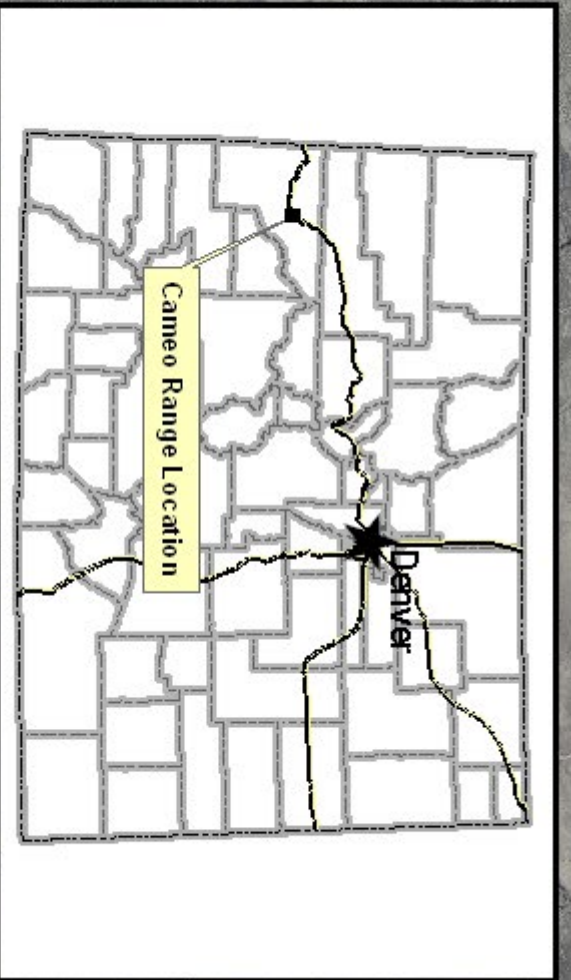
Marketing Strategy

Colorado Parks and Wildlife will work with its marketing staff in Denver to determine the best course of action to market its new education and shooting sports complex. In addition to marketing to the potential users that live in close proximity to the complex, Parks and Wildlife anticipates that this facility will draw users from the nearby metropolitan areas of Denver and Salt Lake City. Further some aspects of the new facility will likely draw users from all over the nation. Sporting Clays, 3D archery ranges, and competitive shoots have the potential to draw users from all over the country. While there are a myriad of competitive shoots organized every year, there are a fairly small number of companies and groups that plan and run these competitions, making it possible to target these organizations and encourage the use of the Cameo facility.

One of the principle reasons that this proposal is appealing to local governments and businesses is its potential to bring more people to the Grand Valley and that associated economic impact. Colorado Parks and Wildlife would work with local businesses, governments, and chambers of commerce to coordinate the marketing of its new facility with existing campaigns to promote the region.

Project Area

The map on the following page depicts the general project area, as well as the parcels owned by Snowcap Coal Company and Xcel Energy. The data layer used to generate the map is not current, and does not depict the recent purchase of Snowcap Coal property by Halliburton.



Appendix

Wildlife Strategic Plan

<http://wildlife.state.co.us/SiteCollectionDocuments/DOW/AboutDow/2010-2020StrategicPlan.pdf>

Parks Strategic Plan

<http://www.parks.state.co.us/SiteCollectionImages/parks/Planning/Strategic%20Plan/Final%20Plan%20102810.pdf>

Wildlife Annual Reports

<http://wildlife.state.co.us/About/Reports/Pages/AnnualReportsHome.aspx>

Parks Annual Reports

<http://www.parks.state.co.us/About/Pages/annualreport.aspx>



CAMEO SPORT SHOOTING COMPLEX



Project Scope and Community Benefits



Areas of Focus

1. Project Response to the needs – What does this complex solve for our communities?
2. Why should we do this? – What benefits does it bring?
3. Letters of Support – Demonstration of local, regional and state support
4. What are we proposing to do? – Scope and details of the proposed project
5. Who will use this facility? – lists the type of users both local and visitors
6. Is this a real potential? – Efforts and direction of the Division of Parks and Wildlife
7. Outline of next steps – With your involvement this will happen as the site is ready
8. Optional Requests – what other ways might we consider for working together?
9. Resources and References – web sites for more info



Project Response to Needs

What does this complex solve for our communities?

Solving the lack of adequate shooting facilities provides many benefits:



- Police training and certification will be able to be better maintained by availability of a range to train and certify. Tactical training would be possible for the first time in our area.
- In Western Colorado gun sales are at an all-time high with a great percentage of these buyers being women. This facility would provide the opportunity for education of the general public in safe use of their weapons, whether firearms or archery related.
- Locally there are competitive, youth shooting programs but currently there is an eight year waiting list for some programs. This is due to lack of available range facilities. The proposed complex would allow education and training for our youth to expand to fit the demand.
- Our District 51 school system programs would be able to use this facility for learning such as with their "Outdoor Wilderness Lab". Parents and their children would have a safe, managed facility to participate in recreational shooting.



- Competitive sporting events in Sporting Clays, Skeet, Archery, Cowboys shoots, pistol and rifle venues would draw people nationally as well as internationally.
- Allows hunters an opportunity to adequately site-in their rifles prior to hunting, in order to assure that animals are not needlessly injured when hunted.
- Allows shot gunners and archers to hone their skill for their hunting venues as well.

- Provides for a fun recreational alternative for visitors to our area which is managed and supervised.
- Allows for better decision making for shoppers purchasing a weapon if they can try it out as a demo at the range before buying. Matching the firearm to the person allows for much safer use.



- Having a focused area to enjoy these sports will make surrounding hiking and biking trails safer and more enjoyable for those sports enthusiasts by focusing public shooting in this area.

Solving the need for some shoulder season recreational activities also aids much of the Community:

- Shooting sports have a total economic impact of \$27.8 billion dollars in the US economy and sportsmen contribute \$2.9 billion every year for conservation and add \$4.95 billion in annual federal tax revenue.
- By inviting this economic group to our community we can generate business year-round and specifically increase business in our slow shoulder and winter seasons.
- Increased visitation betters the potential for our mom and pop stores to stay in business, aid our hotels and restaurants and allows for increase in local sales which revenues support local governmental services.
- We would hope to co-locate some small, sports manufacturing on this same site allowing users to order pre-made or custom equipment as well as get necessary repairs for safe operation.
- This would create replacement jobs for those lost from the decommissioning of the Cameo Power Plant.



- With a more vibrant community, Palisade is seeking more residential growth, more tax base (and more utility customers). Roofs and retail sales allow the Town the revenue to fix streets, pay police officers etc.
- We anticipate that this facility could draw up to 50,000 people per year. By staging competitive events strategically we could greatly increase revenue to our local businesses.
- Spin-off businesses that serve these sports could grow. Use would create demand for more bows, arrows, targets, shells, accessories, custom firearms, upgrades to existing equipment, classes, training, custom instruction, camping supplies, fishing supplies, rafting, etc....
- The adjacent State Park is only full a few weekends out of the year at this point. This facility would greatly augment the number of people using that park and all of its amenities. This Park currently has 73 campsites available.



Cameo Outdoor Education and Shooting Complex Details

Project Owners: Colorado Parks and Wildlife proposes to develop a first class education and shooting complex.

This would be a controlled access and managed facility. We would provide parking, check-in, bath room facilities as well as some retail display and purchase. Rentals may also be available for individuals with proper security and identification.



Indoor Facilities:

Pro Shop: Pay station and check-in for facility use. Sale of ammunition, arrows, support supplies. There will also be bathrooms, a waiting area, video demo area and a work room for staff use. The shop may also include display cases, demo rentals, and memorabilia.

Indoor Classrooms: Educational component of the facility used for a wide variety of citizen and law enforcement classes including hunter education instructors, NRA instructors, military personnel, school district staff, and many others. In addition to instruction on hunting and shooting sports the facilities could also be used for instruction in environmental education and other forms of outdoor living/recreation.



Outdoor Facilities:

The majority of land area would be used for the following wide variety of educational and shooting venues:

Public Use Ranges

Main Range - This range is used by the general public for recreational shooting. It has 67 positions at distances from 5 yards to 200 yards. All types of firearms may be used with some exceptions as posted.

Clay Target Center - The Clay Target Center has the traditional games of trap and skeet, as well as sporting clays. The Clay Target Center will be separately staffed to schedule and manage shotgunners.



Archery Fixed Distance Practice Range - This is a public use range that provides opportunity for archers to practice at fixed distances from 10 to 65 yards.

Archery Broadhead walking Trail Range - This public range is designed to provide archers

opportunity to practice shooting broadhead-hunting arrows at various fixed distances.

Archery Field Range - This public range provides archers the opportunity to practice shooting at bulls-eye targets at fixed distances.

Archery Animal Range - This public range provides archers the opportunity to practice shooting at animal silhouette targets at fixed distances.

Archery Upper Hill Animal Course - This public range provides archers the opportunity to practice their hunting skills by shooting at animal silhouette targets at a variety of distances and angles.

Archery Lower Hill Range - This public range provides archers the opportunity to practice their hunting skills by shooting at animal silhouette targets at a variety of distances and angles.



Specialty Ranges - User Group Agreement May be Required

Smallbore Range - This range is a multi-purpose range with a maximum distance of 100 yards. This range is used primarily for rifle and carbine competition as well as training, however, it can be used with certain restrictions/precautions for shotgun and pistol.

High Power Range - This range has distances of 100 to 1000 yards, and is used for competitive shooting in high power rifle, as well as Muzzleloader. Police departments, and our military also use it for training purposes.

Rifle Silhouette Range - This range has a maximum distance of 500 meters, and is discipline specific to metallic target shooting.

Benchrest Range - This range has a maximum distance of 300 yards, and although it is designed for benchrest competitive shooting it can be used for other types of shooting disciplines approved by a range master.



Pistol Range 1 - This range has a maximum distance of 25 yards, and is primarily used for slow fire pistol shooting at paper targets.

Pistol Range 2 - This range has a maximum distance of 25 yards, and is primarily used for slow fire pistol shooting at paper targets.

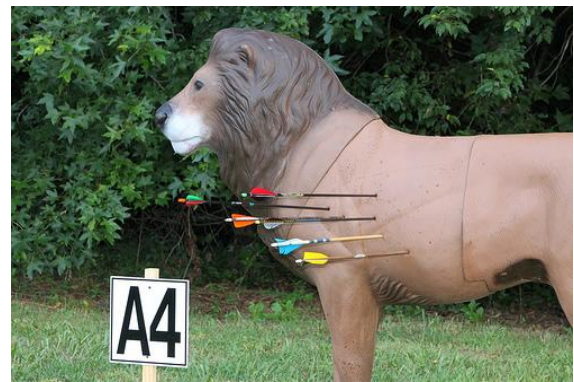
Pistol Silhouette Range - This range is a 200-meter metallic target range, restricted to pistol silhouette shooting discipline.

2700 Range - This range is a 100 yard Range used for rifle and carbine shooting

FITA Archery Range - This range is an Olympic style 100-yard range used by competitive clubs, training of our youth, and host State, National and International Olympic shooting events.

Broadhead-Cross Bow-FITA Range - This public archery range is a multi-purpose range that includes opportunity for broadhead, crossbow and FITA style practice at fixed distances.

In addition to traditional target ranges, some ranges would be built to accommodate popular action shoots including cowboy action shoots.



Site Location/ Benefits

The Cameo location provides several advantages for this type of development when compared to other sites being considered:

Access

The location is easily accessed from Grand Junction via Interstate 70, and previous development on the site means that some amenities like power, water, and roads are already developed on the site.



Education Opportunities

The location in the Debeque Canyon and the presence of the Colorado River, Rocky Mountain Bighorn Sheep, Wild Horses, and a variety of plant communities nearby provides unique opportunities for education, recreation, and outreach. Further, the prior use of the property for power generation and coal extraction would provide opportunities for education about energy topics, and would provide a showcase for reclamation.

Expanded Recreational Opportunities

Additionally the Cameo location is in close proximity to the Island Acres section of the James M. Robb Colorado River State Park. The nearby state park would allow for expanded recreational and educational opportunities to be added to the proposed development. The state park has a number of ponds that are routinely stocked with catchable trout, allowing a variety of angling education topics to be incorporated.

Existing Camping

The state park also has a developed campground that would be able to accommodate users of the Cameo complex wanting to camp nearby. Camping opportunities may need to be expanded as the Cameo complex is developed.

Design Methodology

Colorado Parks and Wildlife would work with a professional firm to design the complex to meet the needs of the agency, its partners and constituents, and of the current landowners. After acquiring the land Parks and Wildlife would develop the area in a phased program over a period of several years. Parks and Wildlife would look for a private concessionaire to run many aspects of the operation and maintenance of the complex. The development of the proposed project would constitute a significant investment by CPW, and as such the use of all ranges and facilities would be supervised to protect that investment, and to prevent damage to infrastructure and property both on project lands and on neighboring properties.

State of Colorado Project Development

Colorado Parks and Wildlife is a division of Colorado's Department of Natural Resources, and the action outlined in this proposal has support from our parent agency, and its Executive Director, Mike King.



Colorado Parks and Wildlife has already begun to reach out to partners and affected parties, and as this proposal progresses will continue to work with interested parties to build support for the proposal, and to reduce or eliminate conflicts as they are identified.

Protection of Existing Infrastructure

The Colorado Parks and Wildlife recognize the challenges of rehabilitation and re-use of this industrial site. We also acknowledge the critical infrastructure that will remain on this site and in this area. A prime design consideration for this facility will be the protection of all utility infrastructure remaining in this area.

We also recognize Xcel Energy's needs to maintain ownership of certain portions of the site for long-term monitoring and will work to accommodate that as needed.

Having this year-round use on this site will increase security of the Xcel Energy infrastructure by having eyes on this area as well as a regular use by law enforcement.



Overall Benefits to Western Colorado

Western Colorado and specifically the Grand valley has a **long history of outdoor activity** and still embraces its links to “the West”. Visitors come from all over the world to understand more about our slice of America’s history.

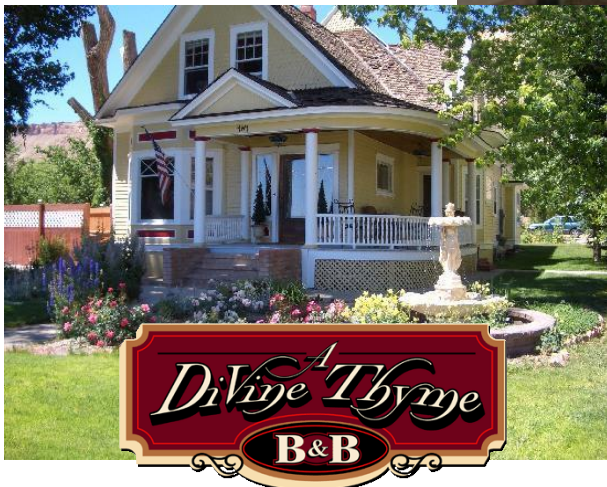
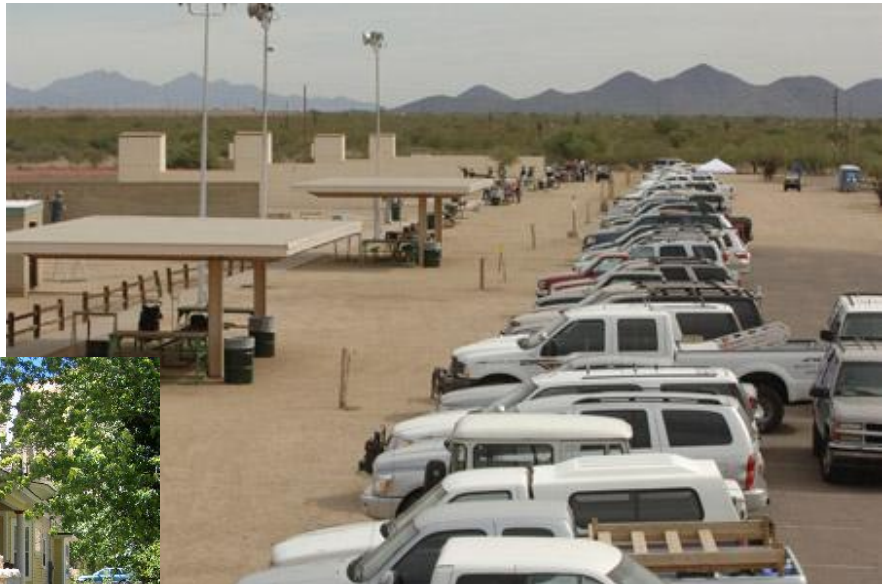
Our **connection to the land remains strong** with hunting, fishing, hiking enjoyed by residents and visitors alike.

There is evidence that humans have lived in this valley for over **ten thousand years**. The education of our youth to the lifestyles and history of these peoples is critical to the understanding of **how we survive in the future**. Both Archery as well as the shooting sports are a part of that heritage and ability to understand the realities of the past.

Getting our youth either individually or as a families to engage in these sports and activities which **re-enforce our connection with the outdoors**, environmental concerns, stewardship of the land and knowledge of self-reliance is sorely needed today.

This complex will be a **multi-use, managed facility** which will allow those opportunities for education, sport, practice and regional competitions. It will be a value-added amenity not only for our citizens but for our visitors and guests as well.

Clearly this increased interest and activity on our area will assist in the support of our tourist focused activities. In addition it will help the existing agri-businesses and orchards thrive. **Orchards, Vineyards, Wineries, Farmers markets and festivals** will all see benefit.



Who Will Use This Facility

Law Enforcement/ Military/ National Guard

Colorado Parks and Wildlife
Town of Palisade Police Department
City of Grand Junction Police
Fruita Police
Mesa County Sheriff
Colorado State Patrol
Collbran Marshal
DeBeque Marshal
NSF Officers
District 51 School Safety officers
U.S. Bureau of Land
management
U.S. Forest Service
Colorado Bureau of
Investigations
FBI / Immigration/ IRS



Leadership Training

Montrose County Achievement Program
Ouray County Achievement Program
Mesa County Achievement Program
Delta County Achievement Program
Colorado 4-H Leader Forum
Ambassador Training Program
Sportsman Caucus Committee

Colorado State University Extension WHEP Program

(Environmental Sciences and Lifetime Physical Activities)

Hunting Knowledge Workshops

Turkey 101
Deer hunting 101
Upland Bird Hunting 101
Waterfowl Hunting 101
Elk Hunting 101
Marksmanship 101
BAI Training for teachers



Shooting Specialty Leadership Training (NSSF & NRA)

Nationals Instructorship

Archery, Shotgun, Air Rifle, 22 LR, Pistol, RSO, Outdoor Survival

Outdoor Skills Workshops

Wholesome Meat Handling Class

Leather craft Workshops

Shooting, climbing, outdoor skills

Marketing Classes

Shooting Competitions

4-H Shooting Sports in rifle, archery

Cowboy Shots

Archery – Field Target Competition

Archery – 3-D Target Competition

Crossbow – Field Target Competition

Black Powder Competitions

Pistol - Short Range / Long Range Competitions

Rifle – Short Range and Long Range Competitions

Trap Shooting Competitions

Skeet Shooting Competitions

Sporting Clays Competitions



Outdoor Educational Users (School District 51 and CPW)

Environmental Science, Outdoor Skills, and Hunter Safety are in the curriculum.

Teacher certifications, and training in progress. NRA, BAI, IHEA, TENS.

Instructor and Volunteer Processing (Background checks, Safety training: Red Cross First Aid and Emergency Response)

District 51 Summer School courses

Huntmaster Training / Hunter Safety Classes and Instructorship

Huntmaster Certification

Hunter Safety Classes

Hunter Safety for Teachers

New Instructor Academy

BLM EFF (Wildland Fire Training)

Basic Fire Fighting

Basic Fire Weather

Mesa County Public Safety Program



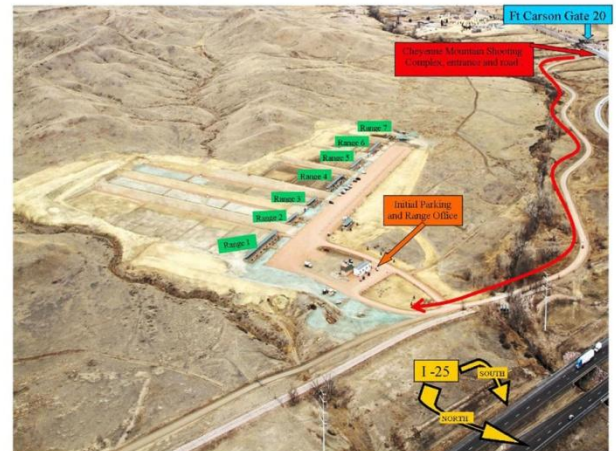
Other Colorado Efforts

Colorado Parks and Wildlife is dedicated to the creation of a facility of this type. This is not only demonstrated by the letters of support from the Director of Colorado Parks and Wildlife as well as the Executive Director of the Colorado Department of Natural Resources, but also through their other attempts to build a facility of this type, and of their support of shooting ranges in general.

Colorado Parks and Wildlife has committed to build two new ranges in each of its four regions in the coming years. CPW offers an annual \$500,000 range development grant to outside organizations interested in improving existing ranges or developing new ones, and has funded a dozen such projects to date.

In 2004, Bruce McCloskey, then director of the then Colorado Division of Wildlife, first put forward the idea of building a large scale shooting, education, and recreation complex in Colorado. The former Division of Wildlife worked with its then sister agency Colorado State Parks, local governments, private enterprise, and Great Outdoors Colorado to secure funding for the acquisition of land, and for design and construction of a large scale shooting and education complex. The Division of Wildlife had identified \$12 million dollars available for the construction of a shooting and education complex near the Denver Metro area. The Division of Wildlife had been awarded some of the funds when the ground shifted and the project encountered some local political opposition, which essentially ended that iteration of the project.

Colorado Parks and Wildlife remains committed to increasing access to shooting ranges generally, and to a large scale project in particular. Over the last three years Colorado Parks and Wildlife has worked with El Paso County, the El Paso County Sheriff's Office, the U.S. Forest Service, the U.S. Army, and the NRA to open the Cheyenne Mountain Shooting Complex. The Cheyenne Mountain Shooting Complex near Colorado Springs recently opened is now the largest public range in the state. Three phases of construction are planned, with only the first phase complete. Colorado Parks and Wildlife contributed \$200,000 towards the Phase I construction that had a total cost of \$750,000. CPW will also partner in the construction of the remaining two phases.



COLORADO PARKS & WILDLIFE

Shooting Range Development Grant Program

The announcement of program funding is normally made in November, with applications due at Area or Regional Colorado Parks and Wildlife offices by late January.

Examples of shooting range elements that are eligible for funding through the SRDG program include berms, sound baffles, shooting benches and covers, trap and skeet houses, walkways, signage, fencing and other capital items necessary to the operation of a shooting range.

Other grant requirements include:

- The shooting range must provide substantial public benefits, typically in the form of public access to the range. Hunter education and youth shooting opportunities are priorities for the program.
- Funds are provided on a reimbursement basis. No up-front funding is provided.
- Applicants must provide evidence that the range is or will be approved by the appropriate local government or land-owning agency.
- An Environmental Stewardship Plan must be developed before final funding is awarded.
- The proposed project must be completed within two years of grant award.
- Proposals requesting less than \$5000 should apply through Colorado Parks and Wildlife's Small Range Maintenance Grant Program.

Additional information and detail on the Shooting Range Development Grant Program can be found on the Hunting page of Colorado Parks and Wildlife's website at www.cpwildlife.state.co.us or by contacting Jim Guthrie, the SRDG program coordinator, at 303-291-7563 or jim.guthrie@state.co.us.

Colorado Parks and Wildlife's Shooting Range Development Grant Program provides matching grants to towns, counties, sportsmen and outdoor recreation organizations, shooting clubs, economic development agencies and others for projects to establish, improve or expand shooting ranges and shooting areas, including archery, across the state.

The Shooting Range Development Grant Program (SRDG) allocates up to \$500,000 annually in matching funds through a competitive grant process. To date, the SRDG Program has awarded funding to more than a dozen projects on the Eastern Plains, along the Front Range and on the Western Slope.

Funding for SRDG Program grants can come from a variety of sources, including Hunter Education and Wildlife Restoration Program funds from the US Fish and Wildlife Service, and Colorado Parks and Wildlife funds from license revenues. Project applicants must provide nonfederal matching funds, donated materials or volunteer labor to cover at least 25 percent of the project cost. Match in excess of the 25 percent minimum is encouraged to help a project be more competitive in the grant review and ranking process.

COLORADO PARKS & WILDLIFE • 6060 Broadway, Denver, CO 80216 • (303) 297-1192 • www.wildlife.state.co.us

Next Steps to Building the Cameo Sport Shooting Complex

What we have done:

- Colorado Park and Wildlife (CPW) has received direction and support from their Director as well as the Executive Director of the Department of Natural Resources to pursue the building of this shooting complex.
- CPW has held numerous meetings with stakeholders to gather support and input.
- The Town of Palisade (TOP) Board of Trustees has formally supported staff in pursuing this effort and the Palisade Tourism Advisory Board voted unanimously to support the effort.
- CPW and TOP have been getting specific letters of support (enclosed here-in) as well as surveys to test the community level of support.
- It is clear that the need is there, the desire is there, and the finance package can be put together as was evidenced in the Denver Metro Area.

What needs to happen now:

1. A site needs to be secured. Even if the site is not conveyed at this time we need to know the land is available and have contracts for future transfer.
2. CPW needs to fly-in some range design experts to evaluate the potential and get a rough layout of locations and stations based on available land, topography, environmental conditions and marketing.
3. Grants for facility design will be submitted and design work showing specific engineering and site work necessary.
4. Cost estimates and phasing options will be created
5. Construction fund raising will commence both from public and private sources
6. When Xcel Energy site work is completed, areas to remain in Xcel's ownership identified.
7. Subdivision and appropriate County Planning clearances are secured
8. Begin construction at the earliest possible date.

Resources and Reference Material

Wildlife Strategic Plan

<http://wildlife.state.co.us/SiteCollectionDocuments/DOW/AboutDow/2010-2020StrategicPlan.pdf>

Parks Strategic Plan

<http://www.parks.state.co.us/SiteCollectionImages/parks/Planning/Strategic%20Plan/Final%20Plan%20102810.pdf>

Wildlife Annual Reports

<http://wildlife.state.co.us/About/Reports/Pages/AnnualReportsHome.aspx>

Parks Annual Reports

<http://www.parks.state.co.us/About/Pages/annualreport.aspx>

Ben Avery Sport Shooting Complex, Phoenix, Arizona

http://www.azgfd.gov/outdoor_recreation/ben_avery.shtml

National Shooting Sports Foundation

www.nssf.org