



AGENDA
for the Planning Commission
of the Town of Palisade, Colorado
341 W. 7th Street (Palisade Civic Center)

April 18, 2023

6:00 pm Regular Meeting

<https://us06web.zoom.us/j/3320075780>

Meeting ID: 332 007 5780

- I. **REGULAR MEETING CALLED TO ORDER AT 6:00 pm**
- II. **PLEDGE OF ALLEGIANCE**
- III. **ROLL CALL**
- IV. **AGENDA ADOPTION**
- V. **ANNOUNCEMENTS**
 - A. **OPEN HOUSES FOR MESA TOGETHER (COUNTY COMPREHENSIVE PLAN)**
Thursday April 27 and Tuesday May 2 from 9:00 am to 7:00 pm in Room 40, Mesa County Central Services building, located at 200 S. Spruce Street in Grand Junction.
- VI. **APPROVAL OF MINUTES**
 - A. **Minutes from March 21, 2023, Regular Planning Commission Meeting**
- VII. **PUBLIC COMMENT – For items not on the Public Hearing agenda**
Please keep comments to 3 minutes or less and state your name and address. Neither the Planning Commissioners nor staff will respond to comments at this time. The Commission may direct staff to look into specific comments to bring back as an Agenda item at a future meeting.
 - A. **PUBLIC COMMENT REMINDER:**
All emails are to be sent to the Community Development Director at brusche@townofpalisade.org
Emails for public comment on a specific agenda item received prior to the day packets are published will be included with the staff report. Emails received after the packets are posted will be forwarded to the Planning Commission. Any member of the public who wishes to have a statement or email read into the Minutes is required to appear in-person at the meeting and make said statements to the Commission directly.
- VIII. **PLANNING COMMISSION REVIEW OF FUTURE PLAYGROUND EQUIPMENT OPTIONS AT VETERANS MEMORIAL PARK**
- IX. **FUTURE AGENDA ITEMS / CURRENT PLANNING TOPICS**
- X. **ADJOURNMENT**



**MINUTES OF THE REGULAR MEETING OF THE
PALISADE PLANNING COMMISSION
March 21, 2023**

The regular meeting of the Planning Commission for the Town of Palisade was called to order at 6:03 pm by Chair Amy Gekas, with Commissioners present: Riley Parker, David Hull, Brandon Burke, Don Bosch, and Vice Chair Leora Ruzin. Absent was Commissioner Ed Seymour. A quorum was declared. Also in attendance were Community Development Director Brian Rusche and Town Clerk Keli Frasier.

AGENDA ADOPTION

Motion #1 by Commissioner Hull, seconded by Commissioner Parker, to approve the agenda as presented.

A voice vote was requested
Motion carried unanimously

APPROVAL OF MINUTES

Motion #2 by Commissioner Hull, seconded by Vice-Chair Ruzin, to approve the Minutes from the March 7, 2023, regular meeting of the Palisade Planning Commission, as presented.

Motion carried unanimously.
Commissioner Bosch abstained from the vote due to his absence at the March 7, 2023, meeting.

APPOINT PLANNING COMMISSION CHAIRPERSON

Motion #3 by Commissioner Hull, seconded by Commissioner Bosch, to appoint Amy Gekas as Chairperson of the Palisade Planning Commission.

Chair Gekas accepted the nomination.

A roll call vote was requested.

Yes: Commissioner Bosch, Chair Gekas, Commissioner Burke, Vice-Chair Ruzin, Commissioner Hull, Commissioner Parker

No:

Absent: Commissioner Seymour

Motion carried.

APPOINT PLANNING COMMISSION VICE-CHAIRPERSON

Motion #4 by Commissioner Bosch, seconded by Commissioner Burke, to appoint Leora Ruzin as Vice-Chairperson of the Palisade Planning Commission.

Vice-Chair Ruzin accepted the nomination.

A roll call vote was requested.

Yes: Chair Gekas, Commissioner Burke, Vice-Chair Ruzin, Commissioner Hull, Commissioner Parker, Commissioner Bosch

No:

Absent: Commissioner Seymour

Motion carried.

PUBLIC COMMENT

None was offered.

PLANNING COMMISSION CODE OF ETHICS REVIEW

Community Development Director Brian Rusche reviewed the adopted Planning Commission Code of Ethics, parliamentary procedure, and ex parte communication.

Commissioners agreed that they would like training opportunities as well as a meet & greet/work session with the Board of Trustees.

FUTURE AGENDA ITEMS

- Land Development Code re-write and grant request update

ADJOURNMENT

Motion #5 by Vice-Chair Ruzin, seconded by Commissioner Bosch, to adjourn the meeting at 6:37 pm.

X

Amy Gekas
Planning Commission Chairperson

X

Keli Frasier
Town Clerk



PALISADE PLANNING COMMISSION Agenda Item Cover Sheet

Meeting Date: April 18, 2023

Presented By: Troy Ward, Parks & Facilities Director
Brian Rusche, Community Development Director

Re: Playground Equipment at Veterans Memorial Park

SUBJECT: Future Playground Equipment at Veterans Memorial Park

SUMMARY: Veterans Memorial Park has a children's playground on the west side of the park, adjacent to Kluge Avenue. The playground equipment is nearing the end of its useful life and is not compliant with today's standards for safety.

The Town has budgeted \$75,000 towards replacing the equipment, which includes funding from the Colorado Lottery as well as a Developer Fee in Lieu of Parks paid by the owners of the Winding River Mobile Home Park on W. 8th Street (one block west of the park).

The Town has solicited proposals for this equipment and received three (3) responses. Plans and drawings from these proposals are attached.

The Town would like to solicit feedback on these proposals prior to purchase.

GAME PLAN REFERENCE:

Chapter 4 – Recreation and Tourism (page 90 et. seq.)

- Strategy 4.2B – Provide additional infrastructure and education to enhance the connections between recreation, tourism, and residents (page 112)

Chapter 6 – Capital Projects List (page 141)

COMMISSION DIRECTION: Provide feedback to the Parks & Facilities Director on proposed options for playground equipment at Veterans Memorial Park.

A to Z Recreation



SPINNING

Spinning is not only fun but helps children develop necessary motor, social, sensory and cognitive skills. Kids will get a great workout, running, pushing and riding the Comet which incorporates climbing in addition to spinning to create a whole new challenge and experience!



PLAY VARIETY

This design offers the perfect solution for a great playspace and ensures that the necessary and age-appropriate play components are included. With various slides, climbers and spinning events, kids will be able to enhance physical fitness while having fun playing.



3D Designer: Kendra



CLIMBING

Climbing brings adventure and challenge to the playground while providing necessary developmental benefits such as balance, agility, upper and lower body strength and decision-making skills! When children climb, they develop confidence and take age appropriate risks that help build skills that will help them throughout their lives.



FORMIS™ CLIMBER

Engaging geometric shapes and unlimited climbing paths characterize the Formis™ collection of climbers. Named for the façade of a building and the distinctiveness each brings, Formis presents so many design options.



ACCESSIBLE REACH PANELS

Accessible Reach Panels allow children in wheelchairs to comfortably participate in multiple activities, while also developing fine motor skills.



COGNITIVE

So many life skills are learned through play! Skills such as cognitive planning, mastering new concepts, problem solving and expression are developed naturally through play events like climbing, sliding and spinning.





COLOR KEY

- SILVER
- GRAY
- ORANGE
- AQUA
- OLIVE
- REDWOOD
- GRAY/BLACK
- OLIVE/BLACK
- ORANGE/BLACK



FEATURED PLAY EVENTS



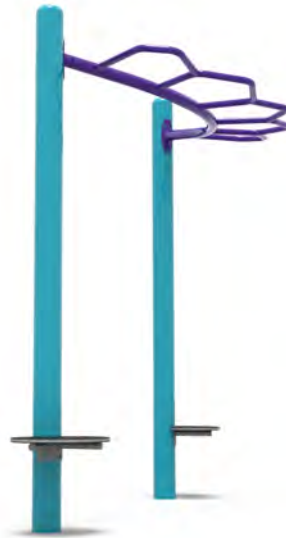
Extreme Twist Spiral Slide

The Extreme Twist is designed with a minimal footprint so there's more room for more play. Don't be fooled by the small footprint though, it's huge on fun and development. Sliding is an incredible way to enhance balance and coordination while developing turn taking and cooperation skills.



TWIST NET CLIMBER

A ground-to-deck climber that challenges children to climb at an angle while combining strength, balance and coordination. It also builds self confidence and increases flexibility.



90° Horizontal Ladder

Overhead Ladders offer so many opportunities for play and development within a playspace. These new overheads embody Burke's energetic design language, are loads of fun and promote upper body strength and teach resilience!

FEATURED PLAY EVENTS



PROPELLER RING PANEL

Create the perfect play area for children with Burke's Interactive Play Panels. The play panels encourage exploration, interaction and develop fine-motor skills for children with all abilities.



Pinball Panel

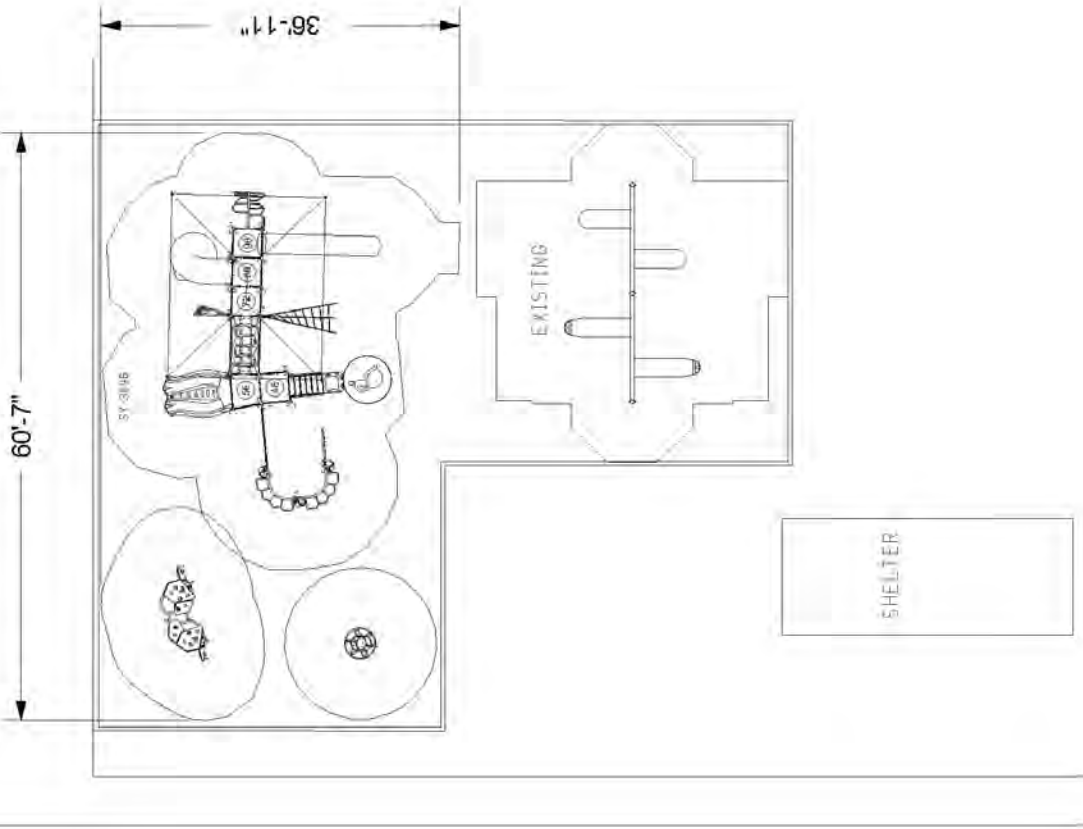
Interactive and fun, the Pinball Panel enhances cognitive development and fine motor skills while adding visual interest to your playsapce, outdoor classroom or anywhere you need more play.



COMET I

It challenges children to utilize their strength, balance and coordination. It can be used by a single child or by a group of children for maximum play ability. Children can sit or stand on the outside or inside of the comet.

PLAYGROUND AREA = 3440 SQ. FT.
 NOTE: ALTHOUGH ALL ATTEMPTS HAVE
 BEEN MADE TO PROVIDE AN ACCURATE SITE
 PLAN, THE DRAWING IS NOT TO BE USED
 WHERE THE STRUCTURE IS TO BE PLACED.



INFORMATION
 MINIMUM FALL ZONE
 SURFACED WITH
 RESILIENT MATERIAL
 AREA

1627 SQ.FT.

PERIMETER
 253 FT.

STRUCTURE SIZE
 36' 11" x 60' 7"

STRUCTURE IS DESIGNED
 FOR CHILDREN AGES:

- 6-23 MONTH OLDS
- 2-5 YEAR OLDS
- 5-12 YEAR OLDS
- 13 + YEAR OLDS



Registered
 to ISO 9001

Registered
 to ISO 14001



To verify product certification,
 visit www.ipema.org

The play components identified
 in this plan are IPEMA
 certified. The use and layout of
 these components conform to the
 requirements of ASTM F1487.
 To verify product certification,
 visit www.ipema.org

The space requirements shown
 here are to ASTM standards.
 Requirements for other standards
 may be different.

The use and layout of play
 components identified in this plan
 conform to the CPSC guidelines.
 U.S. CPSC recommends the
 separation of age groups in
 playground layouts.

WARNING!

ACCESSIBLE SAFETY SURFACING MATERIAL IS REQUIRED BENEATH
 AND AROUND THIS EQUIPMENT.
 FOR SLIDE FALL ZONE SURFACING AREA SEE CPSC's Handbook for
 Public Playground Safety.
 PLATFORM HEIGHTS ARE IN INCHES ABOVE RESILIENT MATERIAL.

ADA ACCESSIBILITY GUIDELINE (ADAAG CONFORMANCE)

NUMBER OF PLAY EVENTS:	17
NUMBER OF ELEVATED PLAY EVENTS:	11
NUMBER OF ELEVATED PLAY EVENTS ACCESSIBLE BY RAMP:	PROVIDED: 0
NUMBER OF ELEVATED PLAY EVENTS ACCESSIBLE BY TRANSFER SYSTEM:	PROVIDED: 8
NUMBER OF ELEVATED PLAY EVENTS ACCESSIBLE BY RAMP OR TRANSFER SYSTEM:	PROVIDED: 6
NUMBER OF GROUND LEVEL PLAY EVENTS:	PROVIDED: 6
NUMBER OF TYPES OF GROUND LEVEL PLAY EVENTS:	PROVIDED: 5
RECD: 0	RECD: 0
RECD: 8	RECD: 6
RECD: 6	RECD: 4
RECD: 5	RECD: 3

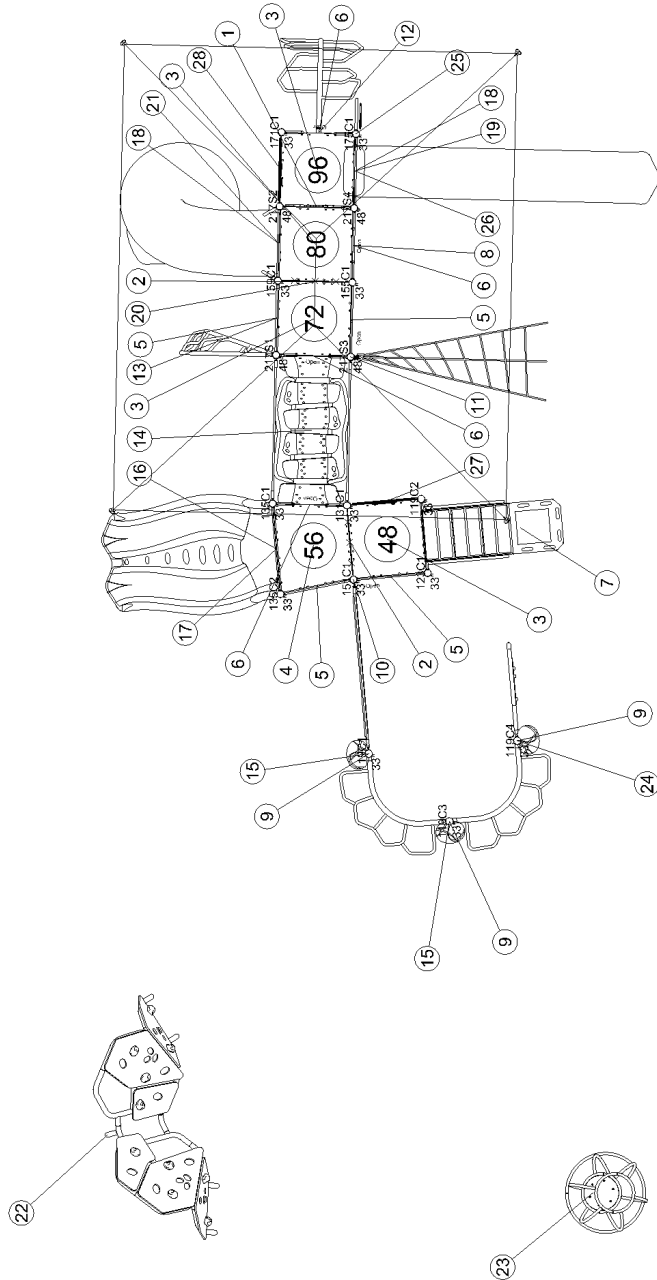


SERIES: Basics, Synergy
 SITE PLAN
 DRAWN BY: Kay Garcia

Palisade Veteran's Memorial Park
 120 W 8th St
 Palisade, CO 81526

April 04, 2023
 AtoZ Recreation
 136-157220-2

ITEM	COMP.	DESCRIPTION
1	290-0100	16" TRANSITION CLIMBER
2	290-0101	8" CLOSURE PLATE
3	290-0102	SQUARE PLATFORM
4	290-0103	TRAPEZOID PLATFORM
5	290-0104	OFFSET ENCLOSURE
6	290-0110	CLIMBER ENCLOSURE
7	390-0149	TRANSFER STATION, HANDRAIL
8	390-0160	TREE BRANCH CLIMBER 80"
9	390-0225	SYNERGY LAUNCH PAD
10	390-0227	TRANGO CLIMBER, POST TO PC
11	390-0243	TWIST NET CLIMBER
12	390-0263	VERVE CLIMBER 96" DK
13	390-0291	VIA CLIMBER 64"-72"
14	390-0298	MESA CLIMBER
15	390-0305	90 DEG HORIZONTAL LADDER,S
16	490-0137	LUGE SLIDE 48"-56"
17	490-0138	DOUBLE SLIDE SIT DOWN BAR
18	490-0141	SLIDE SIT DOWN BAR
19	490-0143	VELO XL SLIDE 88"-96"
20	490-0192	EZ TENSION 15' X 19' SHADEPLA
21	490-0231	EXTREME TWIST SPIRAL SLIDE
22	560-0062	FORMIS FREE 2-12
23	560-2586	COMET I
24	590-0107	PROPELLER RING PANEL
25	590-0140	SPINNER CRESCENT PANEL
26	590-0409	SYNERGY COUNTER BELOW PL
27	590-0430	PISTON PANEL
28	590-0431	PINBALL PANEL



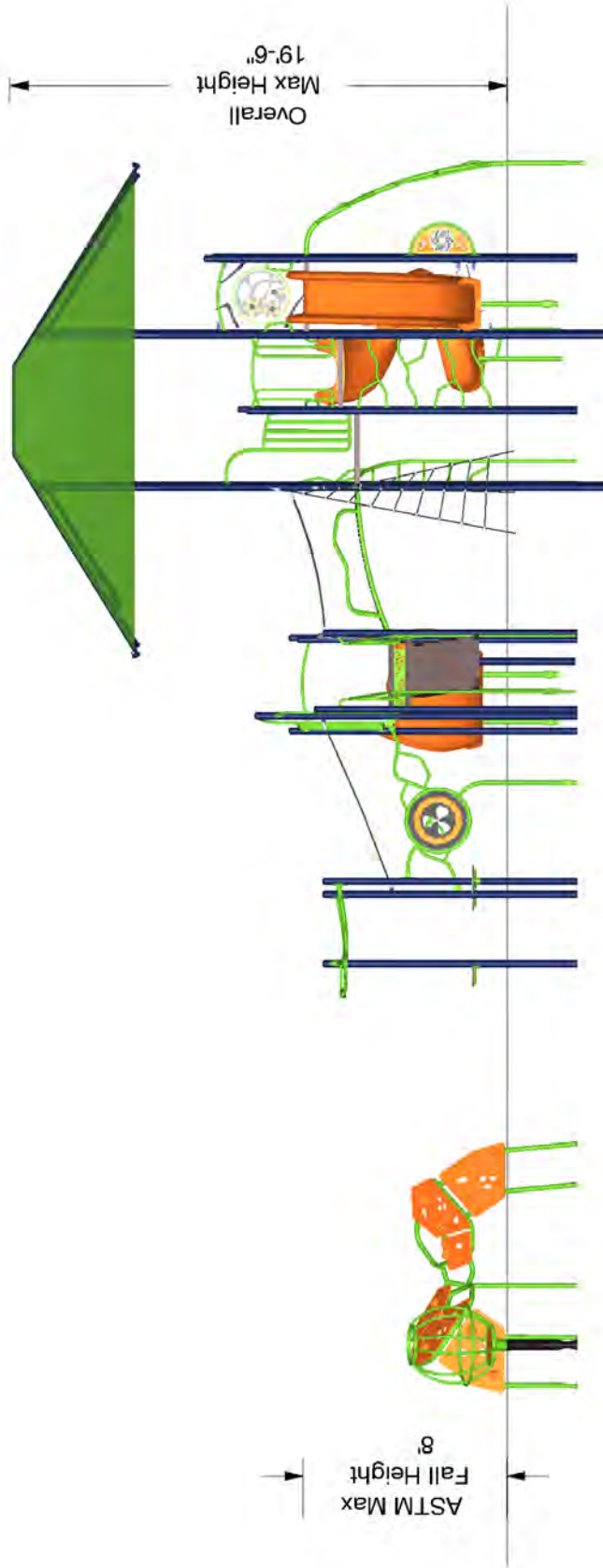
Burke

SERIES: Basics, Synergy
 COMPONENT PLAN
 DRAWN BY: Kay Garcia

Palisade Veteran's Memorial Park
 120 W 8th St
 Palisade, CO 81526

April 04, 2023

AtoZ Recreation
 136-157220-2



The protective surfacing for this design must accommodate the critical fall height.

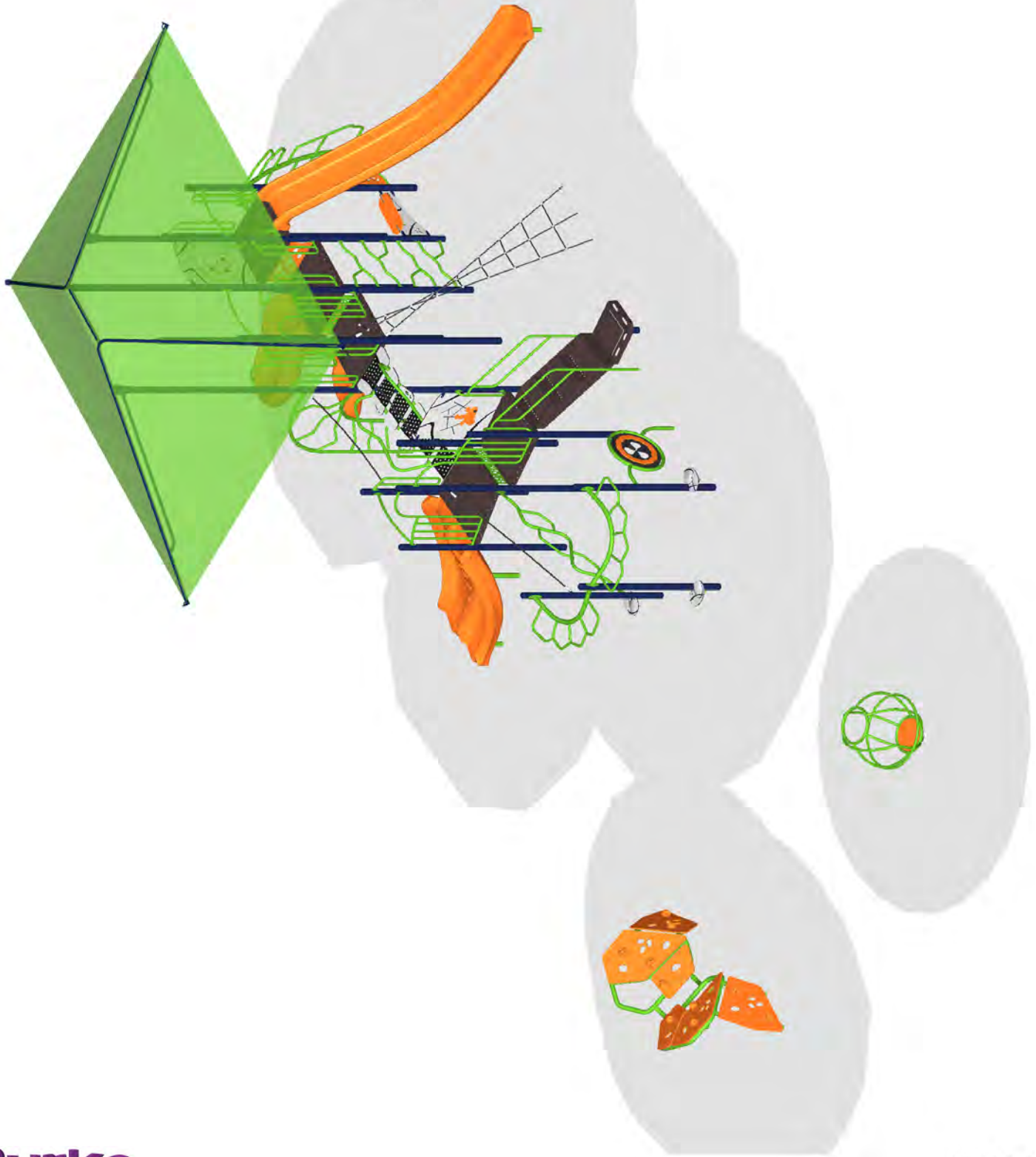


SERIES: Basics, Synergy
 ELEVATION PLAN
 DRAWN BY: Kay Garcia

Palisade Veteran's Memorial Park
 120 W 8th St
 Palisade, CO 81526

April 04, 2023

AtoZ Recreation
 136-157220-2



Burke

April 04, 2023

SERIES: Basics, Synergy
ISOMETRIC PLAN
DRAWN BY: Kay Garcia

Palisade Veteran's Memorial Park
120 W 8th St
Palisade, CO 81526

AtoZ Recreation
136-157220-2

BCI Burke Company, LLC PO Box 549 Fond du Lac, Wisconsin 54936-0549 Telephone 920-921-9220

Altitude Recreation

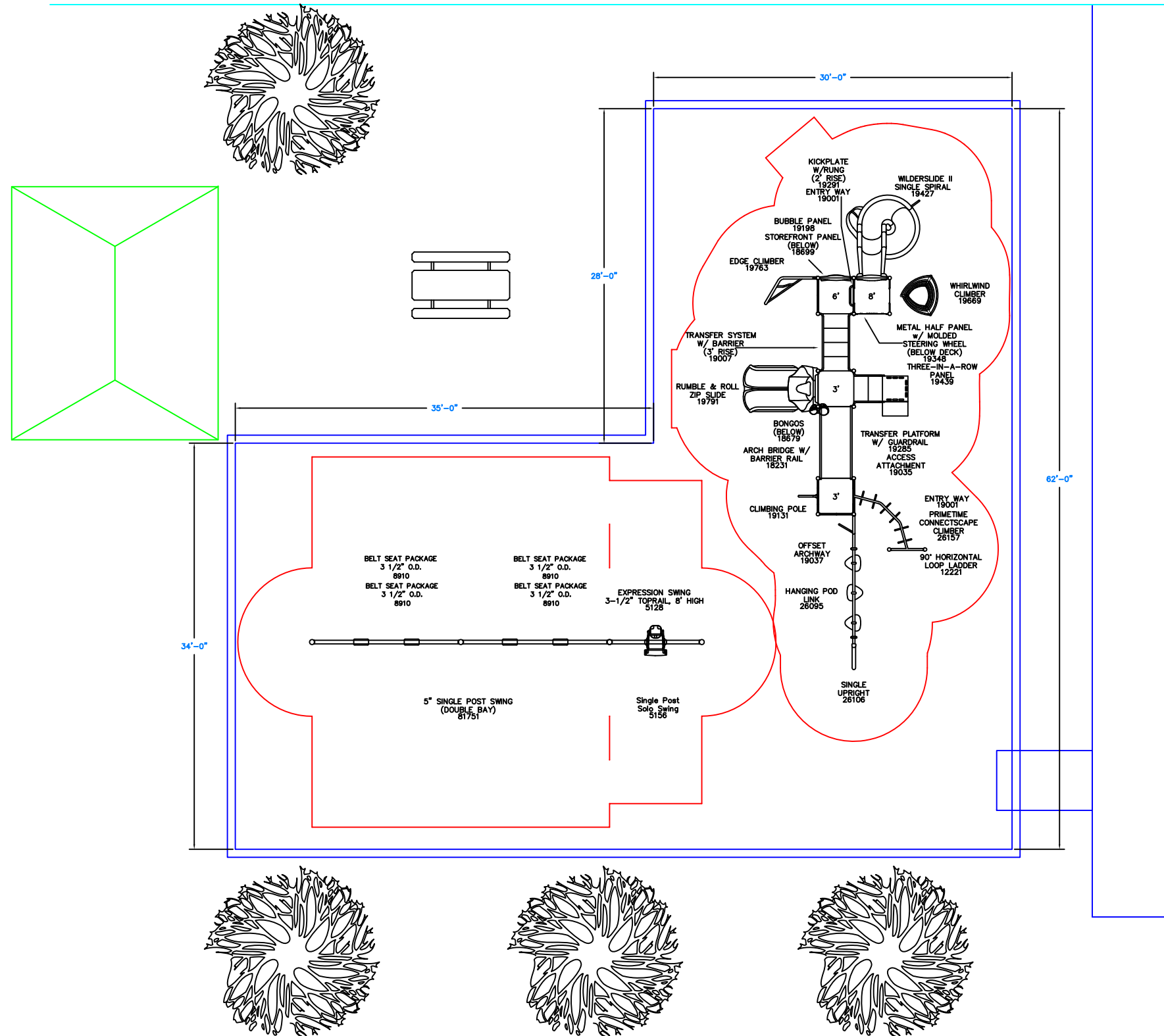
Proposal for

04-03-2023
Job # 102982-01

VETERANS MEMORIAL PARK



1-800-235-2440 | gametime.com



150 PlayCore Drive SE
Fort Payne, AL 35967
www.gametime.com

VETERANS MEMORIAL PARK
OPTION 1

Representative
ALTITUDE RECREATION

This Unit includes play events and routes or travel specifically designed for special needs users. It is the opinion of the manufacturer that these play events and routes of travel conform to the accessibility requirements of the ADA (Americans with Disabilities Act)

Total Elevated Play Components	
Total Elevated Play Components Accessible By Ramp	Required
Total Elevated Components Accessible By Transfer	Required
Total Accessible Ground Level Components Shown	Required
Total Different Types Of Ground Level Components	Required

This play equipment is recommended for children ages
5-12

Minimum Area Required:
Scale:
This drawing can be scaled only when in an 24" x 36" format

IMPORTANT: Soft resilient surfacing should be placed in the use zones of all equipment, as specified for each type of equipment, and at depths to meet the critical fall heights as specified by the U.S. consumer Product Safety Commission, ASTM standard F 1487 and Canadian Standard CAN/CSA-Z-614

Drawn By:
Date:
Drawing Name:



Intellectual property of GameTime, a PlayCore Company. The site shown in rendering is an interpretation and may not reflect exact site conditions.



www.gametime.com

Veteran's Memorial Park





Intellectual property of GameTime, a PlayCore Company. The site shown in rendering is an interpretation and may not reflect exact site conditions.



www.gametime.com

Veteran's Memorial Park



PlayWell

Since 1988

PlayWell

Athletic, Park, and Playground Equipment

Arkansas | Colorado | Oklahoma | New Mexico | Texas

Inclusive
Playground Designs



203A State Highway 46 East, Boerne, TX 78006
(972) 488-9355 or (800) 726-1816 | Fax (800) 560-9150

www.playwellgroup.com

Veteran's Park

SITE PLAN

ADA ACCESSIBILITY GUIDELINES - ADAAG CONFORMANCE

ELEVATED	ACCESSIBLE	RAMP ACCESSIBLE	GROUND	TYPES
5	5/3	0/0	7/2	4/2

Mixed
Types

FOR KIDS
AGES
5-12



GENERAL NOTES

This Preliminary Site Plan is based on measurements that were provided in the initial planning phase. All dimensions must be verified prior to the submission of a purchase order. Playcraft Systems will not be held responsible for any discrepancies between actual dimensions and dimensions submitted in the planning phase.

The Minimum Use Zone for a play structure is based on the product design at the time of proposal. Components and structure designs may be subject to change which may affect dimensions. Therefore, before preparing the site, we strongly recommend obtaining final drawings from the factory (available after the order is placed and included in the Assembly Manual).

WARNING: Accessible safety surfacing material is required beneath and around this equipment that has a critical height value (Fall Height) appropriate for the highest accessible part of this equipment. Refer to the CPSC'S Handbook For Public Playground Safety, Section 4: Surfacing.

PROJECT # R3546591A
DATE 4/4/2023

The PlayWell Group, Inc.
MIN. USE ZONE 49' x 58'



Veteran's Park
TOP VIEW

ADA ACCESSIBILITY GUIDELINES - ADAAG CONFORMANCE

ELEVATED	ACCESSIBLE	RAMP ACCESSIBLE	GROUND	TYPES
5	5/3	0/0	3/2	1/2
CHILD CAPACITY 41		MAX FALL HEIGHT 84		

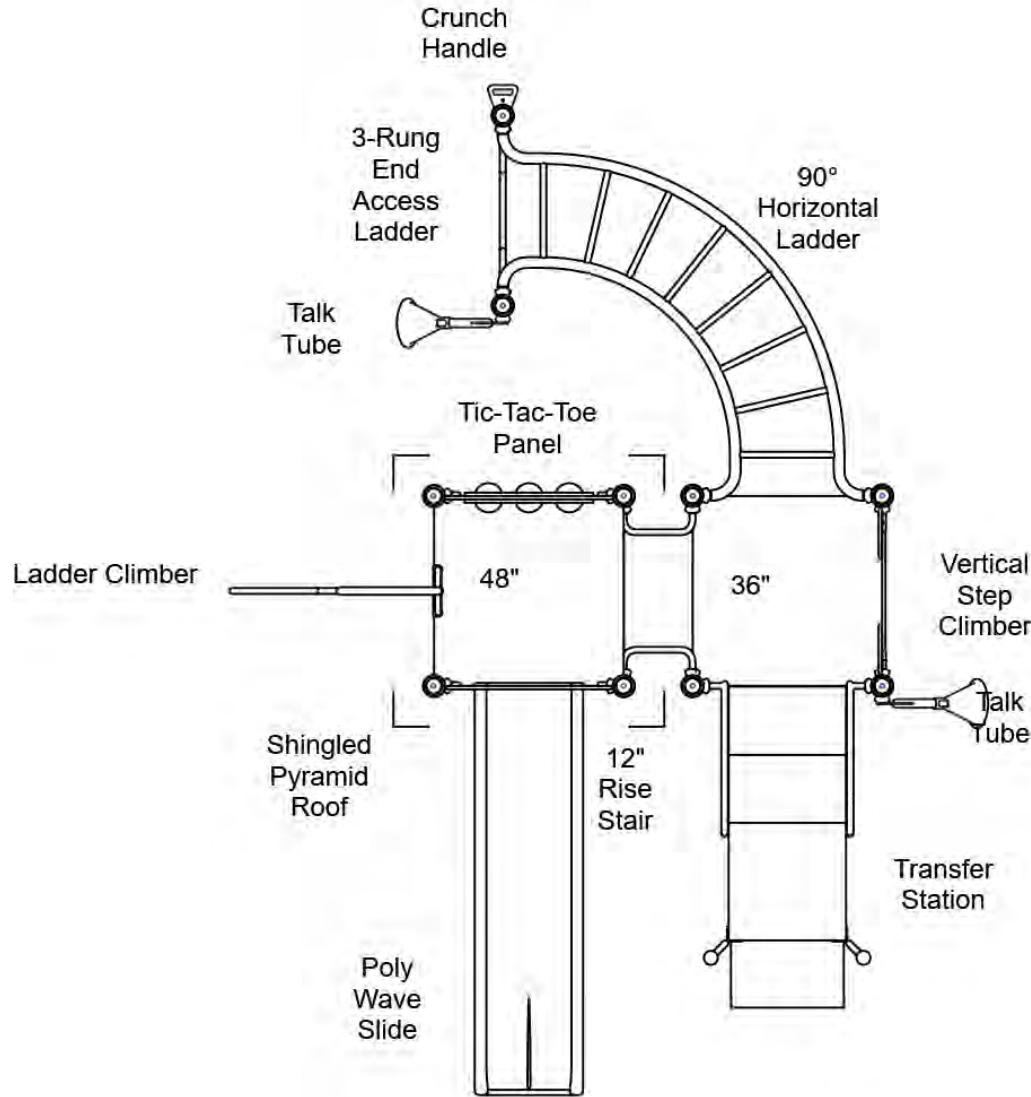
R35

FOR KIDS
AGES
5-12

GENERAL NOTES

This conceptual plan is based on information provided prior to construction. Detailed site information, including the following, should be obtained, evaluated, and utilized in the final project design. Exact site dimensions, topography, existing utilities, soil conditions and drainage solutions.

WARNING: Accessible safety surfacing material is required beneath and around this equipment that has a critical height value (Fall Height) appropriate for the highest accessible part of this equipment. Refer to the CPSC'S Handbook For Public Playground Safety, Section 4: Surfacing.



STRUCTURE # R3546591A
PROJECT # R3546591A
DATE 4/4/2023

The PlayWell Group, Inc.

MIN. USE ZONE 25' x 31'



Veteran's Park
SW VIEW

R35

FOR KIDS
AGES
5-12



STRUCTURE # R3546591A
PROJECT # R3546591A
DATE 4/4/2023



Veteran's Park
SE VIEW

R35

FOR KIDS
AGES
5-12



STRUCTURE # R3546591A
PROJECT # R3546591A
DATE 4/4/2023



Veteran's Park
NE VIEW

R35

FOR KIDS
AGES
5-12



STRUCTURE # R3546591A
PROJECT # R3546591A
DATE 4/4/2023



Veteran's Park
NW VIEW

R35

FOR KIDS
AGES
5-12



STRUCTURE # R3546591A
PROJECT # R3546591A
DATE 4/4/2023



Veteran's Park
SW VIEW

FOR KIDS
AGES
5-12



STRUCTURE # aa
PROJECT # R3546591A
DATE 4/4/2023



Veteran's Park
SW VIEW

FOR KIDS
AGES
5-12



STRUCTURE # aa
PROJECT # R3546591A
DATE 4/4/2023